

21501300000

I, Gary L. Dechant, do hereby certify that on the 16th day of November 1998, I found (evidence) (~~no evidence~~) of the SE corner of Section 30, T15 N, R1 W Fourth Principal Meridian, and I re-established said corner according to the Wisconsin Statutes as shown and described hereon.

History of corner establishment since Original Government Survey

Hamilton LaRue was here in 1897 as recorded in Vol. 1 P. 107 of Monroe County Survey Records.

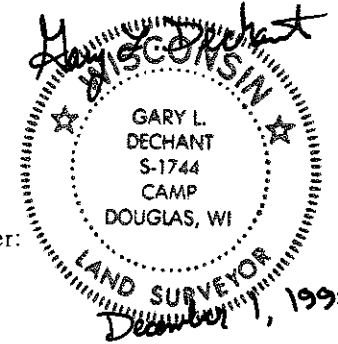
Description of corner evidence found:

Found remains of bearing tree stump of Hamilton LaRue's survey of 1897. "S. Maple 12 N70E, 79" reset corner from rotted maple stump. Fits occupied conditions very well.

Dated this 1st day of Dec. 1998.

Gary L. Dechant

R.L.S. 1744  
Title

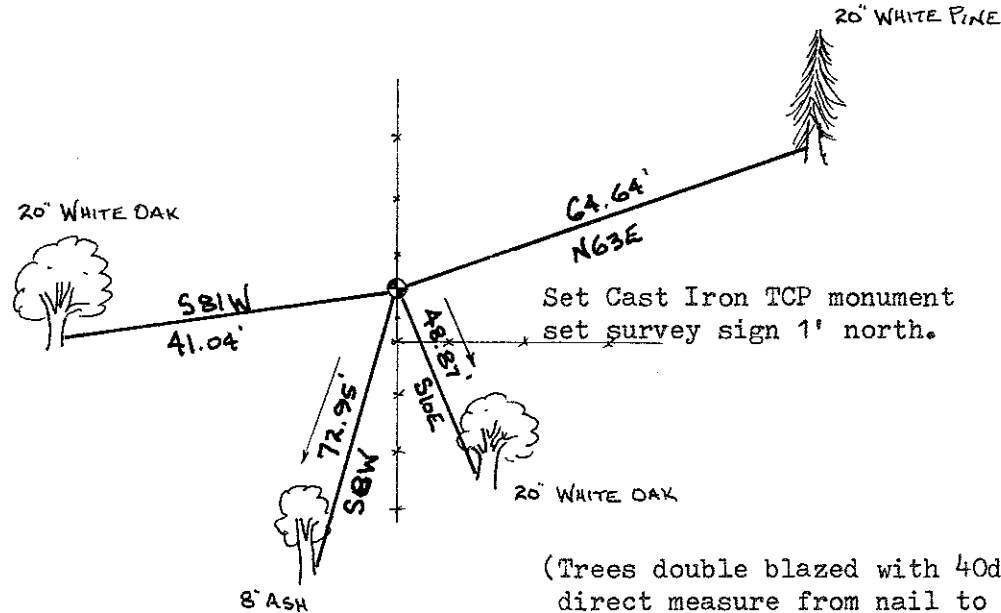
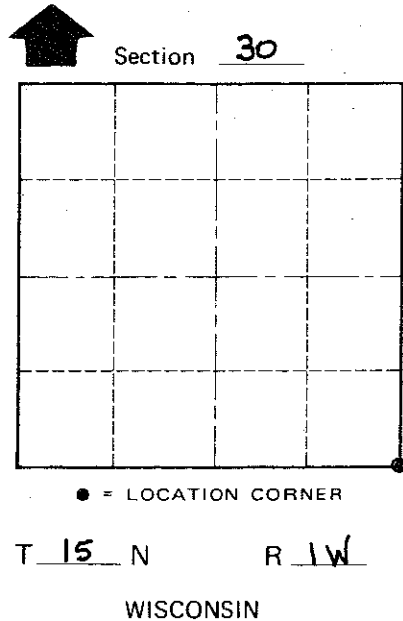


Description of corner and witness monuments, references and accessories used to perpetuate the original or re-established location of this corner:

Witnesses to corner location:

David E. Madison

Gary L. Dechant



(Trees double blazed with 40d nail set, arrow indicates direct measure from nail to monument, slope measure.)

SURVEY CONTROL ORDER

Horizontal	_____
Vertical	_____

WISCONSIN COORDINATE SYSTEM

Corner	East (X)	North (Y)	Elevation (Z)	Zone
Control Sta. Name				

City, Village or Town WELLINGTON  
County of MONROE

COUNTY SURVEYOR FORM NO. 1