

21501292000

I, William C. Jung, do hereby certify that on the 8th day of April 19 83, I found (evidence) ~~(no evidence)~~ of the West 1/4 corner of Section 28, T 15 N, R 1 W Fourth Principal Meridian, and I re-established said corner according to the Wisconsin Statutes as shown and described hereon.

Dated this 1st day of March 19 84.

William C. Jung
Deputy County Surveyor, R.L.S. 1323

History of corner establishment since Original Government Survey
In his notes of May, 1906, Fred Holden calls for a stone at the original corner. Kenyon (or Schroeder?) was at this corner in October of 1890 and December of 1891. The 1891 notes call for a stone at the corner. An old 1873 cemetery deed in Vol.30, Page 291, calls for the Southwest corner of the cemetery being 33 feet North of the 1/4 corner.

Description of corner evidence found:

I measured up the fences around the old cemetery and found that the cemetery fits the 1873 description fairly well, especially North-South. I then measured 33 feet South from an old corner post at the Southwest corner of the cemetery and set the corner on line with the old line fences going North and South. This corner falls 2 feet South of the centerline and fits the overall section data very well. I dug a 2'x2' hole and probed but found no stone. The road appears to have been cut a lot and then brought back to grade. I also could not find any witness trees or Holden's grate bar or bricks. Calvin Day deeded the land for cemetery purposes in 1873. If Calvin knew where the original was at the East 1/4 of Section 28, then he probably knew where the (continued on back)

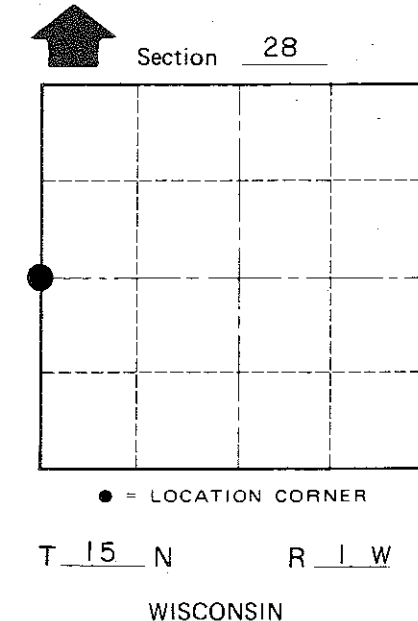
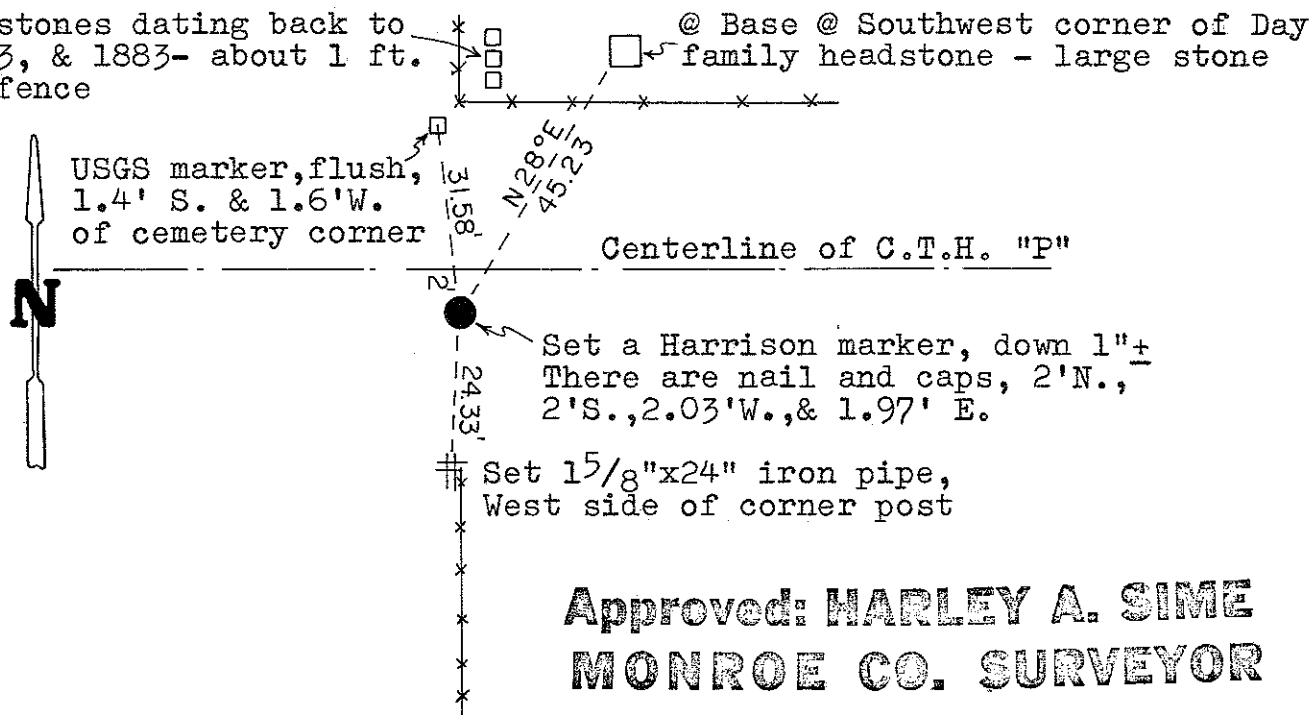
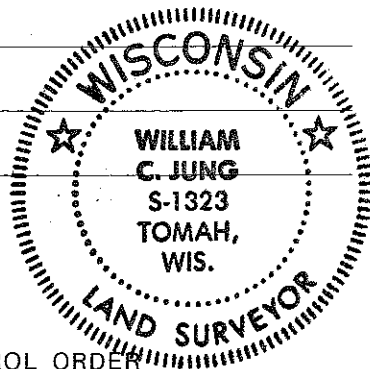
Description of corner and witness monuments, references and accessories used to perpetuate the original or re-established location of this corner:

(3) Day stones dating back to 1869, 1873, & 1883- about 1 ft. East of fence
@ Base @ Southwest corner of Day family headstone - large stone

Witnesses to corner location:

William Jung

Dallas Wilhite



Approved: **HARLEY A. SIME**
MONROE CO. SURVEYOR

SURVEY CONTROL ORDER

Horizontal	_____
Vertical	_____

WISCONSIN COORDINATE SYSTEM

Corner	East (X)	North (Y)	Elevation (Z)	Zone
Control Sta. Name				

City, Village or Town of Wellington
County of Monroe
Wisconsin

COUNTY SURVEYOR FORM NO. 1

(continued)

original was at the West 1/4 of Section 28 in 1873. In 1906 he and Whiting pointed out the original at the East 1/4 to Holden. There are three Day headstones dating back to 1869, 1873, and 1883, and all of these stones are only 1 foot East of the line fence. One would certainly think that Day would have buried his family members on his own land and that he would have known where the line and 1/4 corner were in 1869 and 1873. I feel that my corner location is correct and that the stone was probably knocked out during road construction.