

CERTIFICATE

CERTIFIED LAND CORNER

No. 963

21501282020

I, William C. Jung, do hereby certify that on the 19th day of September 1978, I found (evidence) (~~no evidence~~) of the 0% corner of Section 28, T 15 N, R 1 W Fourth Principal Meridian, and I re-established said corner according to the Wisconsin Statutes as shown and described hereon.

History of original corner establishment:

Fred Holden set a sleigh shoe here in May of 1906.

Description of corner evidence found:

Found an iron monument which I assume is Holden's sleigh shoe.

Dated this 5th day of Jan. 1979.

William C. Jung, R.L.S. 1323

Crew Chief, County Surveyor's
Title Office

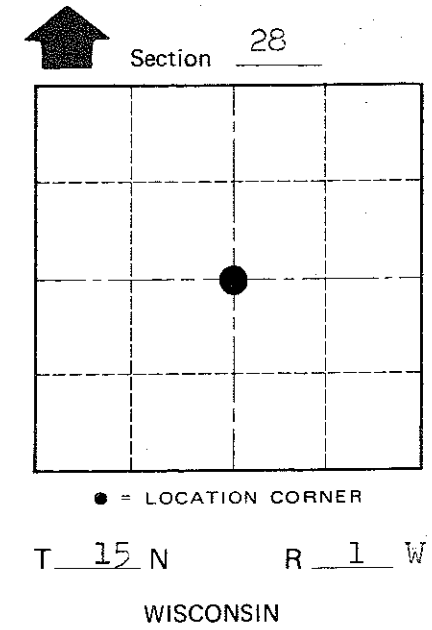
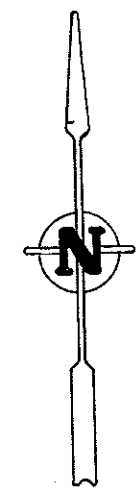
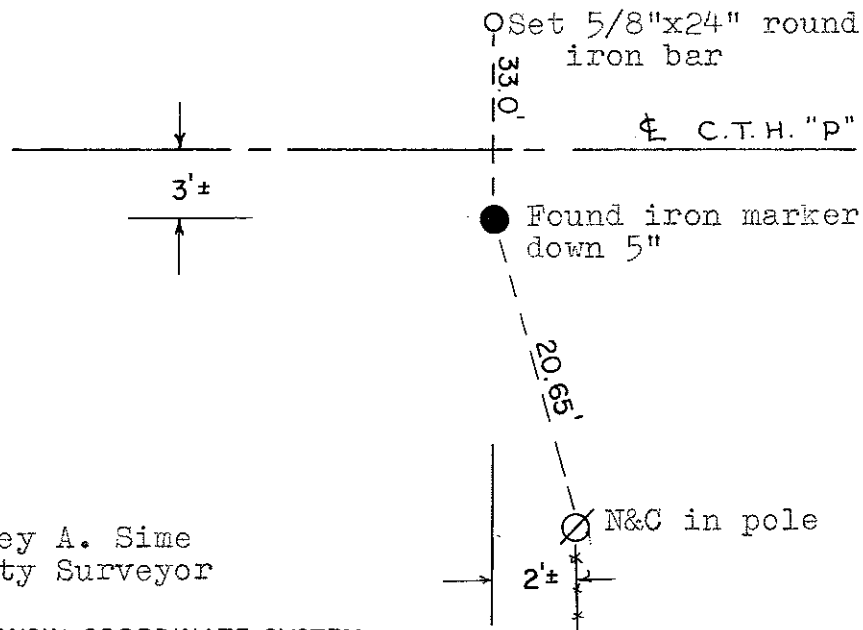
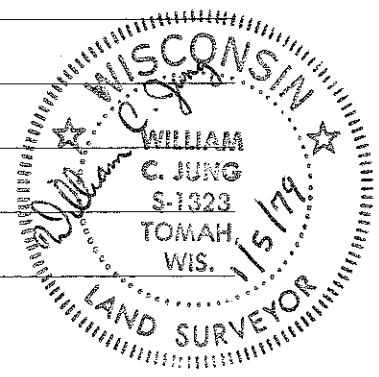
COUNTY SURVEYOR FORM NO. 1

Description of corner and witness monuments, references and accessories used to perpetuate the original or re-established location of this corner:

Witnesses to corner location:

W. Jung

R. Lamb



SURVEY CONTROL ORDER

Horizontal	_____
Vertical	_____

Approved by: Harley A. Sime
County Surveyor

WISCONSIN COORDINATE SYSTEM

Corner	East (X)	North (Y)	Elevation (Z)	Zone
Control Sta. Name				

City, Village or Town Wellington
County of Monroe