

21501282000

I, William C. Jung, do hereby certify that on the 8th day of April 1983, I found (evidence) ~~(no evidence)~~ of the East 1/4 corner of Section 28, T 15 N, R 1 W Fourth Principal Meridian, and I re-established said corner according to the Wisconsin Statutes as shown and described hereon.

Dated this 21st day of Dec. 1983.

William C. Jung

Deputy County Surveyor, R.L.S. 1323

Title

History of corner establishment since Original Government Survey

A.S. Ingalls was at this corner in March of 1873. Fred Holden was at this corner in November and December of 1901. Holden was again at this corner in May of 1906 and calls for the original corner.

Description of corner evidence found:

I re-established the West 1/4 Corner of Section 28 and again found Holden's monument at the Center 1/4 of Section 28. I then took the bearing between the latter two corners and intersected it with the fence going North from the E1/4 Corner of Section 28 and set the East 1/4 at this location. After setting the East 1/4 and NE of Section 28, I found that the fence corner at the E1/16NE fits within 2' North-South of the final forty corner location.

Description of corner and witness monuments, references and accessories used to perpetuate the original or re-established location of this corner:

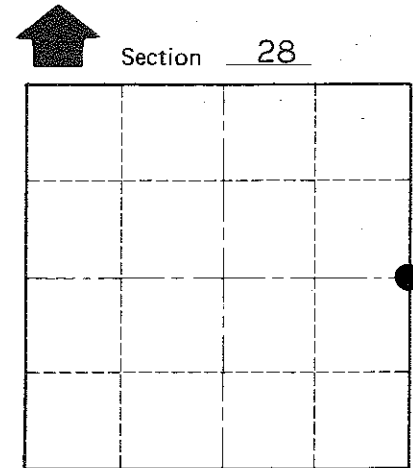
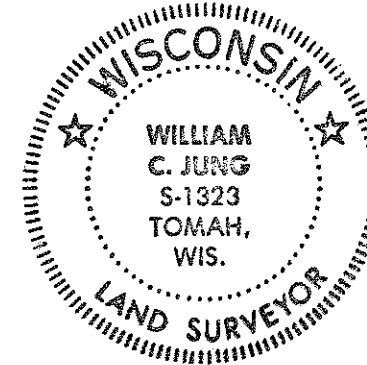
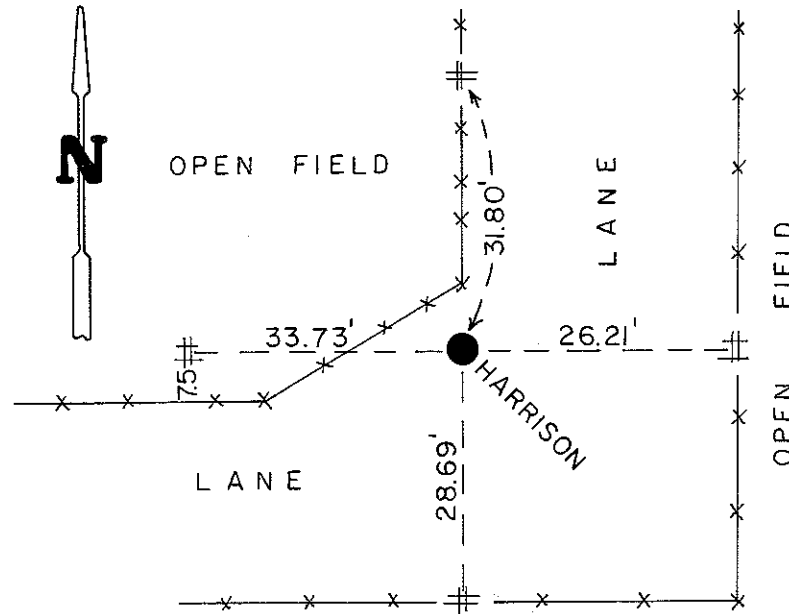
Set a Harrison marker, flush, and 5.27 feet South of an "eye bolt" which I set.

Witnesses to corner location:

William C. Jung

Dallas Wilhite

COUNTY SURVEYOR FORM NO. 1



• = LOCATION CORNER
T 15 N R 1 W
WISCONSIN

Approved: **HARLEY A. SIME**
MONROE CO. SURVEYOR

SURVEY CONTROL ORDER

Horizontal	_____
Vertical	_____

= Set 3/4"x24" round iron bar

WISCONSIN COORDINATE SYSTEM

Corner	East (X)	North (Y)	Elevation (Z)	Zone
Control Sta. Name				

~~City, Village~~ or Town of Wellington
County of Monroe
Wisconsin