

CERTIFICATE

CERTIFIED LAND CORNER

No. 98

21501272000

I, Gary L. Dechant, do hereby certify that on the 2nd day of July 2004, I found (evidence) ~~(no evidence)~~ of the E¹/₄ corner of Sec. 27, T 15 N, R 1 W Fourth Principal Meridian, and I re-established said corner according to the Wisconsin Statutes as shown and described hereon.

History of corner establishment since Original Government Survey

Frad Holden was here in the early 1900's.

Description of corner evidence found:

Found Heldens bearing tree, now a rotted stump, 7" Sugar N83W, 23. Reset corner from stump at his recorded bearing and distance. Falls 3' north and 3' west of corner post. Fits other corners very well.

Dated this 27th day of Aug. 2004.

Gary L. Dechant
Title

RLS 1744

Title

Description of corner and witness monuments, references and accessories used to perpetuate the original or re-established location of this corner:

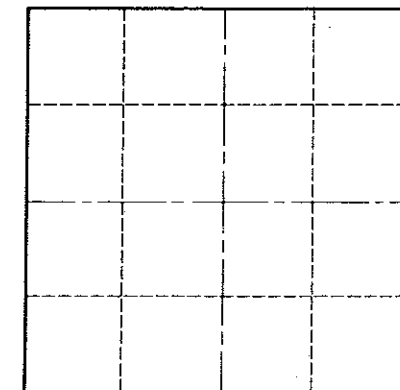
Witnesses to corner location:

Zachariah P. Dechant

Gary L. Dechant



Section 27

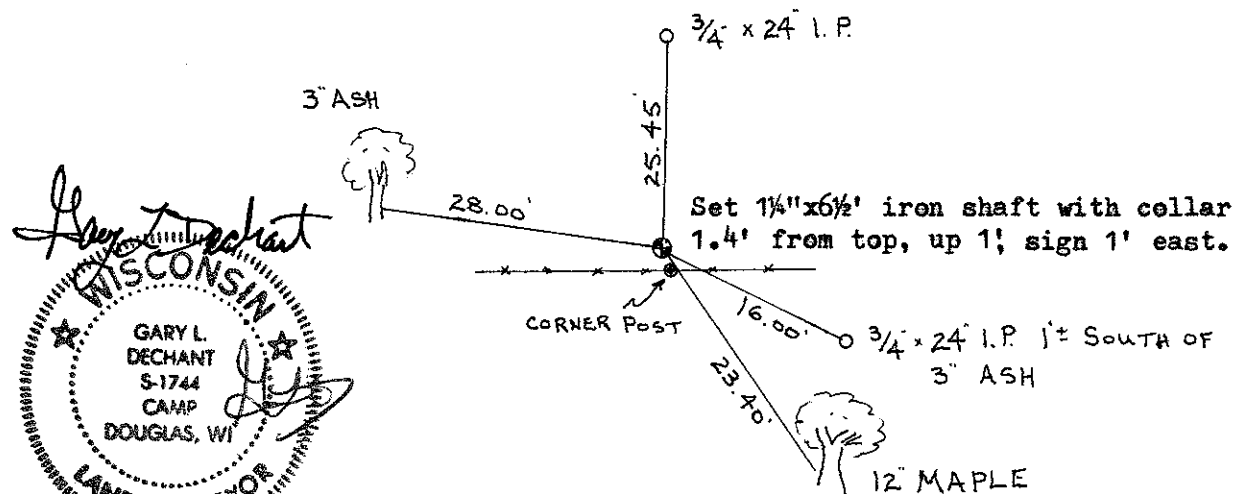


O = LOCATION CORNER

T 15 N R 1 W

WISCONSIN

Trees double blazed with 40d nail set.



Gary L. Dechant
GARY L. DECHANT
S-1744
CAMP
DOUGLAS, WI
LAND SURVEYOR
August 30, 2004

WISCONSIN COORDINATE SYSTEM

SURVEY CONTROL ORDER

Horizontal	_____
Vertical	_____

Corner	East (X)	North (Y)	Elevation (Z)	Zone
Control Sta. Name				

~~City, Village or~~ Town WELLINGTON

County of MONROE

COUNTY SURVEYOR FORM NO. 1