

CERTIFICATE

CERTIFIED LAND CORNER

No. 106

21501270020

I, Gary L. Dechant, do hereby certify that on the 2nd day of July 2004, I found ~~(evidence)~~ (no evidence) of the SE¹/₄ corner of Sec. 27, T 15 N, R 1 W Fourth Principal Meridian, and I re-established said corner according to the Wisconsin Statutes as shown and described hereon.

Dated this 27th day of Aug. 2004.

Gary L. Dechant

RLS 1744

Title

History of corner establishment since Original Government Survey

Fred Holden was here in the early 1900's.

Description of corner evidence found:

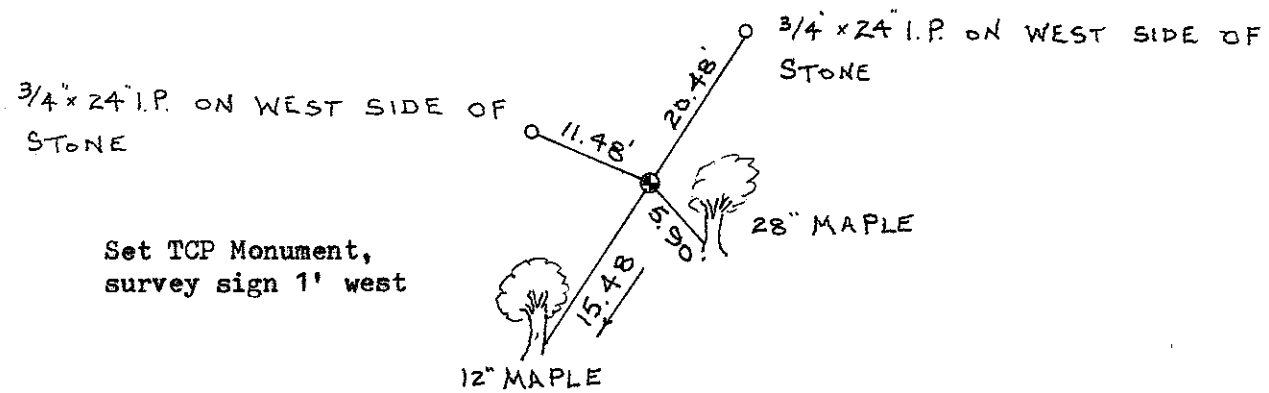
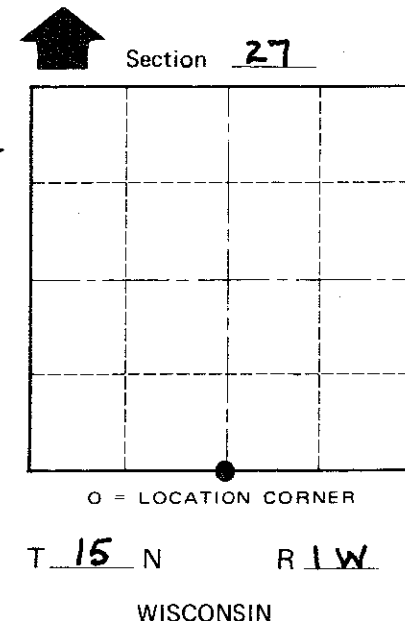
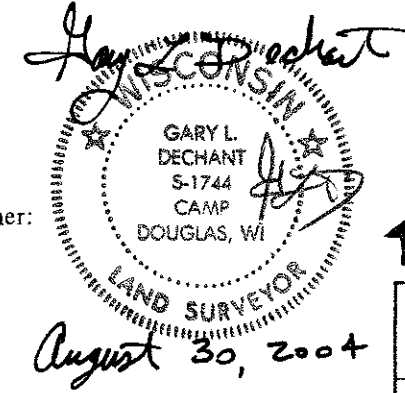
Set corner on line and doubled distance between SE corner of Section 27 and the existing iron pipe at the SW corner of the SE¹/₄-SE¹/₄. It appears the original government survey dropped a chain on the south line of the SE¹/₄.

Description of corner and witness monuments, references and accessories used to perpetuate the original or re-established location of this corner:

Witnesses to corner location:

Zachariah P. Dechant

Gary L. Dechant



Set TCP Monument, survey sign 1' west

Trees double blazed with 40d nail set.

COUNTY SURVEYOR FORM NO. 1

SURVEY CONTROL ORDER

Horizontal _____
Vertical _____

WISCONSIN COORDINATE SYSTEM

Corner	East (X)	North (Y)	Elevation (Z)	Zone
Control Sta. Name				

City, Village or Town WELLINGTON
County of MONROE