

21501262000

I, William C. Jung, do hereby certify that on the 11th day of May 1983, I found (evidence) ~~(no evidence)~~ of the West 1/4 corner of Section 25, T 15 N, R 1 W Fourth Principal Meridian, and I re-established said corner according to the Wisconsin Statutes as shown and described hereon.

Dated this 12th day of May 1983.

William C. Jung  
Deputy County Surveyor, R.L.S. 1323  
Title

History of corner establishment since Original Government Survey

Fred Holden was at this corner in April of 1901.

Approved: **HARLEY A. SIME**  
**MONROE CO. SURVEYOR**

Description of corner evidence found:

I could not find Holden's or the original bearing trees. At the W1/16SW corner I did find Holden's butternut. After measuring off this tree using the recorded bearing and distance I found that I fit the occupied "forty corner". I also measured to the occupied corner at the W1/16NW corner (two tie posts in a North-South fence) and found this point to be on line with the NW and SW section corners. Therefore, I set the corner on line with the NW and SW section corners, and at a distance from the W1/16SW equal to the distance between the W1/16SW and SW corners. The corner as set is on line with the fences going to the North and East. This makes the West line of the NW1/4 over 56' longer than the West line of the SW1/4, but the field evidence would indicate that this is just the way it is. My final corner at the W1/16NW is only 3.6' South of the occupied corner. Also, if you split Holden's distance along the West line of the section, I match Holden's distance along the West line of the NW1/4 within about 3.5'±. I also took a shot in the North-South fence at a location of 535' North of the 1/4 corner, and found the fence to be only about 1.8'± off line.

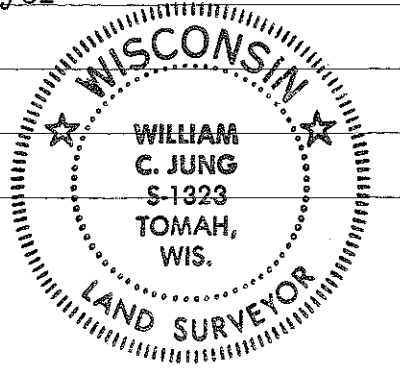
Description of corner and witness monuments, references and accessories used to perpetuate the original or re-established location of this corner:

of the NW1/4 within about 3.5'±. I also took a shot in the North-South fence at a location of 535' North of the 1/4 corner, and found the fence to be only about 1.8'± off line.

Witnesses to corner location:

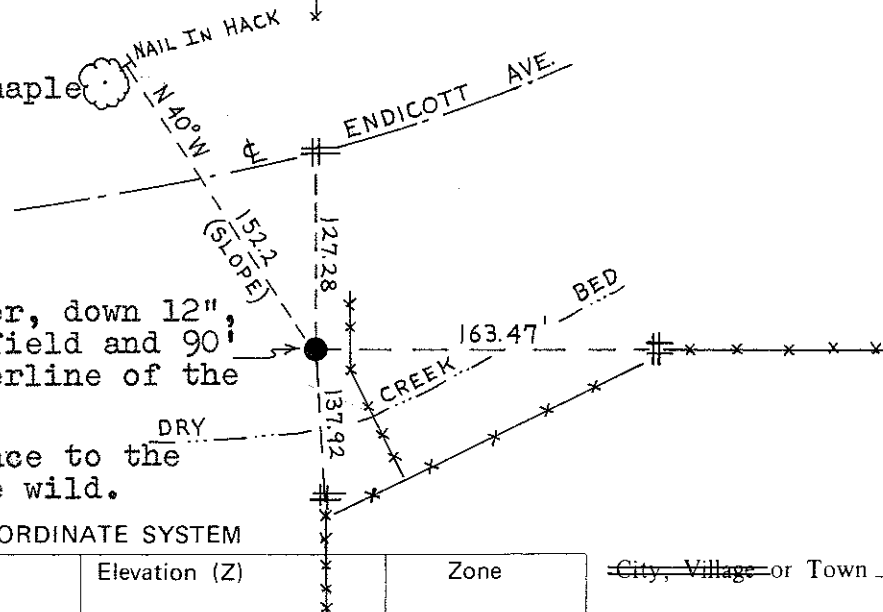
William C. Jung

Bryan Meyer



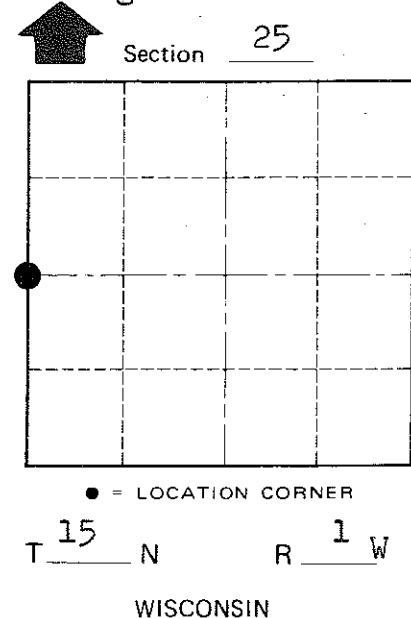
# = Set 3/4"x24" round iron bar

Double blazed 22" maple



Set Harrison marker, down 12", on the edge of a field and 90' North of the centerline of the creek bed.

Note: The line fence to the West appears to be wild.



COUNTY SURVEYOR FORM NO. 1

SURVEY CONTROL ORDER

Horizontal \_\_\_\_\_

Vertical \_\_\_\_\_

WISCONSIN COORDINATE SYSTEM

Corner	East (X)	North (Y)	Elevation (Z)	Zone
Control Sta. Name				

City, Village or Town Wellington  
County of Monroe  
Wisconsin