

I, William C. Jung, do hereby certify that on the 4th day of October 1982, I found ~~(evidence)~~ (no evidence) of the West 1/4 corner of Section 30, T 15 N, R 1 E Fourth Principal Meridian, and I re-established said corner according to the Wisconsin Statutes as shown and described hereon.

History of corner establishment since Original Government Survey

There is no recorded history of this corner since the original government survey.

Description of corner evidence found:

I set this corner by single proportionate measurement along the 4th Principal Meridian, using the NW corner of Section 30 and the W1/16NW corner of Section 6, T14N-R1E, as my points of termination.

Dated this 24th day of Jan. 1983

William C. Jung

Deputy County Surveyor
Title

UPDATE: This corner was perpetuated from ties taken prior to construction. Set a new monument, as indicated below, in bituminous pavement. New ties taken as illustrated below.

Douglas J. Malliet, R.L.S.#1266
28 October 1996

Approved: **HARLEY A. SIME**
MONROE CO. SURVEYOR

Description of corner and witness monuments, references and accessories used to perpetuate the original or re-established location of this corner:

Set 3/4"x24" round iron bar, on ditch side-hill, 18'± East of edge of pavement

existing fenceline

Existing 3/4"x24" I.B.

Set 1 1/2"x12" round iron bar at corner; 4.1'± West of centerline of traveled way

Set 1 1/2"x24" iron pipe, 24'± West of edge of pavement

existing sign & post at westerly face of power pole

existing fenceline

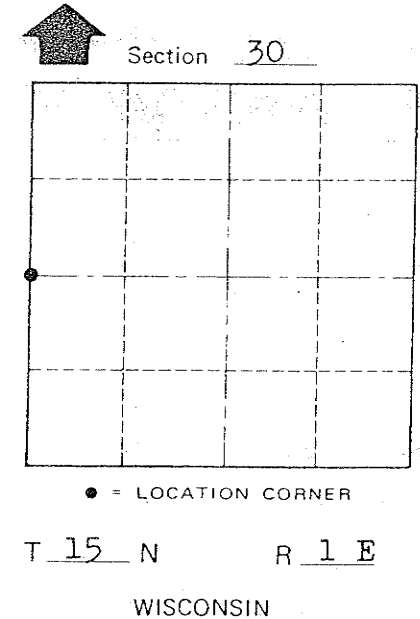
Ex. nail in P.P.

Set 1 1/2"x24" iron pipe

Bearings are magnetic

previous distance, not verified

Ex. nail on Southwesterly side of 19" Spruce (not blazed) - (Bark has grown over nail & was not exposed)



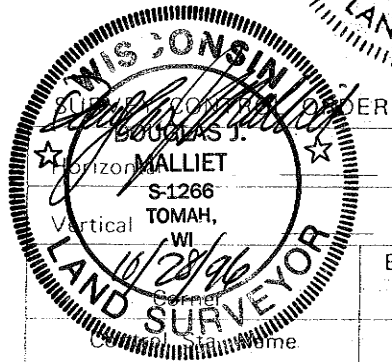
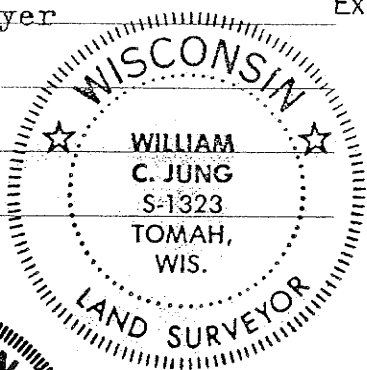
Witnesses to corner location:

William C. Jung

Bryan H. Meyer

CREW:

Douglas J. Malliet
Matthew Schrieber
28 October 1996



WISCONSIN COORDINATE SYSTEM

East (X)	North (Y)	Elevation (Z)	Zone

City, Village or Town of Glendale

County of Monroe

4409

COUNTY SURVEYOR FORM NO. 1

21501252000

I, William C. Jung, do hereby certify that on the 4th day of October 1982, I found ~~(evidence)~~ (no evidence) of the West 1/4 corner of Section 30, T 15 N, R 1 E Fourth Principal Meridian, and I re-established said corner according to the Wisconsin Statutes as shown and described hereon.

History of corner establishment since Original Government Survey

There is no recorded history of this corner since the original government survey.

Description of corner evidence found:

I set this corner by single proportionate measurement along the 4th Principal Meridian, using the NW corner of Section 30 and the W1/16NW corner of Section 6, T14N-R1E, as my points of termination.

Dated this 24th day of Jan. 1983.

William C. Jung

Deputy County Surveyor
Title

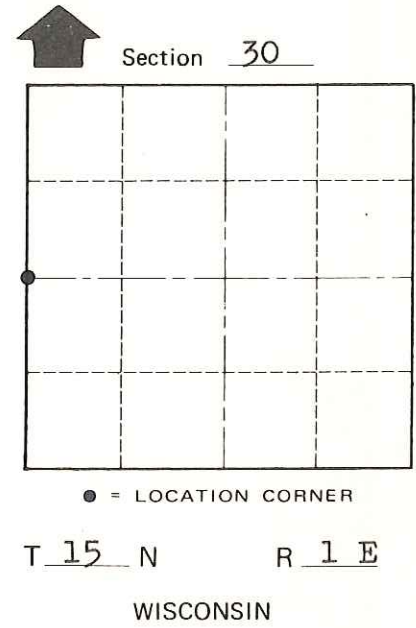
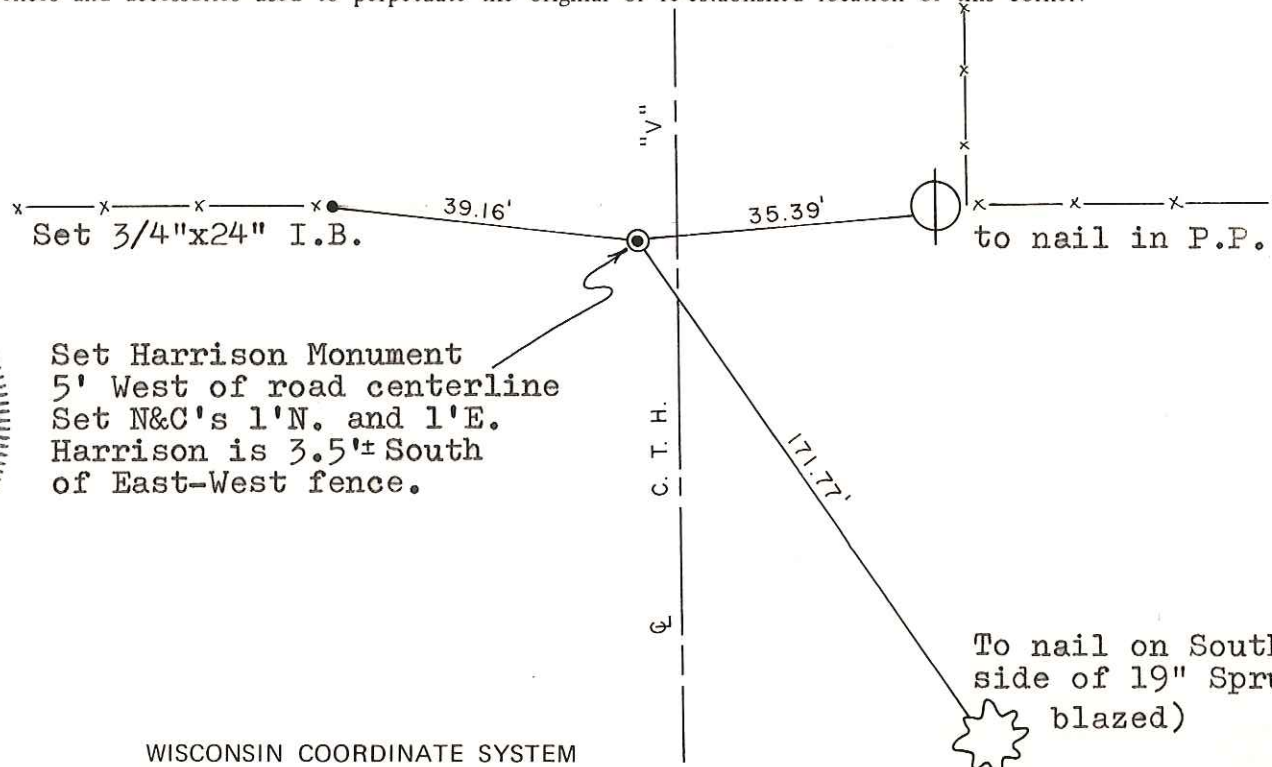
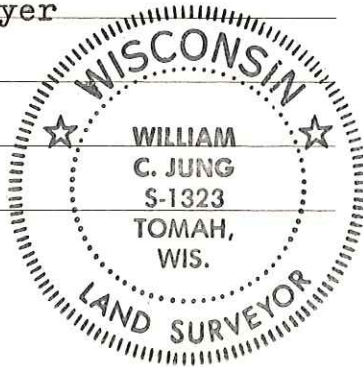
Approved: **HARLEY A. SIME**
MONROE CO. SURVEYOR

Description of corner and witness monuments, references and accessories used to perpetuate the original or re-established location of this corner:

Witnesses to corner location:

William C. Jung

Bryan H. Meyer



SURVEY CONTROL ORDER

Horizontal	_____
Vertical	_____

WISCONSIN COORDINATE SYSTEM

Corner	East (X)	North (Y)	Elevation (Z)	Zone
Control Sta. Name				

To nail on Southwesterly side of 19" Spruce (not blazed)

~~City, Village or~~ Town of Glendale
County of Monroe

COUNTY SURVEYOR FORM NO. 1