

I, William C. Jung, do hereby certify that on the 4th day of October 1982, I found ~~(evidence)~~ (no evidence) of the Southwest corner of Section 30, T. 15 N, R. 1 E Fourth Principal Meridian, and I re-established said corner according to the Wisconsin Statutes as shown and described hereon.

Dated this 26th day of Jan. 1983

William C. Jung

Deputy County Surveyor

History of corner establishment since Original Government Survey

Holden found the original corner in June of 1904.

Description of corner evidence found:

I set this corner by single proportionate measurement along the 4th Principal Meridian, using the NW Corner of Section 30 and the W1/16NW Corner of Section 6, T14N-R1E as my points of termination.

UPDATE: This corner was perpetuated from ties taken prior to construction. Set a new monument, as illustrated below, in bituminous pavement, at the corner. New ties taken as indicated below.

Douglas J. Malliet, R.L.S. #1266, 28 October 1996

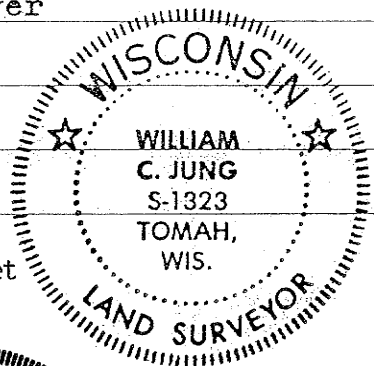
Approved: **HARLEY A. SIME**
MONROE CO. SURVEYOR

Description of corner and witness monuments, references and accessories used to perpetuate the original or re-established location of this corner:

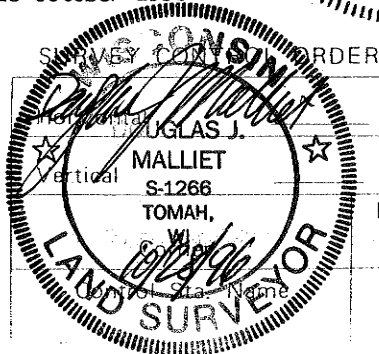
Witnesses to corner location:

William Jung

Bryan Meyer



CREW:
Douglas J. Malliet
Matthew Schrieber
28 October 1996



Centerline of C.T.H. "V"

Bearings are magnetic

Set 3/4"x24" round iron bar, 6'± West of stop sign and in line with stop sign and street sign

Stop sign

Street sign
N20°W, 80.42'

Existing nail in power pole
#K530L1; N52°E, 41.38'

Existing sign & post, N75°E, 21.3'±

Set 1 1/2"x12" round iron bar, 4.3'± West of East edge of pavement, 12'± North of centerline of field entrance to East

Centerline of field entrance

S45°E, 46.55'

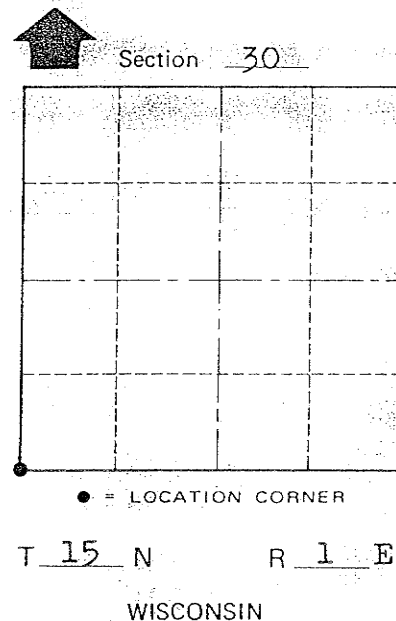
Set 3/4"x24" round iron bar; right-of-way marker

S46°W
46.63'

Centerline of Ostrich Road

Set 3/4"x24" round iron bar; right-of-way marker

WISCONSIN COORDINATE SYSTEM



East (X)	North (Y)	Elevation (Z)	Zone

~~Village~~ Town of Glendale

County of Monroe

4409

COUNTY SURVEYOR FORM NO. 1

CERTIFICATE

I, William C. Jung, do hereby certify that on the 4th day of October 1982, I found ~~(evidence)~~ (no evidence) of the Southwest corner of Section 30, T 15 N, R 1 E Fourth Principal Meridian, and I re-established said corner according to the Wisconsin Statutes as shown and described hereon.

Dated this 26th day of Jan. 1983.

William C. Jung
Deputy County Surveyor
Title

CERTIFIED LAND CORNER

History of corner establishment since Original Government Survey
Holden found the original corner in June of 1904.

Description of corner evidence found:

I set this corner by single proportionate measurement along the 4th Principal Meridian, using the NW Corner of Section 30 and the W1/16NW Corner of Section 6, T14N-R1E as my points of termination.

No. 113 (3)
2/50125000

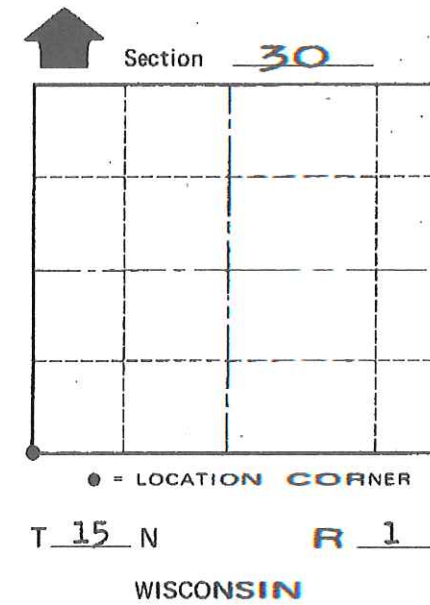
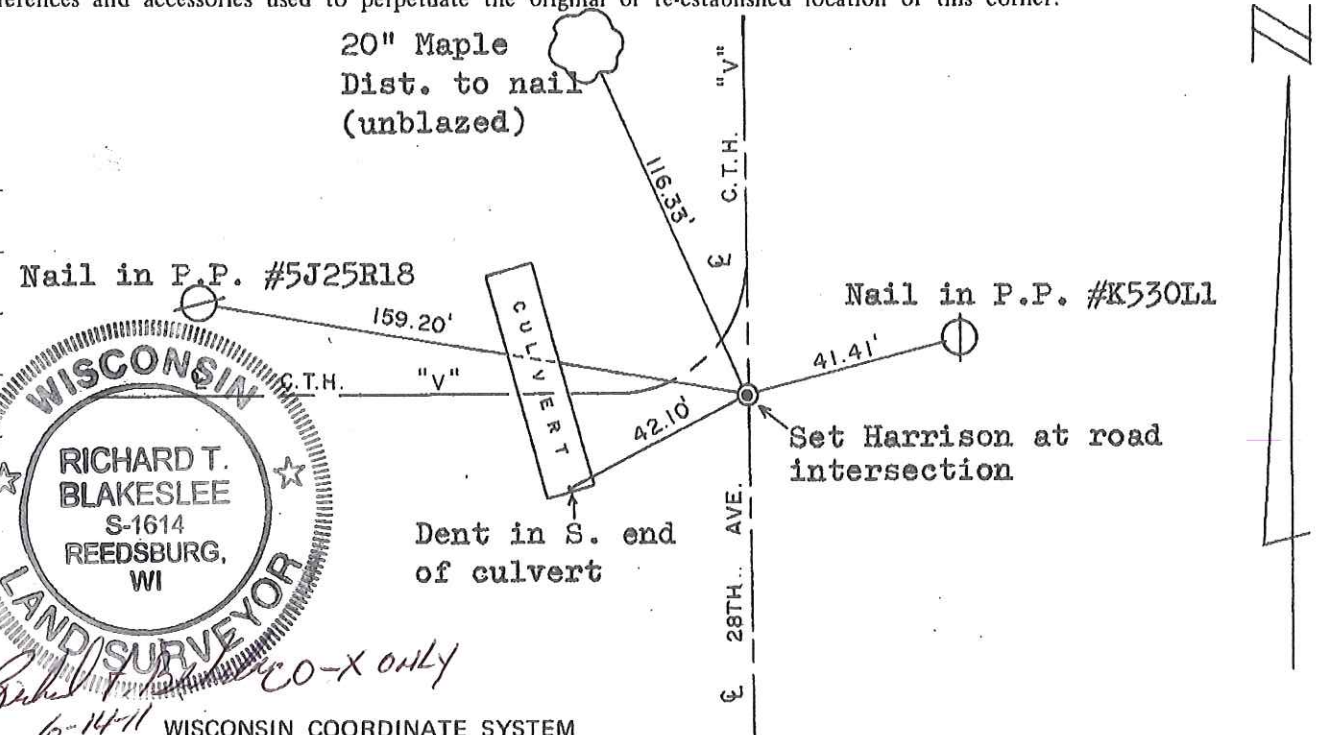
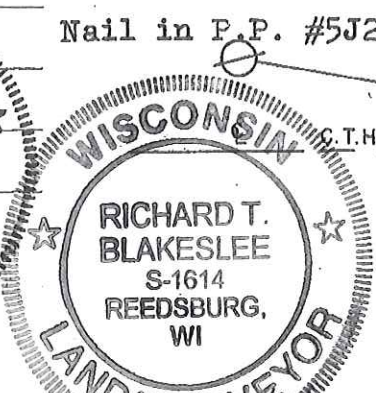
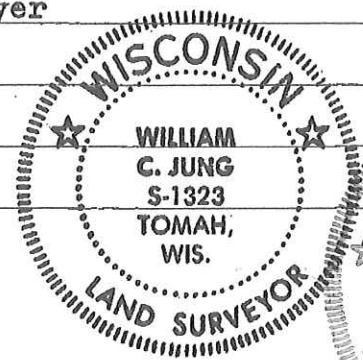
Approved: **HARLEY A. SIME**
MONROE CO. SURVEYOR

COUNTY SURVEYOR FORM NO. 1.

Description of corner and witness monuments, references and accessories used to perpetuate the original or re-established location of this corner:

Witnesses to corner location:

William Jung
Bryan Meyer



SURVEY CONTROL ORDER

Horizontal	_____
Vertical	_____

Corner	East (X)	North (Y)	Elevation (Z)	Zone
	726163.075	305423.26		
Control Sta. Name				

City, Village or Town of Glendale
County of Monroe

Richard T. Blakeslee
6-14-11 WISCONSIN CO-X ONLY
WISCONSIN COORDINATE SYSTEM

21501250000

I, William C. Jung, do hereby certify that on the 4th day of October 1982, I found ~~(evidence)~~ (no evidence) of the Southwest corner of Section 30, T 15 N, R 1 E Fourth Principal Meridian, and I re-established said corner according to the Wisconsin Statutes as shown and described hereon.

Dated this 26th day of Jan. 1983.

William C. Jung

Deputy County Surveyor

title

History of corner establishment since Original Government Survey
Holden found the original corner in June of 1904.

Description of corner evidence found:

I set this corner by single proportionate measurement along the 4th Principal Meridian, using the NW Corner of Section 30 and the W1/16NW Corner of Section 6, T14N-R1E as my points of termination.

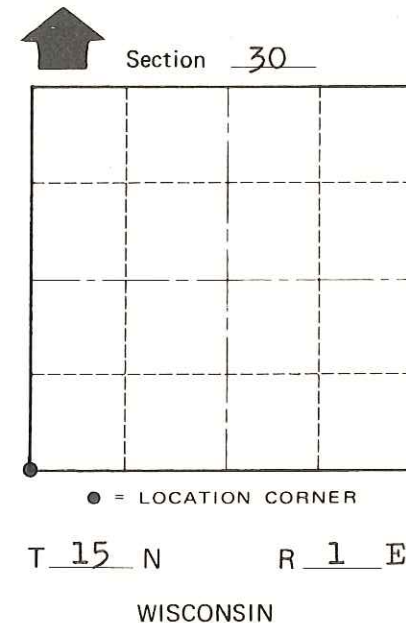
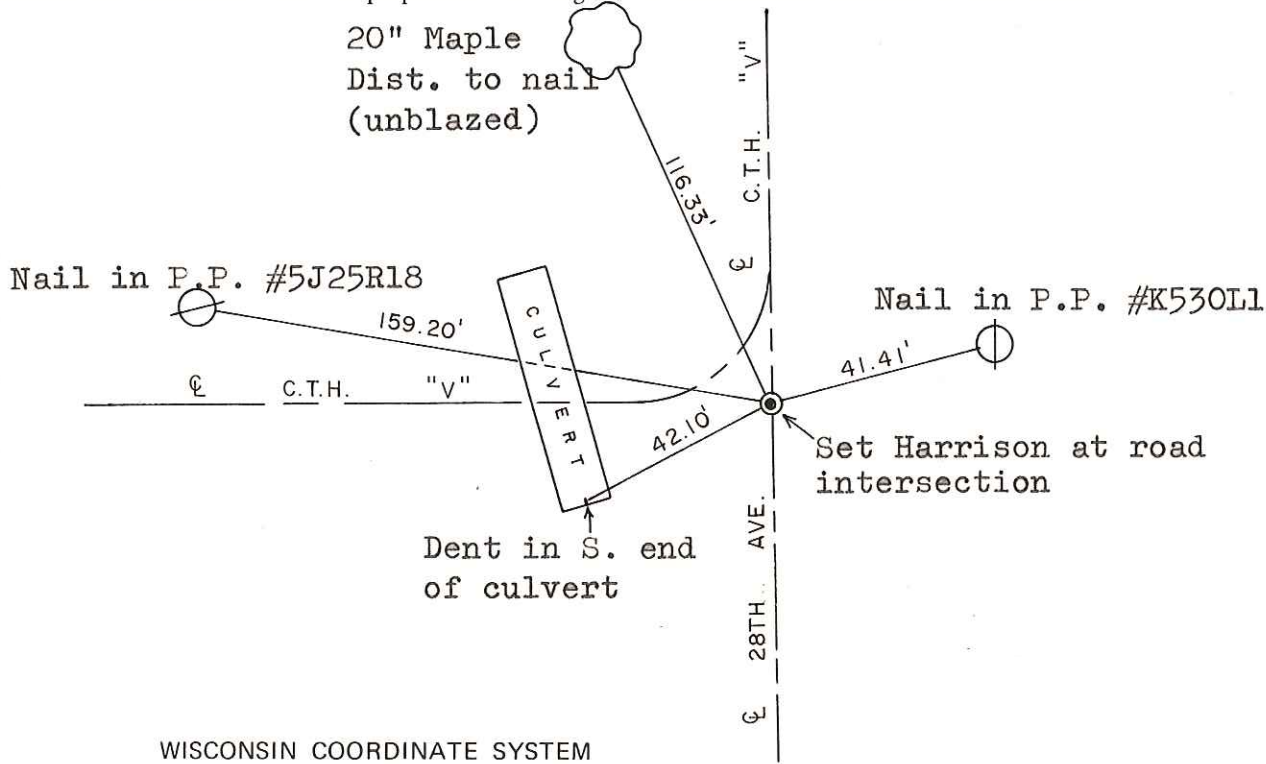
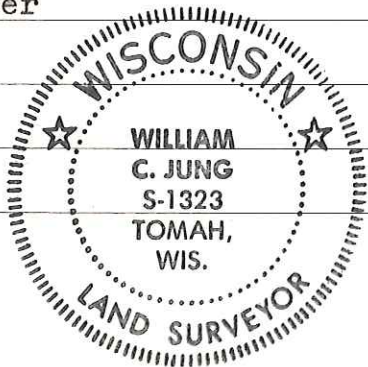
Approved: **HARLEY A. SIME**
MONROE CO. SURVEYOR

Description of corner and witness monuments, references and accessories used to perpetuate the original or re-established location of this corner:

Witnesses to corner location:

William Jung

Bryan Meyer



SURVEY CONTROL ORDER

Horizontal	_____
Vertical	_____

WISCONSIN COORDINATE SYSTEM

Corner	East (X)	North (Y)	Elevation (Z)	Zone
Control Sta. Name				

~~City, Village or~~ Town of Glendale
County of Monroe

COUNTY SURVEYOR FORM NO. 1