

I, William C. Jung do hereby certify that on the 27th day of September 1982, I found (evidence) ~~(no evidence)~~ of the West 1/4 corner of Section 19, T 15 N, R 1 E Fourth Principal Meridian, and I re-established said corner according to the Wisconsin Statutes as shown and described hereon.

Dated this 26th day of Jan. 1983.

William C. Jung

Deputy County Surveyor

History of corner establishment since Original Government Survey

None recorded since the original government survey.

Description of corner evidence found:

I set the corner on line and equidistant between the NW and SW section corners. This fits the existing evidence very well as the corner not only falls at the road intersection, but also on line with the old fence to the West.

UPDATE: This corner was perpetuated from ties taken prior to road reconstruction. Set a new monument as indicated below, in bituminus pavement at the corner. New ties taken as illustrated below.

Approved: **HARLEY A. SIME**
MONROE CO. SURVEYOR

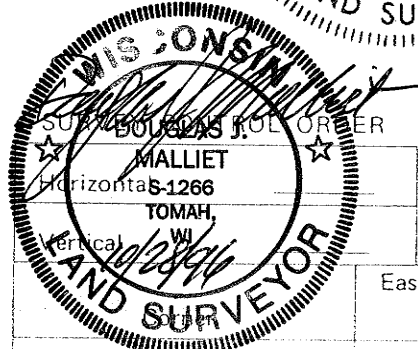
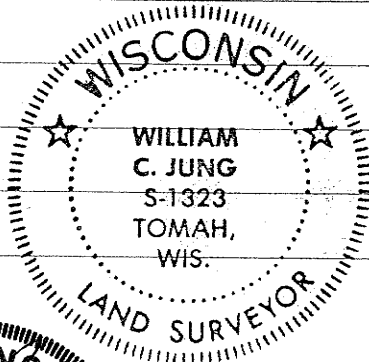
Douglas J. Malliet
R.L.S. #1266 10/28/96

Description of corner and witness monuments, references and accessories used to perpetuate the original or re-established location of this corner:

Witnesses to corner location:

Jung

Pliner



Set 3/4"x24" round iron bar

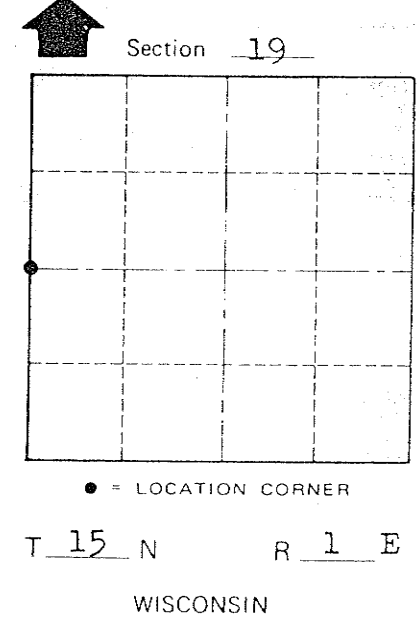
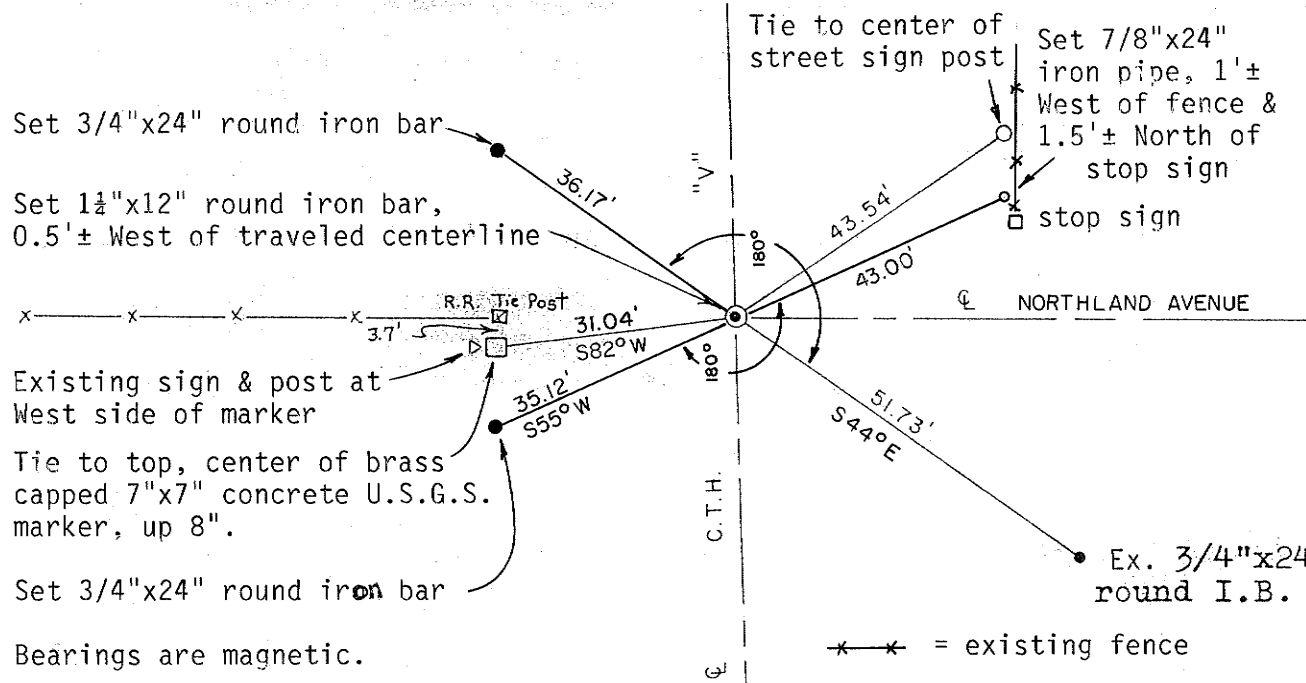
Set 1 1/2"x12" round iron bar, 0.5'± West of traveled centerline

Existing sign & post at West side of marker

Tie to top, center of brass capped 7"x7" concrete U.S.G.S. marker, up 8".

Set 3/4"x24" round iron bar

Bearings are magnetic.



CREW: Douglas J. Malliet, R.L.S.; Matthew Schrieber
28 October 1996

City, Village or Town of Glendale

County of Monroe

WISCONSIN COORDINATE SYSTEM

Control Sta. Name	East (X)	North (Y)	Elevation (Z)	Zone

4409

COUNTY SURVEYOR FORM NO. 1