

**21501230000**

I, William C. Jung, do hereby certify that on the 7th day of September 1982, I found (evidence) ~~(no evidence)~~ of the Northwest corner of Section 25, T 15 N, R 1 W Fourth Principal Meridian, and I re-established said corner according to the Wisconsin Statutes as shown and described hereon.

Dated this 26th day of Jan. 1983.

William C. Jung

Deputy County Surveyor

Title

History of corner establishment since Original Government Survey

The 1886 Town Road Records show this corner to be in the centerline of the road to the North, surveyed by LaRue. LaRue found this corner in April of 1900. Holden found the original corner in April of 1901 and in June of 1910.

Description of corner evidence found:

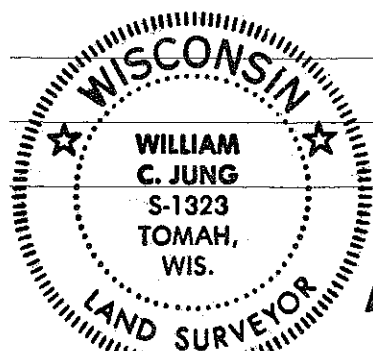
I accepted the occupied corner as the best available evidence of the original government corner. Set as such it matches the road intersection and the line fence to the West. It fits the 1/2 mile to the North very good (see tie sheet #79). Also, I find that this corner fits the existing evidence along the West line of Section 25 extremely well. My final locations for the NW, W1/16NW, W1/4, W1/16SW, and SW Corners of Section 25 all fit a pattern in regard to distances and North-South direction.

Description of corner and witness monuments, references and accessories used to perpetuate the original or re-established location of this corner:

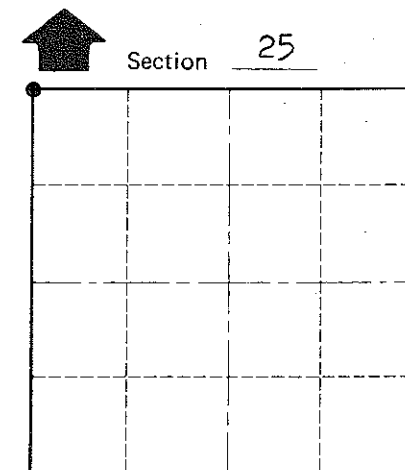
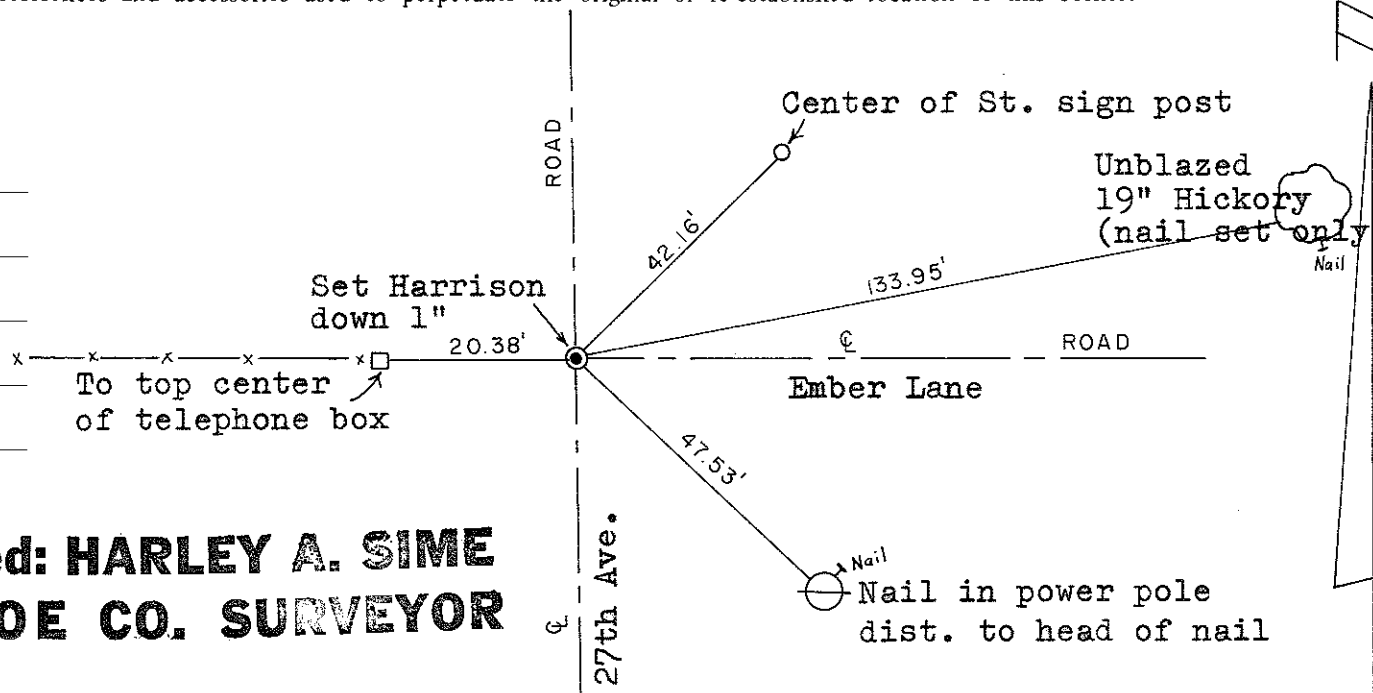
Witnesses to corner location:

William C. Jung

Melvin Pliner



Approved: **HARLEY A. SIME**  
**MONROE CO. SURVEYOR**



● = LOCATION CORNER  
T 15 N R 1 W  
WISCONSIN

COUNTY SURVEYOR FORM NO. 1

SURVEY CONTROL ORDER

Horizontal \_\_\_\_\_  
Vertical \_\_\_\_\_

WISCONSIN COORDINATE SYSTEM

Corner	East (X)	North (Y)	Elevation (Z)	Zone
Control Sta. Name				

~~City, Village or~~ Town of Wellington  
County of Monroe