

CERTIFICATE

CERTIFIED LAND CORNER

No. 85

21501220000

I, William C. Jung, do hereby certify that on the 31st day of March 1983 I found (evidence) ~~to evidence~~ of the N.W. corner of Section 26, T 15 N, R 1 W Fourth Principal Meridian, and I re-established said corner according to the Wisconsin Statutes as shown and described hereon.

Dated this 31st day of March 1983.

William C. Jung  
Deputy County Surveyor  
Title

History of corner establishment since Original Government Survey  
Ingalls was at this corner in 1873. A.B. Holden re-established this corner in April of 1887. Holden shows an iron at this corner in April of 1901. He was again at this corner in December of 1901 and November of 1905. In June of 1910, Holden shows an iron at this corner.

Description of corner evidence found:

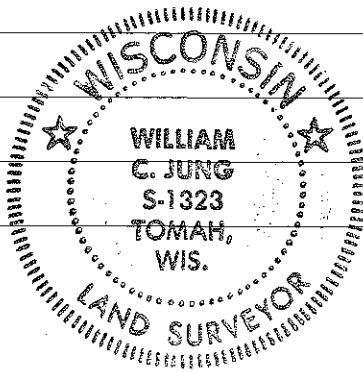
I found an old wagon thimble buried near the occupied corner. I also found the stump of one of Fred Holden's bearing trees. The iron and tree match what Holden called for. I removed the thimble and replaced it with a Harrison marker.

Approved: **HARLEY A. SIME**  
**MONROE CO. SURVEYOR**

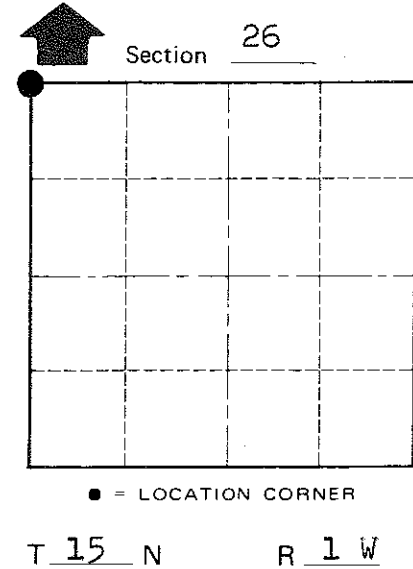
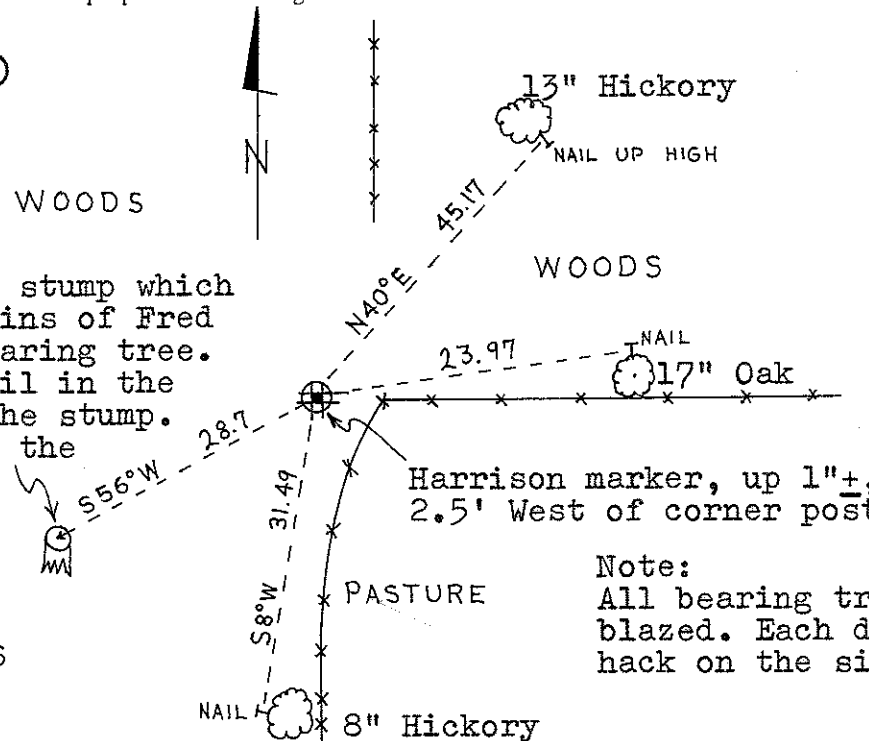
Description of corner and witness monuments, references and accessories used to perpetuate the original or re-established location of this corner:

(All bearings are magnetic.)

Witnesses to corner location:  
William C. Jung



Found a 30" stump which is the remains of Fred Holden's bearing tree. Set a 6" nail in the center of the stump. Measured to the nail.



Note:  
All bearing trees are double blazed. Each distance is to a nail set in a hack on the side of the tree.

SURVEY CONTROL ORDER

Horizontal	_____
Vertical	_____

Corner	East (X)	North (Y)	Elevation (Z)	Zone
Control Sta. Name				

City, Village or Town Wellington  
County of Monroe  
Wisconsin

COUNTY SURVEYOR FORM NO. 1