

21501200020

I, Lawrence A. Feddersen, do hereby certify that on the 11th day of September 1996, I found (evidence) (no evidence) of the South Quarter corner of Section 20, T 15 N, R 1 W Fourth Principal Meridian, and I re-established said corner according to the Wisconsin Statutes as shown and described hereon.

Dated this 20th day of September 1996.

Lawrence A. Feddersen

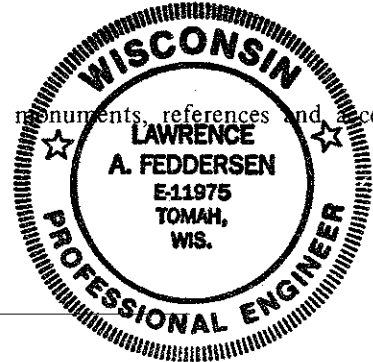
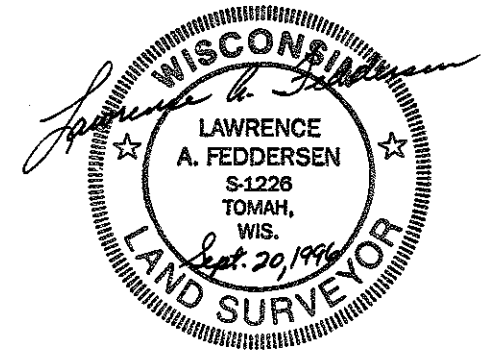
Registered Land Surveyor

History of corner establishment since Original Government Survey

No record of re-established corner

Description of corner evidence found:

Accepted a 4-way fence as best possible evidence.



Description of corner and witness monuments, references and accessories used to perpetuate the original or re-established location of this corner:

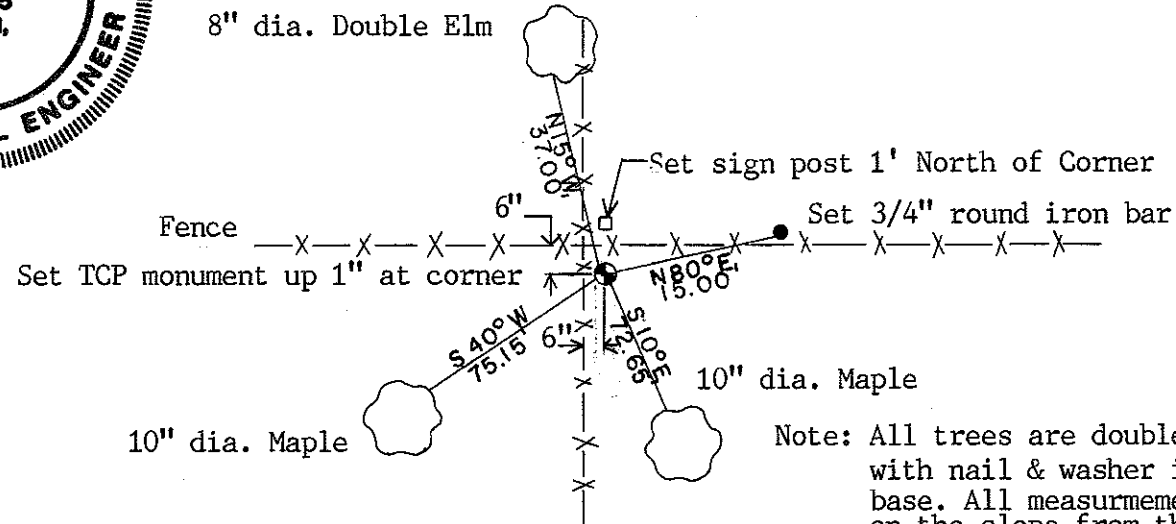
Witnesses to corner location:

Lawrence A. Feddersen

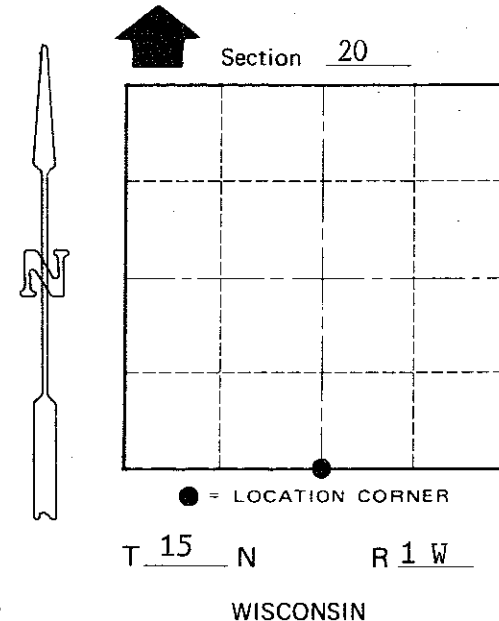
Harold A. Haberlin

Timothy J. Jeatran

Kelly D. Callaway



Note: All trees are double blazed with nail & washer in side base. All measurements are on the slope from the top of TCP to the center of nail & washer



COUNTY SURVEYOR FORM NO. 1

SURVEY CONTROL ORDER

Table with 2 rows: Horizontal, Vertical

WISCONSIN COORDINATE SYSTEM

Table with 5 columns: Corner, East (X), North (Y), Elevation (Z), Zone

Wellington

County of Monroe