

2150120000

I, Lawrence A. Feddersen, do hereby certify that on the 11th day of September 1996, I found (evidence) (no evidence) of the Southeast corner of Section 20, T15 N, R 1 W Fourth Principal Meridian, and I re-established said corner according to the Wisconsin Statutes as shown and described hereon.

Dated this 20th day of September 1996.

Lawrence A. Feddersen

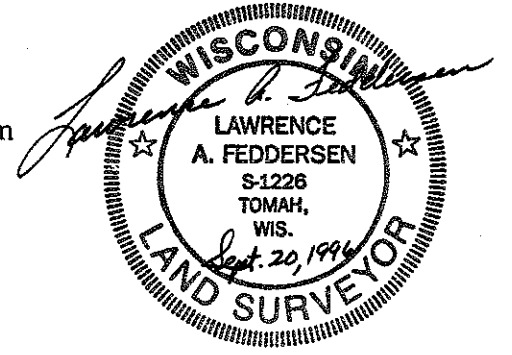
Registered Land Surveyor
Title

History of corner establishment since Original Government Survey

No record of corner restoration/re-establishment since the Original Government Survey

Description of corner evidence found:

Intersected the existing East-West fence line with a straight line between the NE corner and the E₄ corner extended South.



Description of corner and witness monuments, references and accessories used to perpetuate the original or re-established location of this corner:

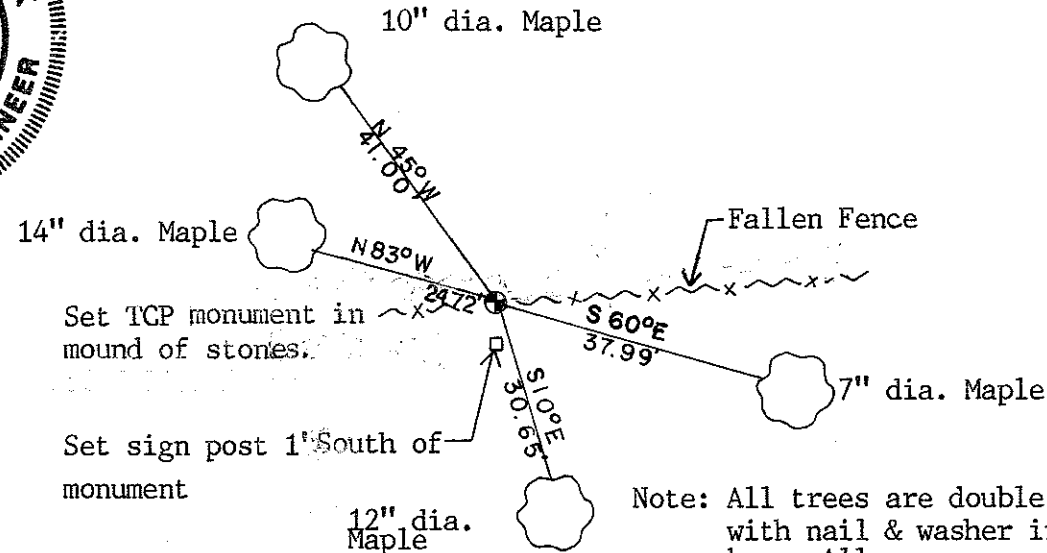
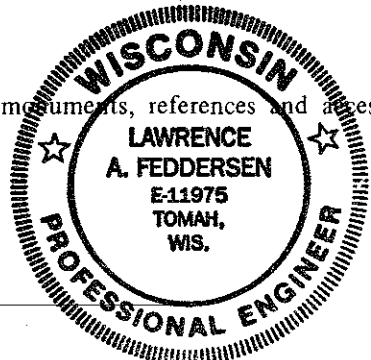
Witnesses to corner location:

Lawrence A. Feddersen

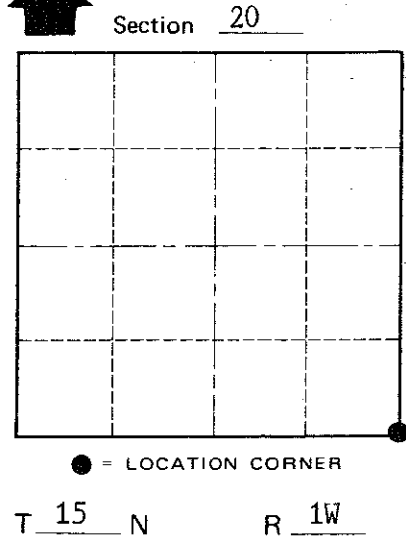
Harold A. Haberlin

Timothy J. Jeatran

Kelly D. Callaway



Note: All trees are double blazed with nail & washer in side base. All measurements are on the slope from the top of TCP to the center of nail & washer.



WISCONSIN

COUNTY SURVEYOR FORM NO. 1

SURVEY CONTROL ORDER

Horizontal _____
Vertical _____

WISCONSIN COORDINATE SYSTEM

Corner	East (X)	North (Y)	Elevation (Z)	Zone
Control Sta. Name				

~~XXXXXXXXXX~~ Town of Wellington

County of Monroe