

21501192000

I, Lawrence A. Feddersen, do hereby certify that on the 9th day of September 1996, I found ~~(no evidence)~~ (no evidence) of the West Quarter corner of Section 20, T 15 N, R 1 W Fourth Principal Meridian, and I re-established said corner according to the Wisconsin Statutes as shown and described hereon.

History of corner establishment since Original Government Survey

No record of corner restoration/re-establishment since the Original Government Survey

Description of corner evidence found:

No evidence of a corner was found at this location. The corner was re-established on line and halfway between the Northwest corner and Southwest corner of Section 20.

Dated this 20th day of September 1996.

Lawrence A. Feddersen

Registered Land Surveyor

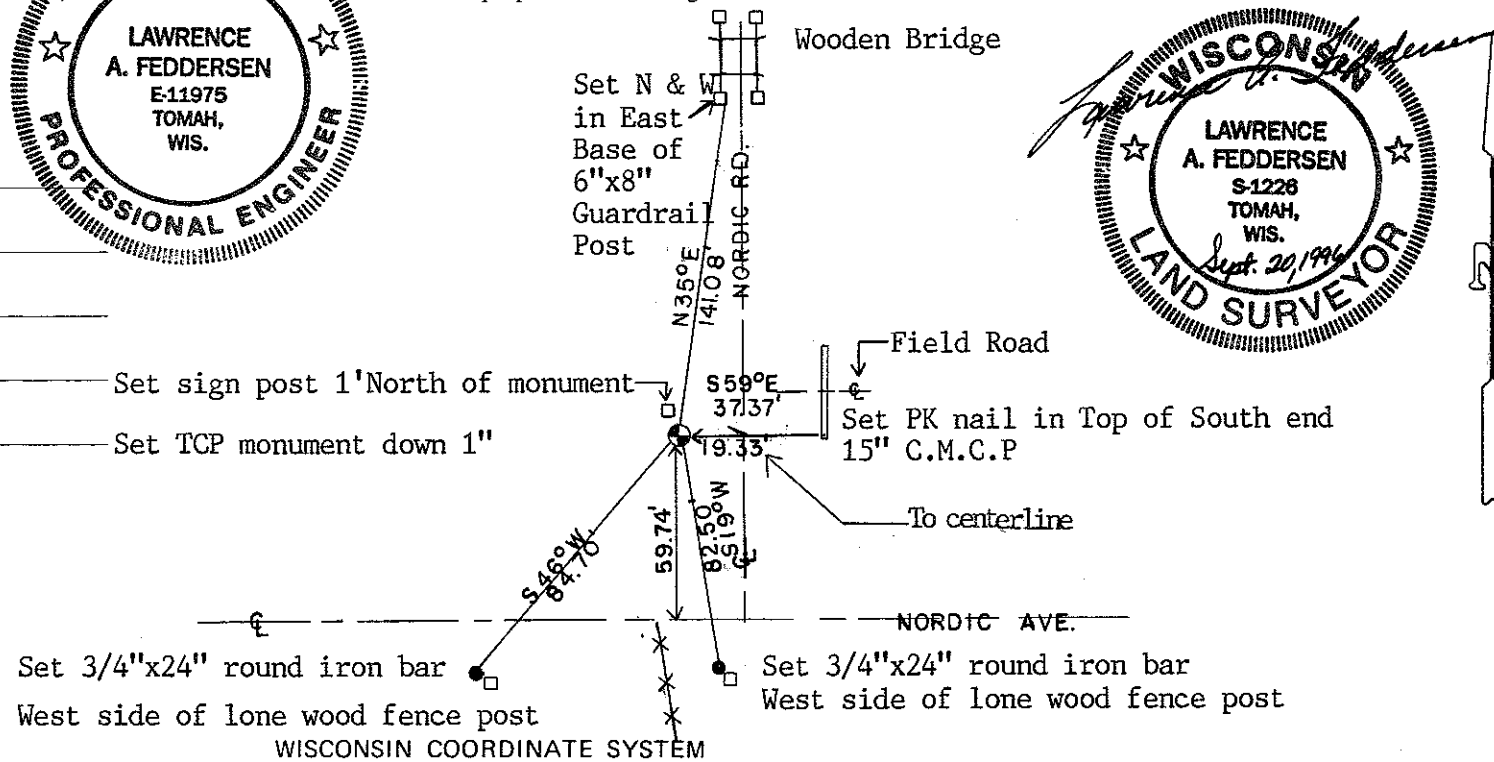
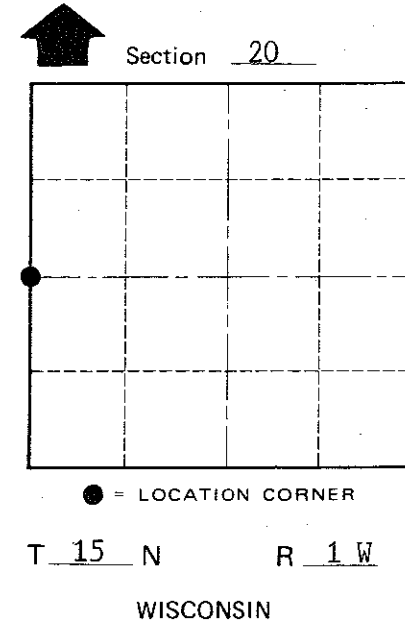
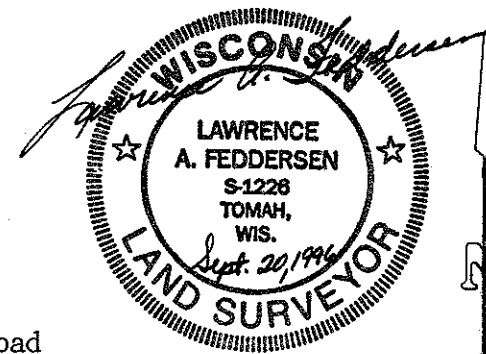
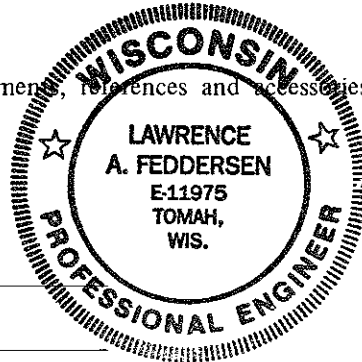
Title

COUNTY SURVEYOR FORM NO. 1

Description of corner and witness monument, references and accessories used to perpetuate the original or re-established location of this corner:

Witnesses to corner location:

- Lawrence A. Feddersen
- Harold A. Haberlin
- Timothy J. Jeatran
- Kelly D. Callaway



SURVEY CONTROL ORDER

| | |
|------------|-------|
| Horizontal | _____ |
| Vertical | _____ |

| Corner | East (X) | North (Y) | Elevation (Z) | Zone |
|-------------------|----------|-----------|---------------|------|
| Control Sta. Name | | | | |

XXXXXX Town of Wellington
County of Monroe