

21501190000

I, Lawrence A. Feddersen, do hereby certify that on the 9th day of September 1996, I found (evidence) (~~XXXXXXXXXX~~) of the Southwest corner of Section 20, T15 N, R1 W Fourth Principal Meridian, and I re-established said corner according to the Wisconsin Statutes as shown and described hereon.

Dated this 20th day of September 1996.

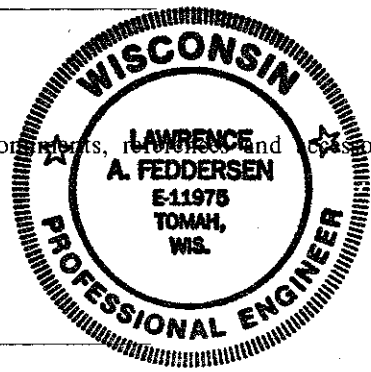
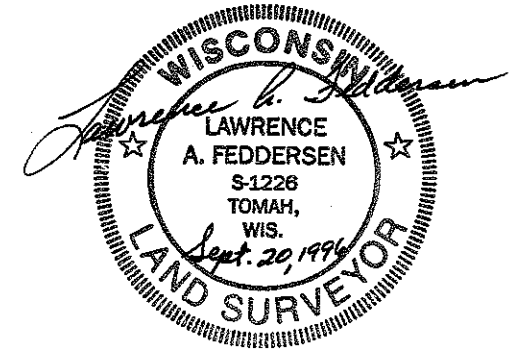
Lawrence A. Feddersen
Registered Land Surveyor
Title

History of corner establishment since Original Government Survey

No record of re-established corner

Description of corner evidence found:

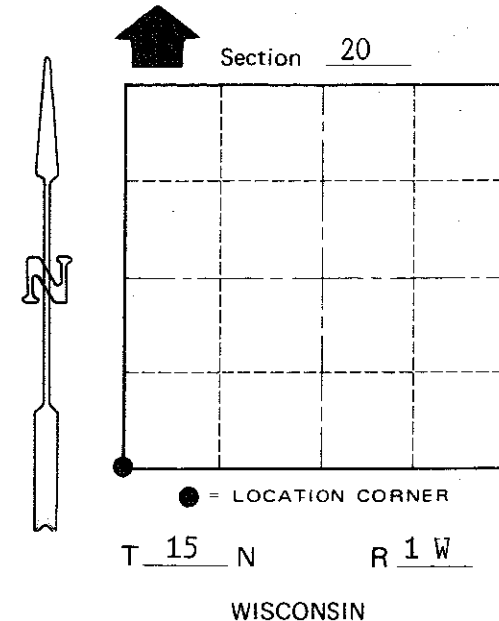
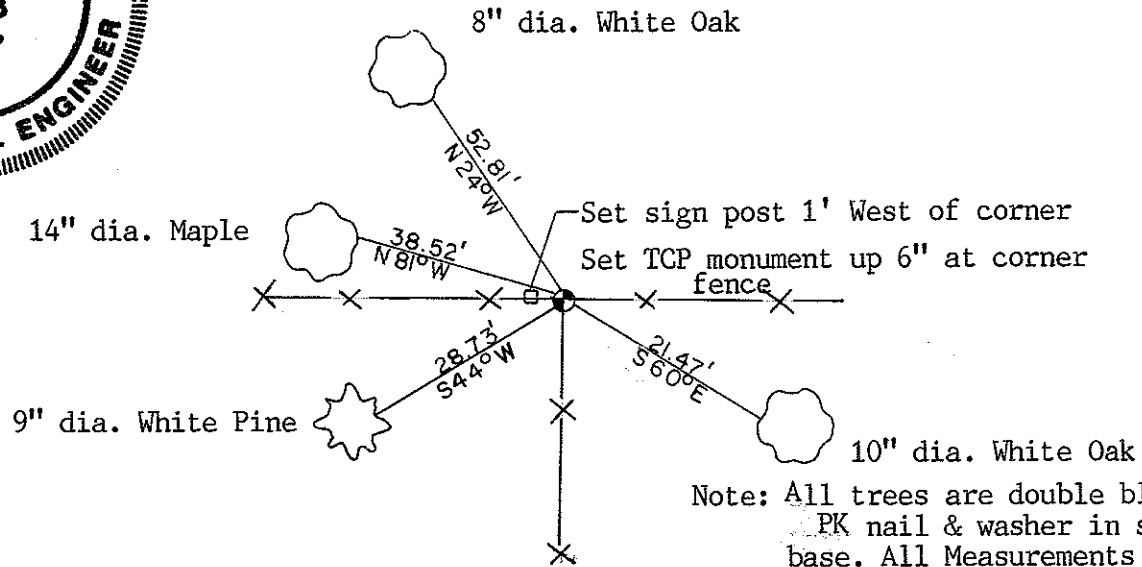
Accepted a 3-way fence as best possible evidence



Description of corner and witness monuments, re-established and existing monuments used to perpetuate the original or re-established location of this corner:

Witnesses to corner location:

- Lawrence A. Feddersen
- Harold A. Haberlin
- Timothy J. Jeatran
- Kelly D. Callaway



COUNTY SURVEYOR FORM NO. 1

SURVEY CONTROL ORDER

Horizontal	_____
Vertical	_____

WISCONSIN COORDINATE SYSTEM

Corner	East (X)	North (Y)	Elevation (Z)	Zone
Control Sta. Name				

XXXXXXXXXX Town of Wellington
County of Monroe