

21501182000

I, Gary L. Dechant, do hereby certify that on the 1st day of August 19 97, I found ~~(evidence)~~ (no evidence) of the E/4 corner of Section 18, T 15 N, R 1W Fourth Principal Meridian, and I re-established said corner according to the Wisconsin Statutes as shown and described hereon.

History of corner establishment since Original Government Survey

Hamilton La Rue was here in 1897.

Description of corner evidence found:

Set corner on line and at equal distance between section corners. Falls 125' south and 67' east of fence corner.

Dated this 11th day of August 19 97.

Gary L. Dechant

Registered Land Surveyor 1744

Title

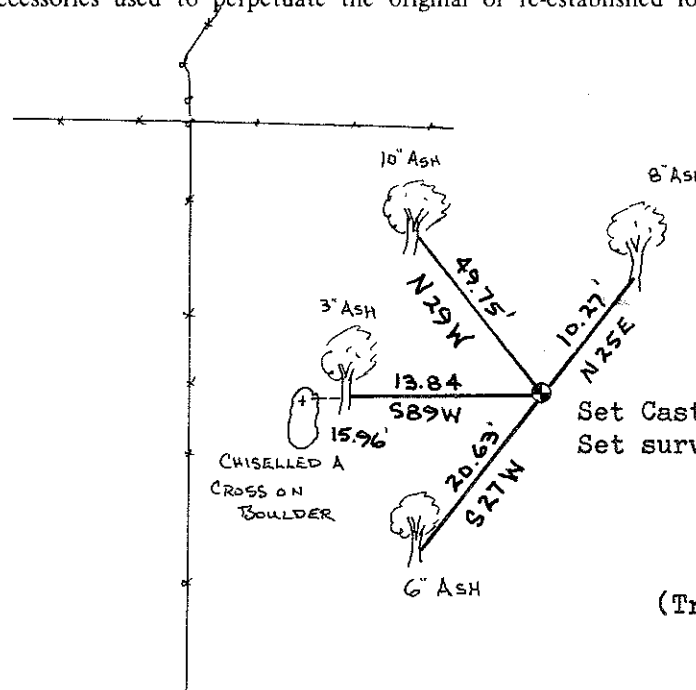
COUNTY SURVEYOR FORM NO. 1

Description of corner and witness monuments, references and accessories used to perpetuate the original or re-established location of this corner:

Witnesses to corner location:

David E. Madison

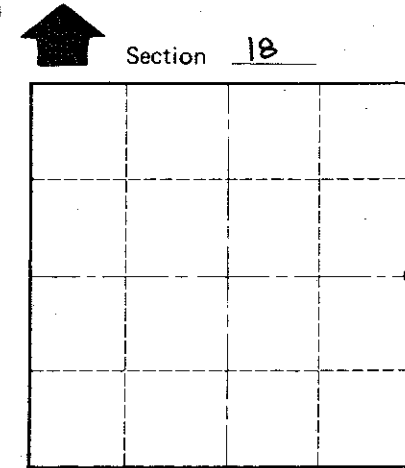
Gary L. Dechant



Set Cast Iron TCP County Monument  
Set survey sign 1' north.

(Trees double blazed with 40d nail set)

Gary L. Dechant  
WISCONSIN  
GARY L. DECHANT  
S-1744  
CAMP DOUGLAS, WI  
LAND SURVEYOR  
August 11, 1997



• = LOCATION CORNER

T 15 N R 1W

WISCONSIN

SURVEY CONTROL ORDER

Horizontal	_____
Vertical	_____

WISCONSIN COORDINATE SYSTEM

Corner	East (X)	North (Y)	Elevation (Z)	Zone
Control Sta. Name				

City, Village or Town WELLINGTON

County of MONROE