

CERTIFICATE

I, Lawrence A. Feddersen, do hereby certify that on the 4th day of September 1996, I found (evidence) ~~(XXXXXXXXXX)~~ of the North Quarter corner of Section 20, T 15 N, R 1W Fourth Principal Meridian, and I re-established said corner according to the Wisconsin Statutes as shown and described hereon.

Dated this 16th day of September 1996

Lawrence A. Feddersen

Registered Land Surveyor  
Title

CERTIFIED LAND CORNER

No. 70

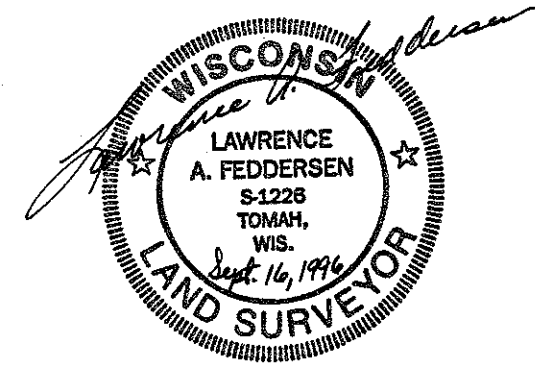
21501170020

History of corner establishment since Original Government Survey

No record of re-established corner.

Description of corner evidence found:

Accepted a 3-way fence as best possible evidence.



Description of corner and witness monuments, references and accessories used to perpetuate the original or re-established location of this corner:

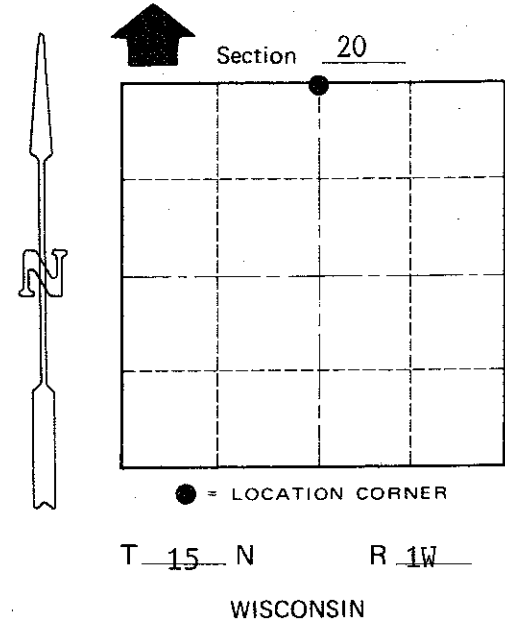
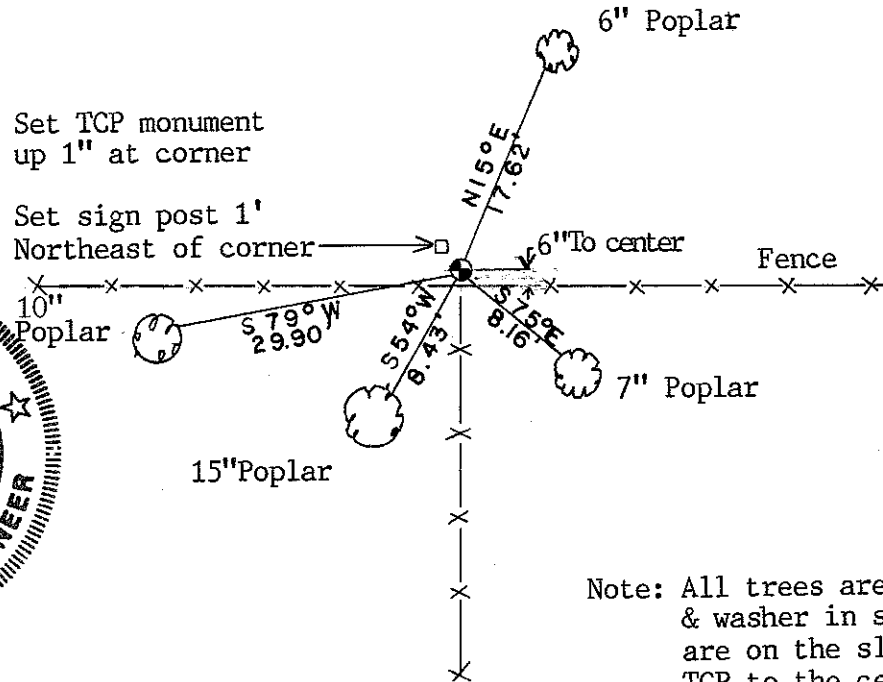
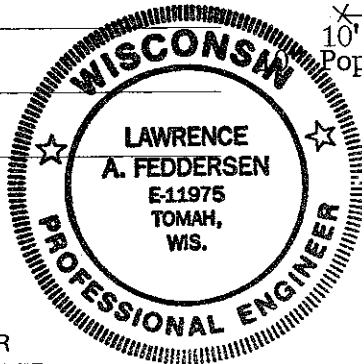
Witnesses to corner location:

Lawrence A. Feddersen

Harold A. Haberlin

Timothy J. Jeatran

Kelly D. Callaway



Note: All trees are double blazed with nail & washer in side base. All measurements are on the slope from the top of the TCP to the center of the nail & washer.

COUNTY SURVEYOR FORM NO. 1

SURVEY CONTROL ORDER

|            |       |
|------------|-------|
| Horizontal | _____ |
| Vertical   | _____ |

WISCONSIN COORDINATE SYSTEM

| Corner            | East (X) | North (Y) | Elevation (Z) | Zone |
|-------------------|----------|-----------|---------------|------|
| Control Sta. Name |          |           |               |      |

~~XXXXXXXXXX~~ City, Village or Town of Wellington

County of Monroe