

CERTIFICATE

CERTIFIED LAND CORNER

No. 69

21501170000

I, Lawrence A. Feddersen, do hereby certify that on the 4th day of September 1996, I found (evidence) ~~(XXXXXX)~~ of the Northeast corner of Section 20, T 15 N, R 1 W Fourth Principal Meridian, and I re-established said corner according to the Wisconsin Statutes as shown and described hereon.

Dated this 20th day of September 1996.

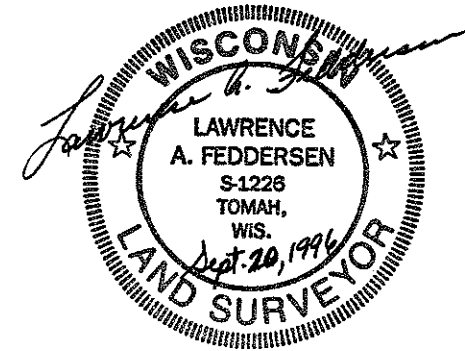
Lawrence A. Feddersen
Registered Land Surveyor
Title

History of corner establishment since Original Government Survey

No record of re-established corner

Description of corner evidence found:

Accepted a 3-way fence as best possible evidence

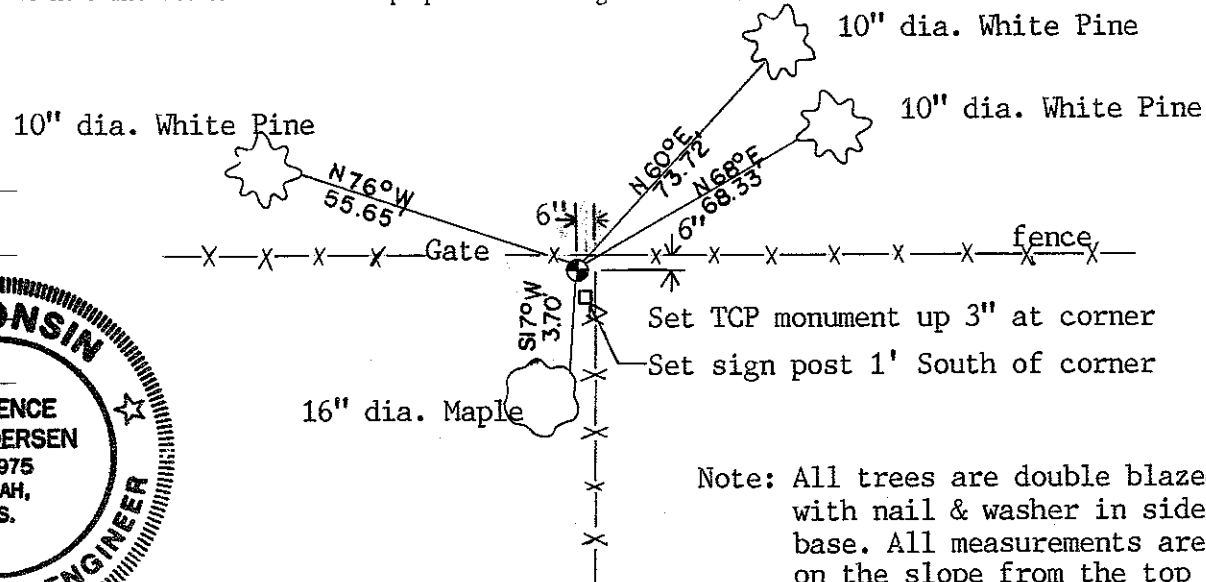
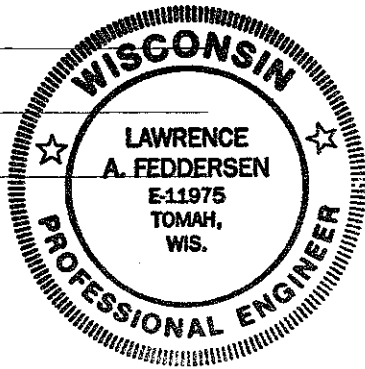


COUNTY SURVEYOR FORM NO. 1

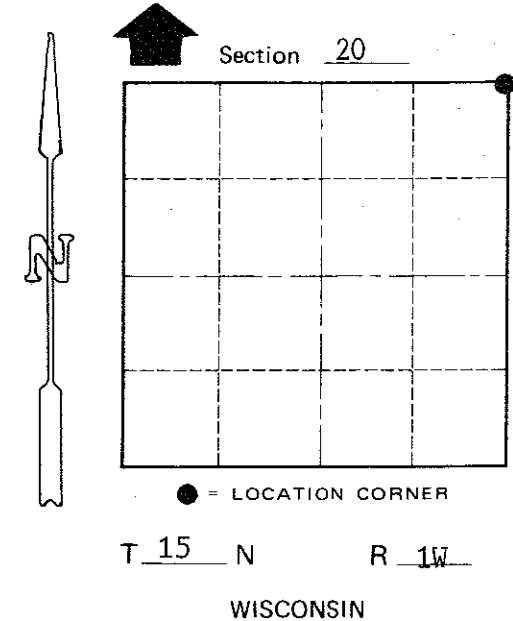
Description of corner and witness monuments, references and accessories used to perpetuate the original or re-established location of this corner:

Witnesses to corner location:

Lawrence A. Feddersen
Harold A. Haberlin
Timothy J. Jeatran
Kelly D. Callaway



Note: All trees are double blazed with nail & washer in side base. All measurements are on the slope from the top of TCP to the center of nail & washer



SURVEY CONTROL ORDER

Horizontal	_____
Vertical	_____

WISCONSIN COORDINATE SYSTEM

Corner	East (X)	North (Y)	Elevation (Z)	Zone
Control Sta. Name				

~~City of Wellington~~ Town of Wellington

County of Monroe