

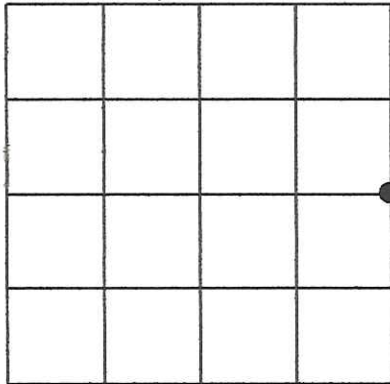
U.S. Public Land Survey Monument Record

Corner ID: E1/4 Sec. 16, T15N-R1W

21501162000

Type of Monument: Set brass capped 1" iron pipe over 3/4"x 6' square iron bar

Sec. 16, T15N-R1W



Gary L. Dechant

September 11, 2014

County Coordinates:

318572.501
710146.081

Witnesses: Zachariah P. Dechant
Gary L. Dechant

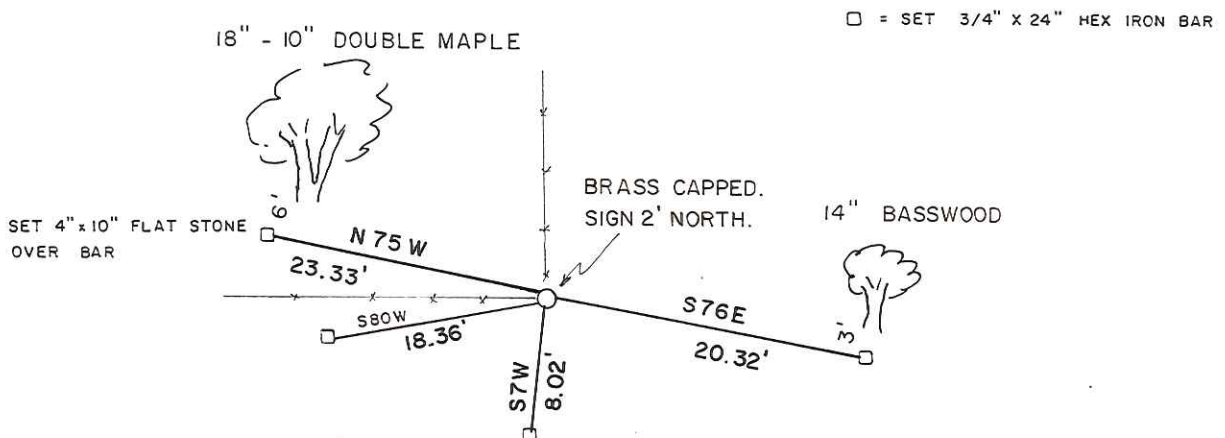
Basis For Monument Location:

(Show info such as history, evidence, testimony, found or method of relocation)

James Carroll found a 3/4" iron bar in 2006 as shown in Vol 20 CSM P 11.

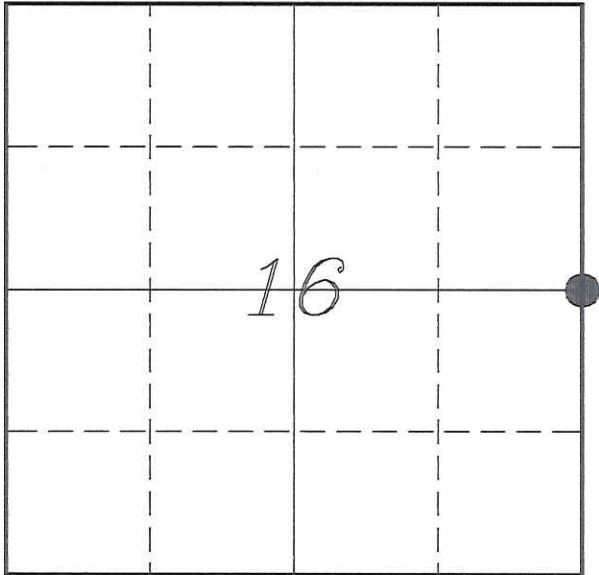
We found this 3/4" iron bar at an existing fence corner in 2007. We do not know its origin, but accepted it as the corner based upon best available evidence and used it for our survey in Vol 21 CSM P 95.

It was made known to me that a tie sheet had not been filed by previous surveyors. Found same 3/4" iron bar at fence corner and replaced it with brass capped monument. This is on a steep slope and very loose soil.



U. S. PUBLIC LAND SURVEY MONUMENT RECORD

**SECTION 16, T15N, R1W, TOWN OF WELLINGTON
MONROE COUNTY, WISCONSIN**



LOCATION OF LANDMARK

<i>MONROE COUNTY COORDINATE SYSTEM</i>	
<i>Northing</i>	<i>318572.488</i>
<i>Easting</i>	<i>710146.086</i>
<i>Datum</i>	<i>NAD 1983 (1991)</i>
<i>Elevation</i>	
<i>Datum</i>	
<i>TYPE OF LANDMARK:</i>	
<i>Set Harrison Monument</i>	
<i>BEARINGS ARE REFERENCED TO:</i>	
<i>Monroe County Coordinates</i>	

Witnesses: Laurence E Johns III

Date: 15 September 2013

Describe any record evidence, monument evidence, testimonial evidence or any other material evidence you considered and whether the monument was found or restored through acceptance of an obliterated evidence location.

No bearing trees of record were located.

I found the 3/4" iron rod on the Southeast side of a 2-way fence corner.

This monument has been used in past surveys and is based on occupation.

With no evidence contradicting this monument, I accepted it as the best available evidence of the original government corner and replaced it with a Harrison Monument.

Describe or show any material discrepancy between the location of the restored corner and that of the corner previously restored or re-established.

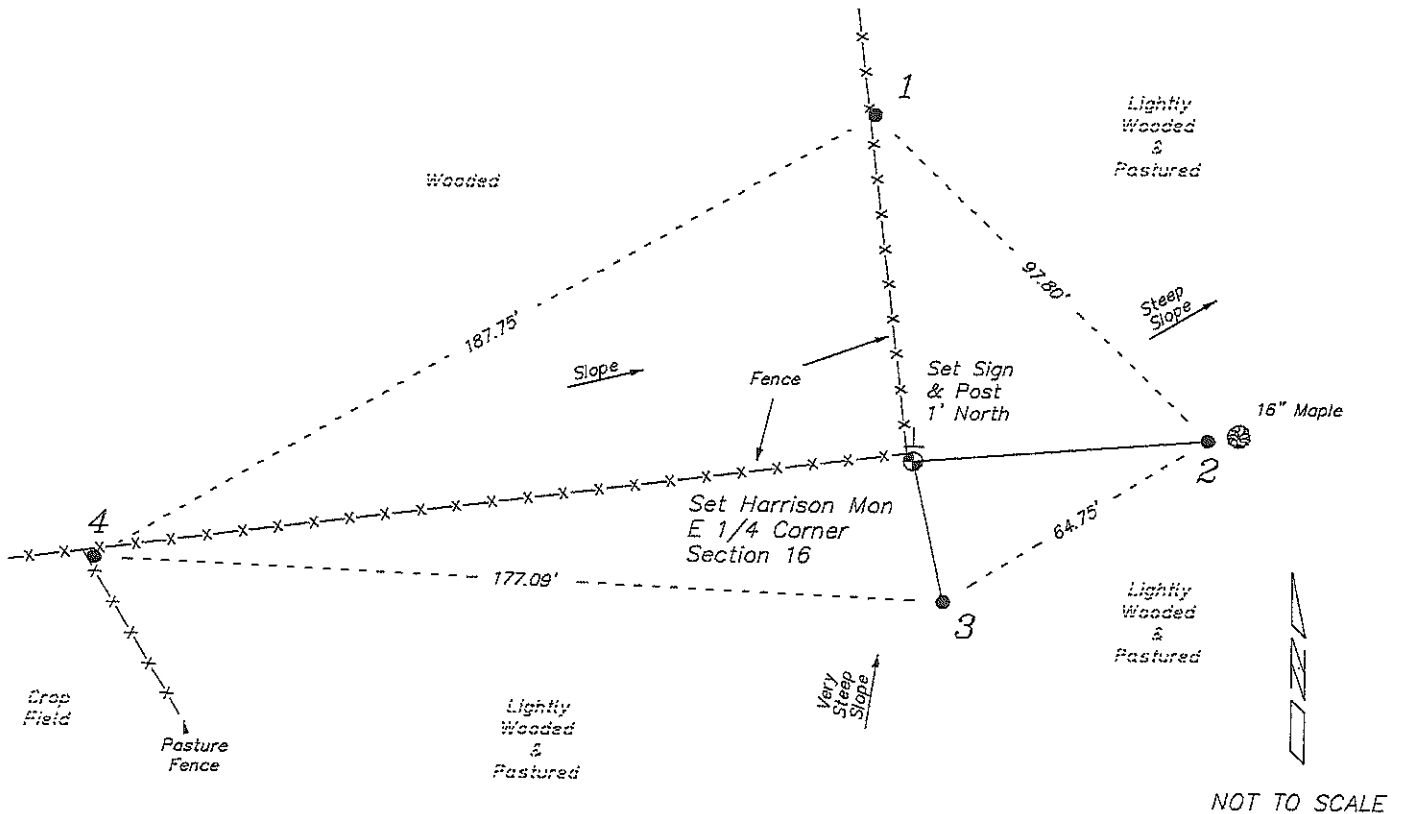
Alfred Brown established this corner in January 1846.

Patrick Carroll was at this corner, in May 2006, during a survey in Section 16. He shows that he found a 3/4" iron rod.

Gary Sime was at this corner, in July 2012, during a survey in Section 15. He shows that he found a 3/4" iron rod.

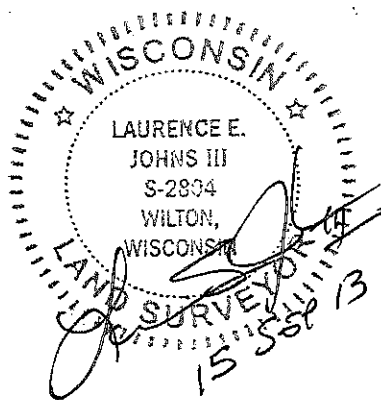
RECORD OF DURABLE WITNESS MONUMENTS

NO	DESCRIPTION	BEARING	DISTANCE
1	Set 3/4" x 18" Iron Rod In Fence Line	N 06°31'07" W	73.63'
2	Set 3/4" x 18" Iron Rod 2' West of a 16" Maple	N 85°33'37" E	61.76'
3	Set 3/4" x 18" Iron Rod On Steep Side Slope	S 12°32'54" E	30.00'
4	Set 3/4" x 18" Iron Rod In Fence Line	S 82°45'16" W	171.78'



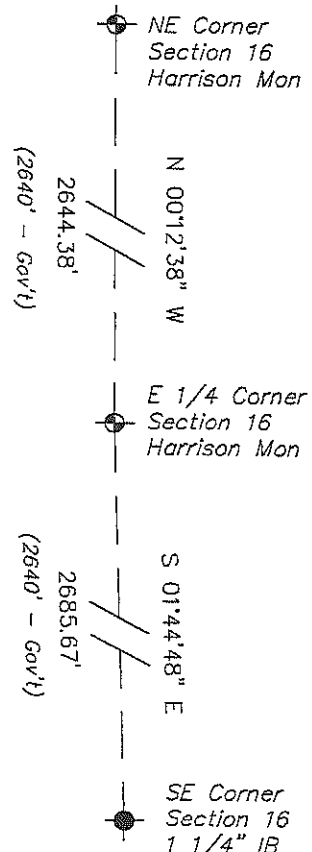
PLAN VIEW DRAWING OF REFERENCE TIES

Map Showing Distance And Direction To Other Public Land Survey
Corners Used For Re-Establishing The Corner



I, Laurence E Johns III RLS 2804, Registered Land Surveyor, hereby certify that the corner location shown on this record was determined by me or under my direction and control, and that this U.S. Public Land Survey Monument Record is correct and complete to the best of my knowledge and belief.

Laurence E. Johns III
 Laurence E Johns III RLS 2804
 Eagle Ridge Surveying, LLC
 PO Box 213
 Wilton, Wisconsin
 15 September 2013



IN SEPTEMBER OF 2014, I VISITED THIS CORNER AND FOUND A DISTURBED IRON BAR AT A NEW FENCE CORNER. WE STRAIGHTENED THE IRON BAR AND RETRAVERSED INTO IT FROM OUR 2007 NOTES. IT FIT WITHIN 0.02' FROM OUR PREVIOUS 2007 SURVEY.

SOMETIME IN NOVEMBER 2014, LAWRENCE JOHNS DELIVERED A TIE SHEET FOR RECORDING DATED SEPT. 15, 2013 WHERE HE STATES HE SET A HARRISON MONUMENT.

HOWEVER, WHEN WE VISITED THIS CORNER IN SEPT OF 2014, WE FOUND A $\frac{3}{4}$ " ROUND IRON BAR. THERE WAS NO HARRISON AND OF COURSE HAD NO EXISTING TIE SHEET OF RECORD PREVIOUS TO MY RECORDED TIE SHEET DATED SEPTEMBER 11, 2014. WE SET A BRASS CAPPED 1" IRON PIPE OVER A $\frac{3}{4}$ " X 6' SQUARE IRON BAR AND SET A SURVEY SIGN 2' NORTH.

Gay J. Dechant
COUNTY SURVEYOR
S-1744

December 15, 2014