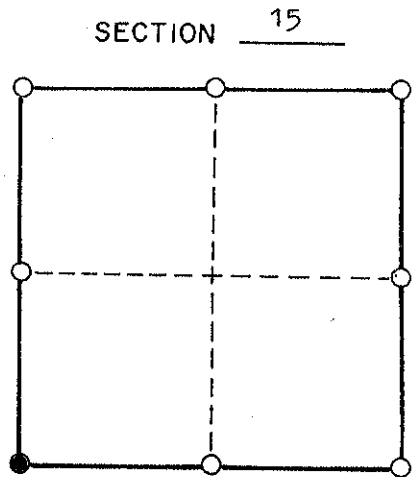
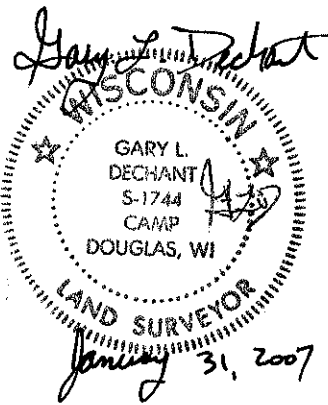


21501160000

CERTIFIED LAND CORNER

I do hereby certify that on the 31st day of January, 2007, I found (evidence) (no evidence) of the SW corner of Section 15, T 15 N, R 1 W, Fourth Principal Meridian, and I re-established said corner according to the Wisconsin Statutes as shown and described hereon.



SECTION 15
● = CORNER LOCATION
T 15 N R 1 W
TOWN OF: Wellington

Witnesses to corner location:

Zachariah P. Dechant

Gary L. Dechant

HISTORY OF CORNER:

L. Feddersen shows a computed corner in Vol 3 CSM P 236.
P. Carroll shows a 1/4" Iron bar in Vol. 20 CSM P. 12.

DESCRIPTION OF CORNER EVIDENCE FOUND:

Accepted fence corner as the SW corner of Section 15 as it best fits other evidence found. This location best fits evidence and occupation for lands as recorded in Vol. 30 D., P. 462. The SW corner of the SE 1/4-SW 1/4 fits north-south fence basically perfect.

See CSM dated Jan. 30, 2007.

NOTE: Occupation by fence versus true corner location in the interior of

DESCRIPTION OF CORNER AND WITNESS MARKERS:

the section are very different.

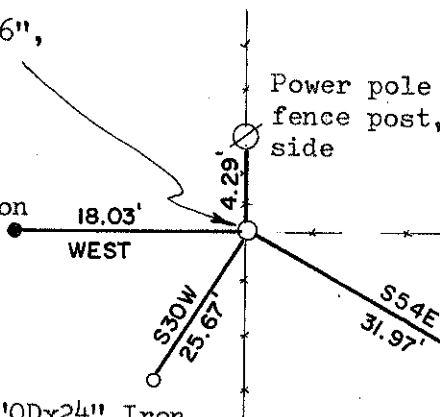
Set 1/4"x6' Steel shaft, up 6", set survey sign 1' south.

Existing 1/4" Round Iron Bar set by Carroll (shown as 1" I.B.)

Set 1"ODx24" Iron Pipe SW of rock

Power pole cut off, now used as fence post, set 40d nail on east side

Set 1"ODx24" Iron Pipe SE of rock



MONROE COUNTY

Survey Monument Record

TYPE OF MONUMENT: 1" x 24" IRON BAR SET

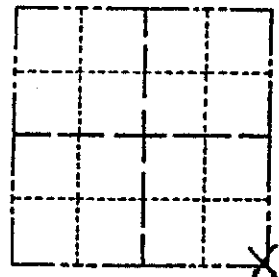
STATE PLANE COORDINATES: N _____ E _____

ELEVATION -- M.S.L. DATUM: _____

THETA ANGLE: _____

FIELD BOOK: _____ PAGE _____

CORNER NO. 67
SECTION 16
TOWN 15N
RANGE R1W
WELLINGTON



LOCATION (Indicated by 'X')

BASIS FOR MONUMENT LOCATION

(Use reverse side if necessary)

Show info such as: History of corner, with reference to Vol. and pg. dates, surveyor; exact description of monument replaced; if location computed, by taped or EDM traverse; landowner remarks, etc.

No physical evidence in area of corner location. Therefore I doubled the distance from the SW corner (Harrison F.I.P.) through the existing fenced forty corner 1/4 mile east to set the SE corner of Section 16.

SEAL:



CERTIFIED CORRECT:

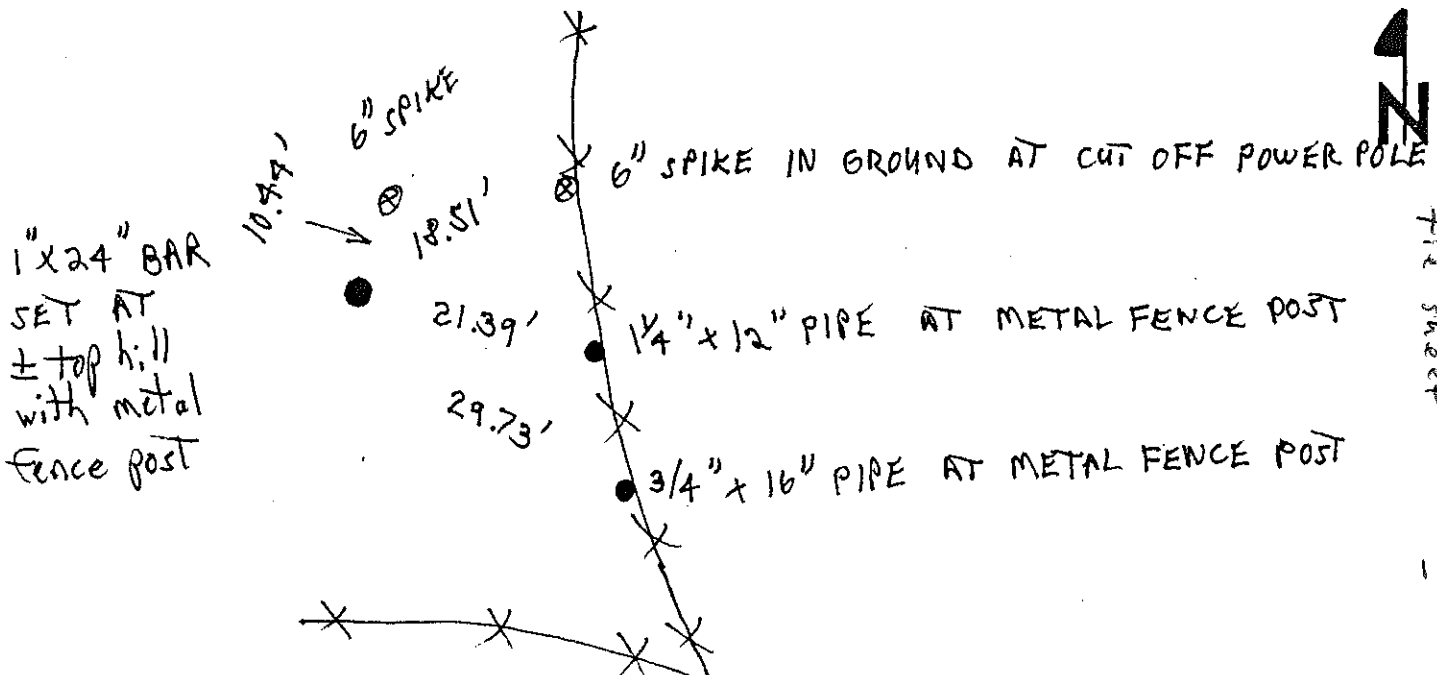
Patrick A. Carroll

Registered Land Surveyor

DATE: 5/22/06

TIE SKETCH

(Show at least four ties)



See Deed sheet tie sheet