

CERTIFICATE

CERTIFIED LAND CORNER

No. 58

21501152000

I, Gary L. Dechant, do hereby certify that on the 31st day of August 2004, I found (evidence) (~~no evidence~~) of the W/4 corner of Sec. 14, T 15 N, R 1 W Fourth Principal Meridian, and I re-established said corner according to the Wisconsin Statutes as shown and described hereon.

Dated this 31st day of Aug. 2004.

Gary L. Dechant

RLS 1744

Title

History of corner establishment since Original Government Survey

A.S. Ingalls did a road survey in Section 14 in 1873, and may have been at this corner at that time. W. Jung on his certified land corner sheet for the E¹/₄ corner of Section 14, refers to an unrecorded survey by LaRue by testimony of the Wurster's. It is possible LaRue was at this corner also.

Description of corner evidence found:

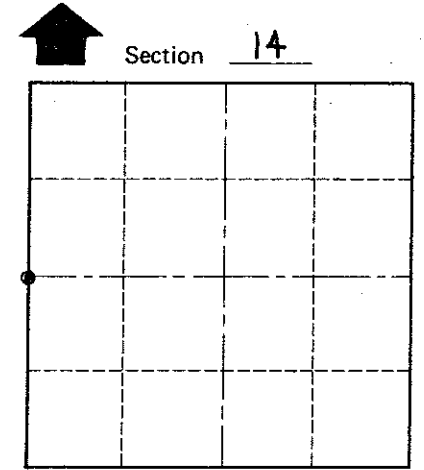
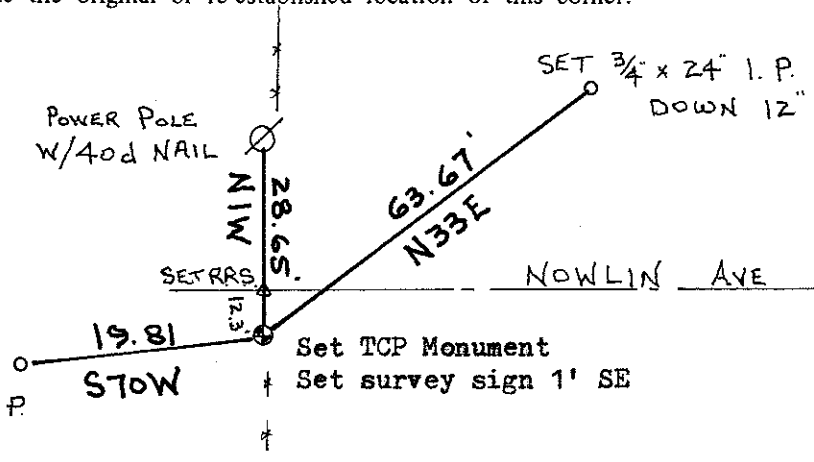
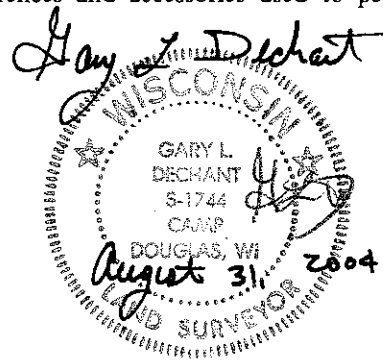
Found an unrecorded iron pipe, bent, down 8" and accepted as the corner. Fits very well with north south fences.
Replaced bent iron pipe with Cast Iron TCP Monument.

Description of corner and witness monuments, references and accessories used to perpetuate the original or re-established location of this corner:

Witnesses to corner location:

Zachariah P. Dechant

Gary L. Dechant



O = LOCATION CORNER

T 15 N R 1 W

WISCONSIN

APPROX. 10' E OF LINE
LARGE WHITE OAK

SURVEY CONTROL ORDER

Horizontal	_____
Vertical	_____

WISCONSIN COORDINATE SYSTEM

Corner	East (X)	North (Y)	Elevation (Z)	Zone
Control Sta. Name				

City, Village or Town WELLINGTON

County of MONROE

COUNTY SURVEYOR FORM NO. 1