

21501140020

I, William C. Jung, do hereby certify that on the 7th day of September 1982, I found (evidence) ~~of the~~ of the North 1/4 corner of Section 23, T 15 N, R 1 W Fourth Principal Meridian, and I re-established said corner according to the Wisconsin Statutes as shown and described hereon.

Dated this 25th day of Jan. 1983.

William C. Jung

Deputy County Surveyor

Title

History of corner establishment since Original Government Survey
A.S. Ingalls set an iron at this corner in 1874. LaRue re-established this corner in April of 1900. Holden found an iron stake at the corner in May of 1901. He verified this as the original corner and as Ingalls' corner. Holden shows a stone at this corner in his notes of June, 1910.

Description of corner evidence found:

I found Ingalls' and Holden's corner, and also (1) of Holden's new bearing trees. I did not find a stone. The road was very hard to dig in. My distance from this corner to my section corner at the NE of Section 23 matches Holden's distance within 0.53'. There is and was obviously a serious problem with this corner, but it definitely is the original government corner and cannot be disputed.

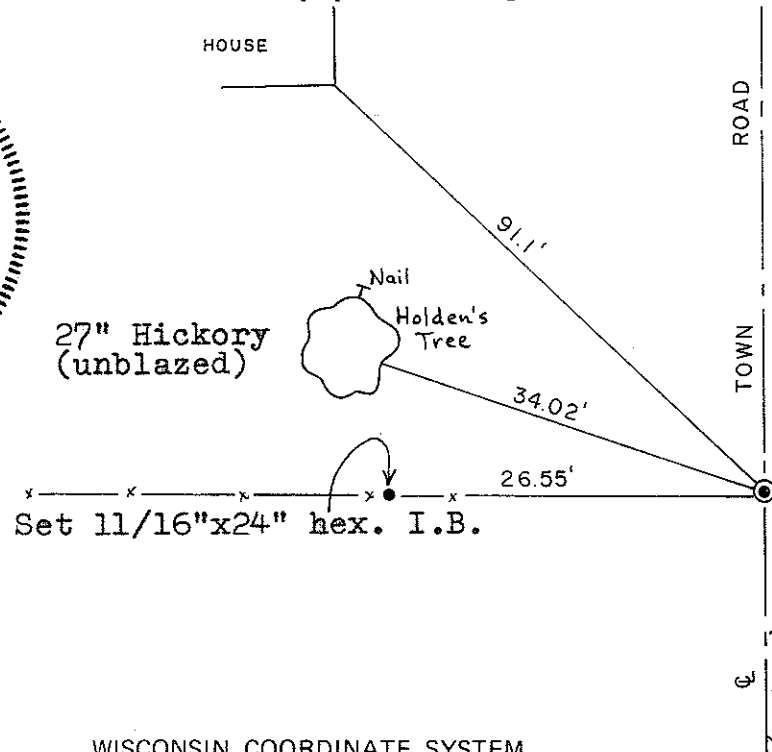
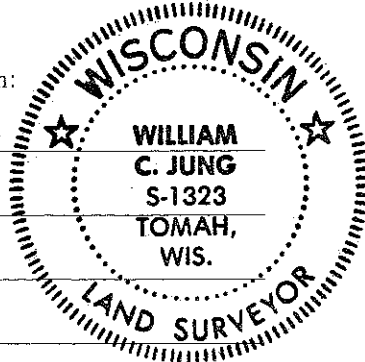
COUNTY SURVEYOR FORM NO. 1

Description of corner and witness monuments, references and accessories used to perpetuate the original or re-established location of this corner:

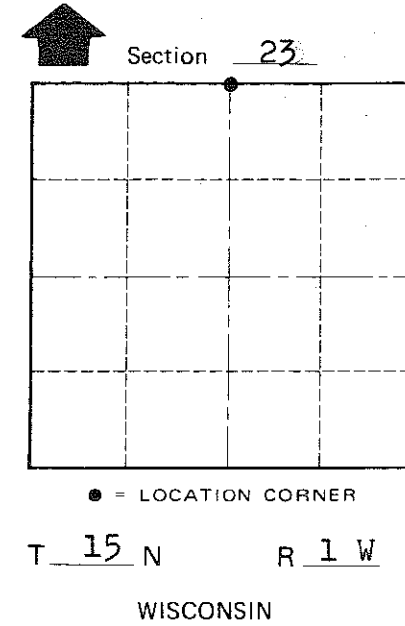
Witnesses to corner location:

William C. Jung

Melvin Pliner



Found sleigh shoe, down 6"+ which is the corner. Set 1 1/4"x30" I.B. and round locking gear on S. side of the sleigh shoe. The latter are witness points. Did not find stone.



Approved: **HARLEY A. SIME**
MONROE CO. SURVEYOR

SURVEY CONTROL ORDER

Horizontal	_____
Vertical	_____

WISCONSIN COORDINATE SYSTEM

Corner	East (X)	North (Y)	Elevation (Z)	Zone
Control Sta. Name				

~~City, Village or~~ Town of Wellington

County of Monroe