

I, William C. Jung, do hereby certify that on the 27th day of September 1982, I found (evidence) ~~(no evidence)~~ of the Northwest corner of Section 19, T 15 N, R 1 E Fourth Principal Meridian, and I re-established said corner according to the Wisconsin Statutes as shown and described hereon.

Dated this 26th day of Jan. 1983.

William C. Jung

Deputy County Surveyor
Title

History of corner establishment since Original Government Survey

None recorded since the original government survey.

Description of corner evidence found:

I set this corner at a computed location so as to best fit the existing occupied conditions in all (4) cardinal directions. This location matches the field evidence extremely well.

UPDATE: This corner was perpetuated from ties taken prior to road construction. Set a new monument, as indicated below, in bituminus pavement at the corner. New ties taken as illustrated below.

Douglas J. Malliet, R.L.S. #1266
28 October 1996

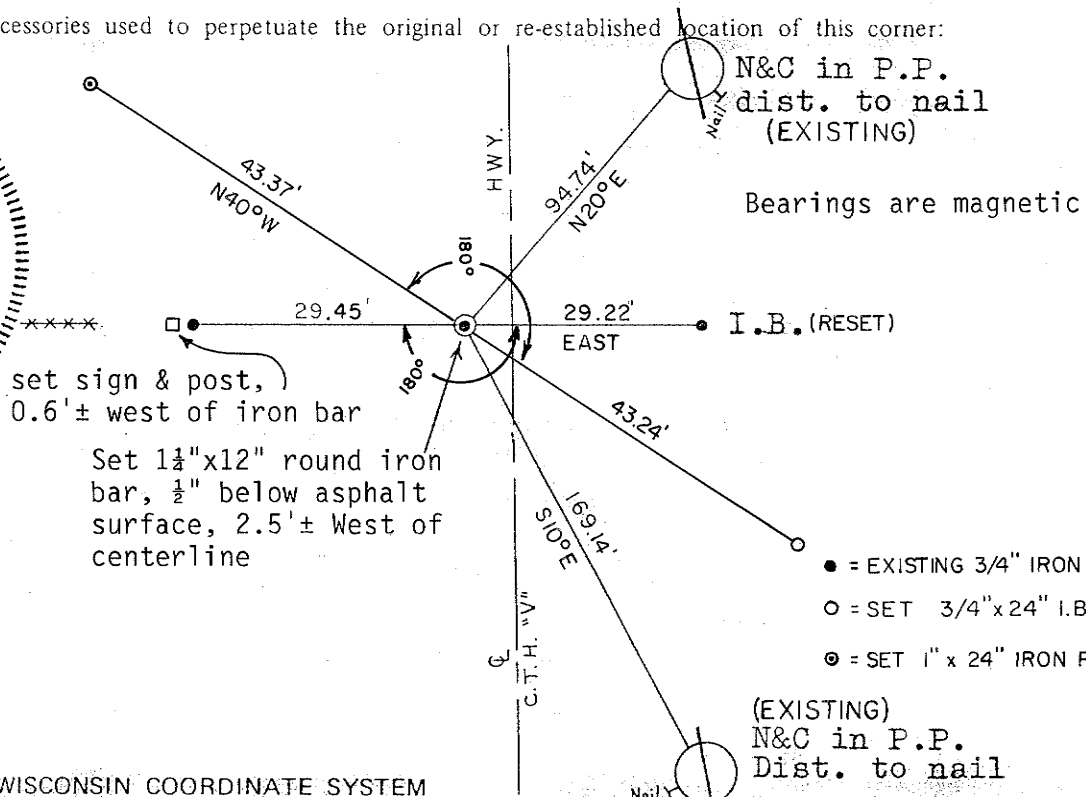
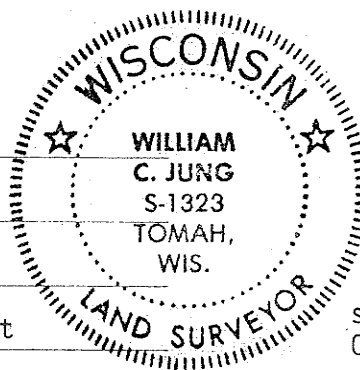
Description of corner and witness monuments, references and accessories used to perpetuate the original or re-established location of this corner:

Witnesses to corner location:

William C. Jung

Melvin Pliner

CREW: Douglas J. Malliet
Matthew Schrieber
28 October 1996



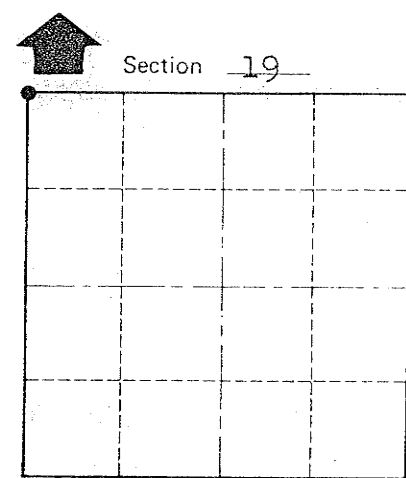
N&C in P.P.
dist. to nail
(EXISTING)

Bearings are magnetic

I.B. (RESET)

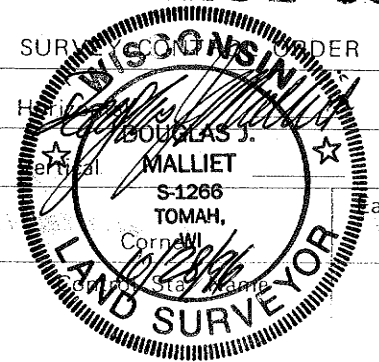
- = EXISTING 3/4" IRON BAR
- = SET 3/4" x 24" I.B.
- ⊙ = SET 1" x 24" IRON PIPE

(EXISTING)
N&C in P.P.
Dist. to nail



● = LOCATION CORNER
T 15 N R 1 E
WISCONSIN

Approved: **HARLEY A. SIME**
MONROE CO. SURVEYOR



WISCONSIN COORDINATE SYSTEM

East (X)	North (Y)	Elevation (Z)	Zone

City, Village or Town of Glendale

County of Monroe

4409

COUNTY SURVEYOR FORM NO. 1

21501130000

I, William C. Jung, do hereby certify that on the 27th day of September 1982, I found (evidence) ~~(no evidence)~~ of the Northwest corner of Section 19, T 15 N, R 1 E Fourth Principal Meridian, and I re-established said corner according to the Wisconsin Statutes as shown and described hereon.

History of corner establishment since Original Government Survey

None recorded since the original government survey.

Description of corner evidence found:

I set this corner at a computed location so as to best fit the existing occupied conditions in all (4) cardinal directions. This location matches the field evidence extremely well.

Dated this 26th day of Jan. 1983.

William C. Jung

Deputy County Surveyor
Title

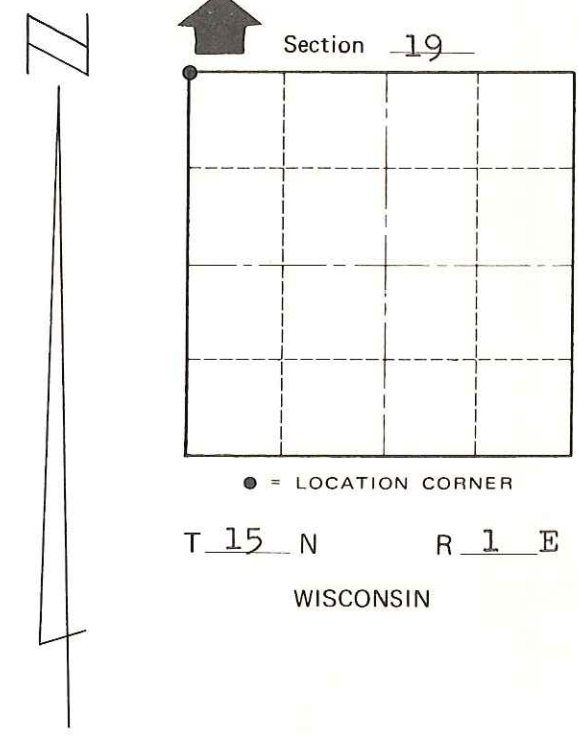
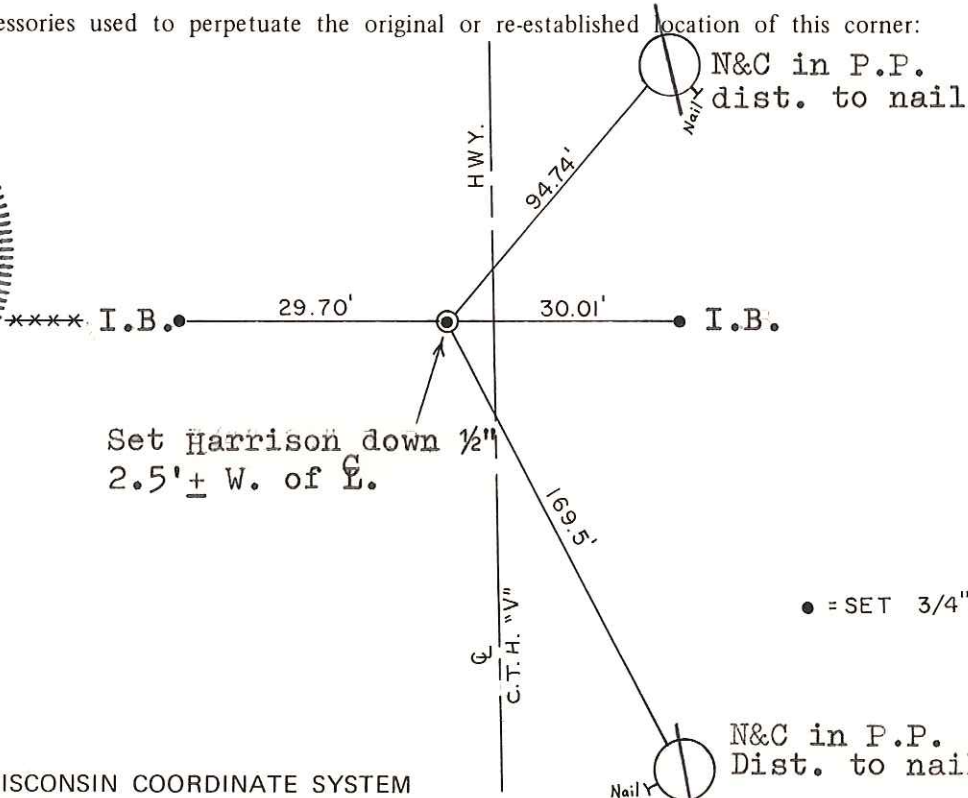
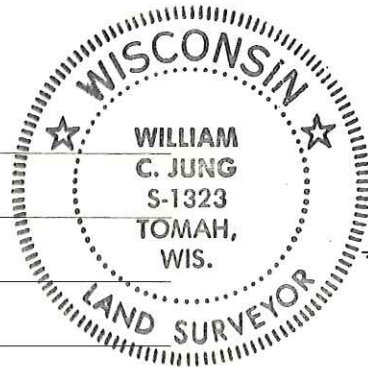
COUNTY SURVEYOR FORM NO. 1

Description of corner and witness monuments, references and accessories used to perpetuate the original or re-established location of this corner:

Witnesses to corner location:

William C. Jung

Melvin Pliner



Approved: **HARLEY A. SIME**
MONROE CO. SURVEYOR

SURVEY CONTROL ORDER

Horizontal	_____
Vertical	_____

WISCONSIN COORDINATE SYSTEM

Corner	East (X)	North (Y)	Elevation (Z)	Zone
Control Sta. Name				

~~City, Village or~~ Town of Glendale
County of Monroe