

# 42

# U.S. PUBLIC LAND CORNER MAINTENANCE

Corner ID : S1/4 Sec.12, T15N-R1W

21501120020

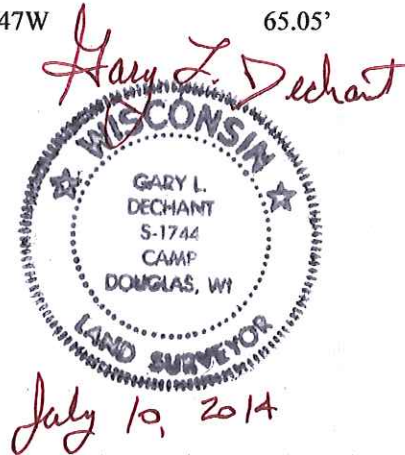
| <u>DATE</u>   | <u>CREW</u>                            | <u>MONUMENT TYPE</u> -----   |
|---------------|--|--|
| July 10, 2014 | Zachariah P.Dechant<br>Gary L. Dechant | Found Harrison in tact in centerline CTH "V"<br>on line with fence running east, 9' north of fence<br>running west |

References:

|  | <u>Bearing</u> | <u>Distance</u> |
|--|----------------|-----------------|
| 1) Set 3/4"x24" hex iron bar, down 8", 6' north of fence, in pasture | N77E           | 38.86'          |
| 2) Set 3/4"x 24" hex iron bar, down 8", in lawn, north of driveway   | S47E           | 49.26'          |
| 3) Set 3/4"x24" hex iron bar, 4' south of fence, down 8"             | S77W           | 51.59'          |
| 4) Set 3/4"x24" hex iron bar, down 8" in pasture                     | N47W           | 65.05'          |

**NOTE:** Harrison and reference markers  
set on straight lines.

**COORDINATES:**



I, William C. Jung, do hereby certify that on the 18th day of October 1982, I found (evidence) ~~no evidence~~ of the North 1/4 corner of Section 13, T15 N, R 1 W Fourth Principal Meridian, and I re-established said corner according to the Wisconsin Statutes as shown and described hereon.

Dated this 25th day of Jan. 1983.

William C. Jung

Deputy County Surveyor

Title

History of corner establishment since Original Government Survey

In an 1873 road survey as recorded in the Town Road Records, this corner is called for as being in the road centerline. In November of 1971, Fred Zietlow set a R.R. spike at this corner.

Description of corner evidence found:

After surveying out most of Section 13, I feel that Zietlow's R.R. spike at the occupied corner is the best available evidence of the original government corner and as such I accepted it's location. This point fits the field evidence along the mile to the South and the 1/2 mile to the East very well.

**See Reverse Side For Maintenance**

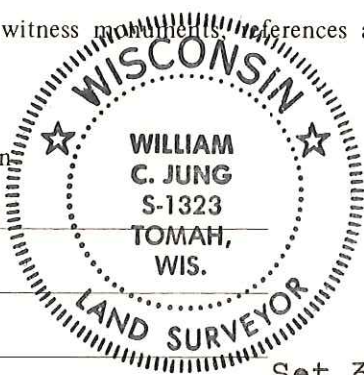
COUNTY SURVEYOR FORM NO. 1

Description of corner and witness monuments, references and accessories used to perpetuate the original or re-established location of this corner:

Witnesses to corner location

William C. Jung

Melvin Pliner



Set 3/4"x24" I.B. →

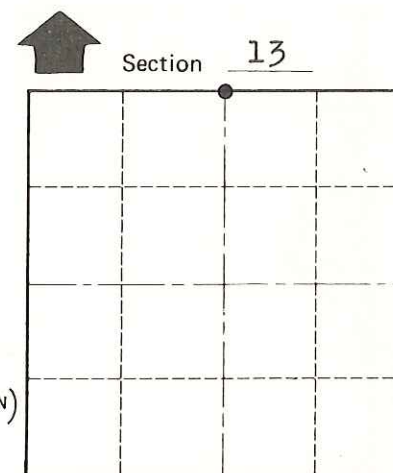
← Pasture Fence

Found old stump. I do not believe it is the org. B.T.

Set 3/4"x24" iron bar, 11" West of fence post

Removed R.R. Spike and set Harrison, down 1/2"

To N&C on N.W. side of pole



● = LOCATION CORNER

T 15 N R 1 W  
WISCONSIN

**Approved: HARLEY A. SIME  
MONROE CO. SURVEYOR**

SURVEY CONTROL ORDER

|            |       |
|------------|-------|
| Horizontal | _____ |
| Vertical   | _____ |

| Corner            | East (X) | North (Y) | Elevation (Z) | Zone |
|-------------------|----------|-----------|---------------|------|
| Control Sta. Name |          |           |               |      |

WISCONSIN COORDINATE SYSTEM

City, Village or Town of Wellington

County of Monroe