

43

**U.S. PUBLIC LAND CORNER
MAINTENANCE**

**Corner ID : NW Sec.13, T15N-R1W
21501110000**

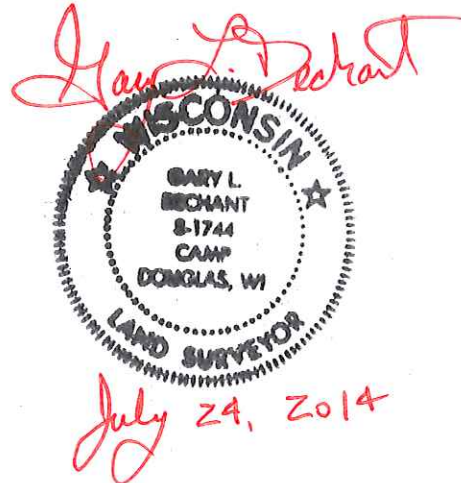
<u>DATE</u>	<u>CREW</u>	<u>MONUMENT TYPE -----</u>
July 24, 2014	Zachariah P.Dechant Gary L. Dechant	Found Harrison in tact. Placed concrete, with 6' anchor, around Harrison at fence corner.

References:

- 1) Set 3/4"x24" hex iron bar
- 2) Set 3/4"x 24" hex iron bar
- 3) Set 3/4"x24" hex iron bar
- 4) Set 3/4"x24" hex iron bar

<u>Bearing</u>	<u>Distance</u>
S70E	21.93
S21E	33.68'
S74W	28.33'
N46W	13.69'

COORDINATES:



I, William C. Jung, do hereby certify that on the 14th day of April 1983, I found (evidence) ~~(no evidence)~~ of the Southeast corner of Section 11, T 15 N, R 1 W Fourth Principal Meridian, and I re-established said corner according to the Wisconsin Statutes as shown and described hereon.

History of corner establishment since Original Government Survey

In his notes of November, 1901, Fred Holden shows an iron bar at this corner.

**See Reverse Side
For Maintenance**

Description of corner evidence found:

Dated this 14th day of April 1983.

I found Holden's iron bar at the corner. I also found the remains of one of his bearing trees, the elm to the Southwest. This old elm stump fits his bar very good considering the size and shape of the old stump. I removed the bar and replaced it with a Harrison marker.

William C. Jung

Deputy County Surveyor, R.L.S. 1323

**Approved: HARLEY A. SIME
MONROE CO. SURVEYOR**

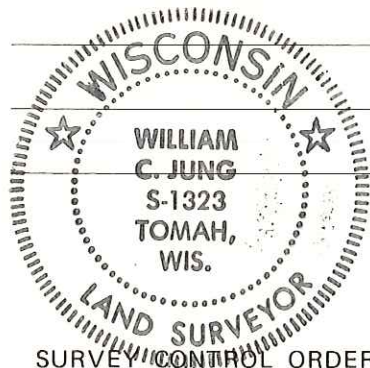
COUNTY SURVEYOR FORM NO. 1

Description of corner and witness monuments, references and accessories used to perpetuate the original or re-established location of this corner:

Witnesses to corner location:

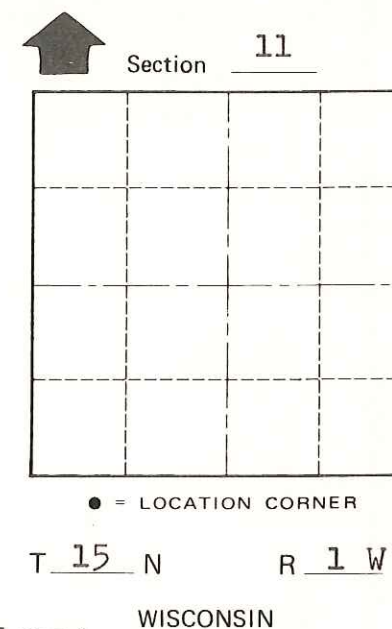
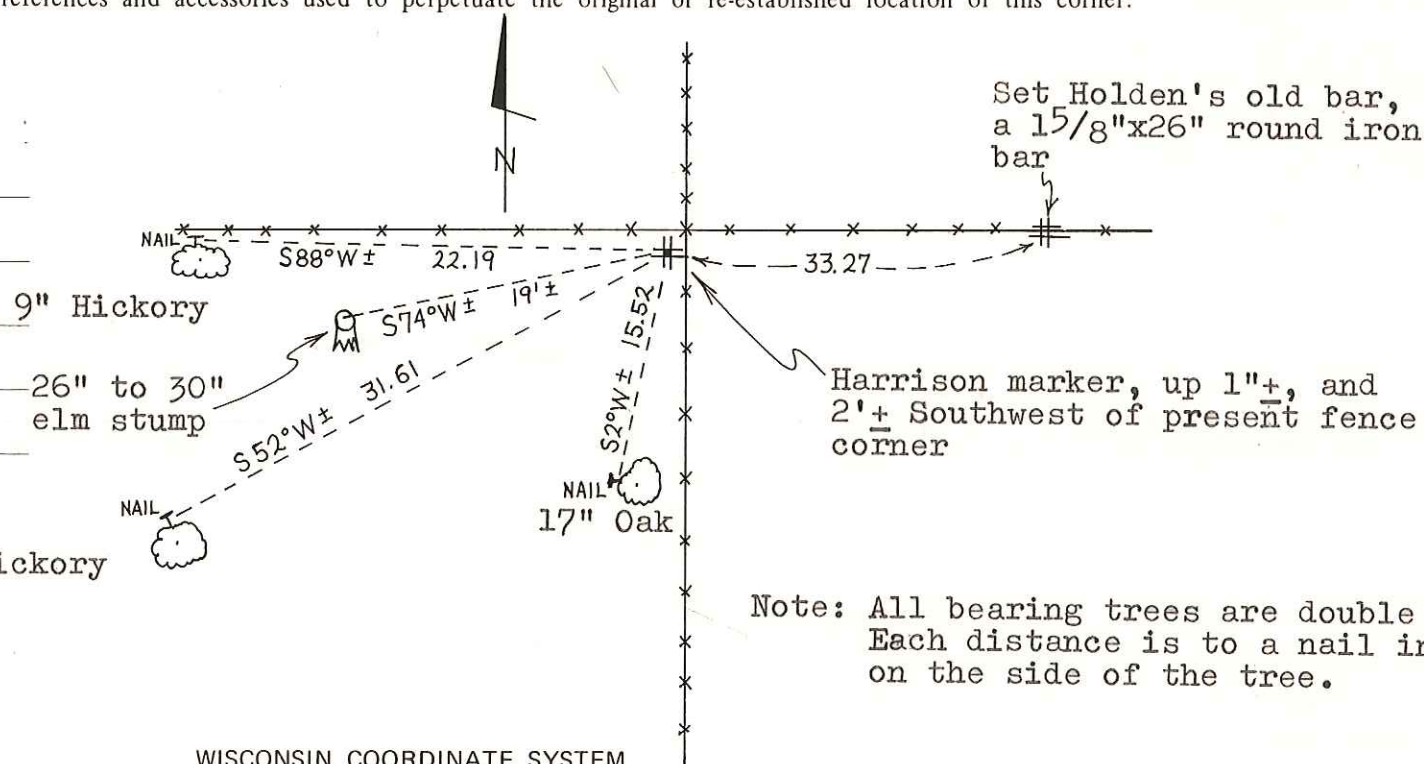
William C. Jung

Dallas Wilhite



SURVEY CONTROL ORDER

Horizontal	_____
Vertical	_____



Note: All bearing trees are double blazed. Each distance is to a nail in a hack on the side of the tree.

WISCONSIN COORDINATE SYSTEM				
Corner	East (X)	North (Y)	Elevation (Z)	Zone
Control Sta. Name				

City, Village or Town Wellington
County of Monroe
Wisconsin