

I, Harley A. Sime, do hereby certify that on the 10th day of November 1980, I found (evidence) ~~(no evidence)~~ of the Center 1/4 corner of Section 10, T 15 N, R 1 W Fourth Principal Meridian, and I re-established said corner according to the Wisconsin Statutes as shown and described hereon.

Dated this 10th day of Nov. 19 80.

Harley A. Sime

County Surveyor
Title

History of corner establishment since Original Government Survey

Frank Davy was here in November of 1926, and set a concrete post.

Description of corner evidence found:

Found Davy's concrete post at fence corner.

Description of corner and witness monuments, references and accessories used to perpetuate the original or re-established location of this corner:

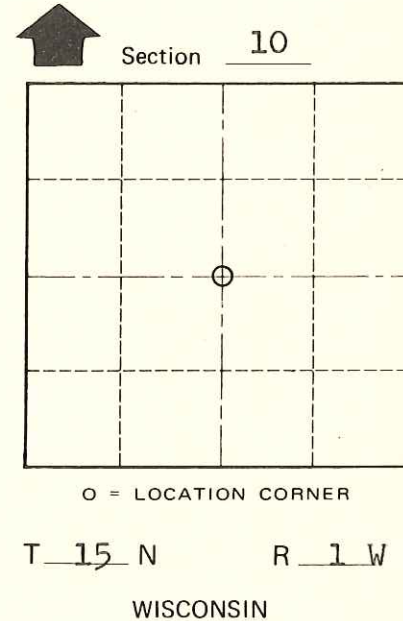
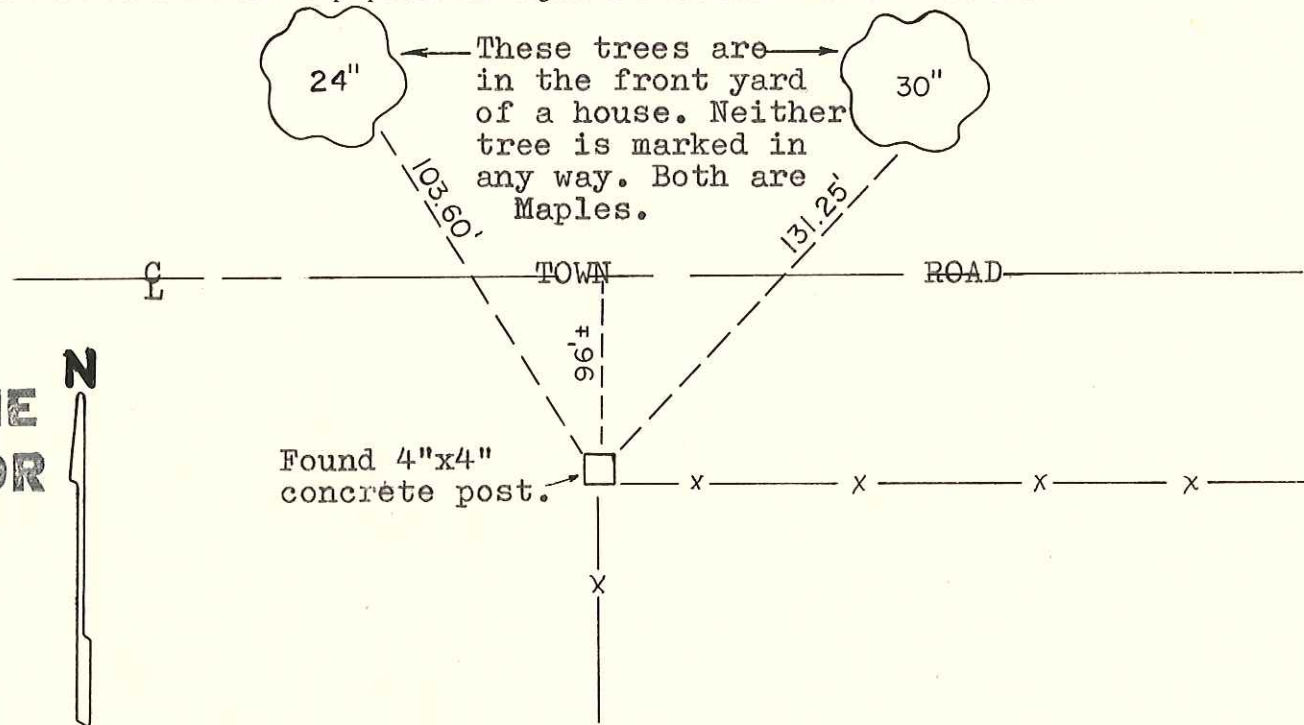
Witnesses to corner location:

Bryan Meyer

Scott Sowers

COUNTY SURVEYOR FORM NO. 1

**Approved: HARLEY A. SIME
MONROE CO. SURVEYOR**



SURVEY CONTROL ORDER

Horizontal	_____
Vertical	_____

WISCONSIN COORDINATE SYSTEM

Corner	East (X)	North (Y)	Elevation (Z)	Zone
Control Sta. Name				

City, Village or Town of Wellington

County of Monroe
Wisconsin