

21501082000

I, Gary L. Dechant, do hereby certify that on the 28th day of September 1995, I found (evidence) (no evidence) of the E/4 corner of Section 8, T 15 N, R 1 W Fourth Principal Meridian, and I re-established said corner according to the Wisconsin Statutes as shown and described hereon.

History of corner establishment since Original Government Survey

Fred Holden was here in 1902 and shows two bearing trees.

Description of corner evidence found:

Found Holden's White Pine bearing tree. Set corner at his recorded bearing and distance from the tree. Tree is now dead but standing.

Dated this 21st day of Oct. 1995.

Gary L. Dechant

R.L.S. 1744

Title

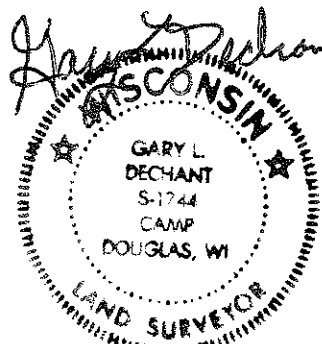
COUNTY SURVEYOR FORM NO. 1

Description of corner and witness monuments, references and accessories used to perpetuate the original or re-established location of this corner:

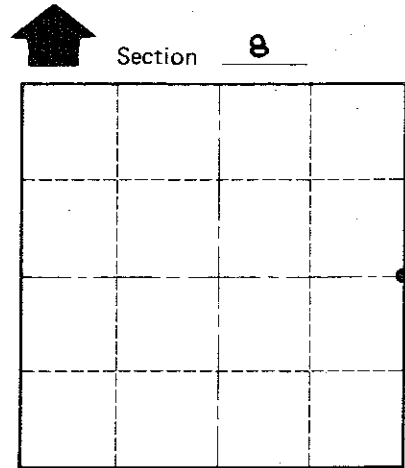
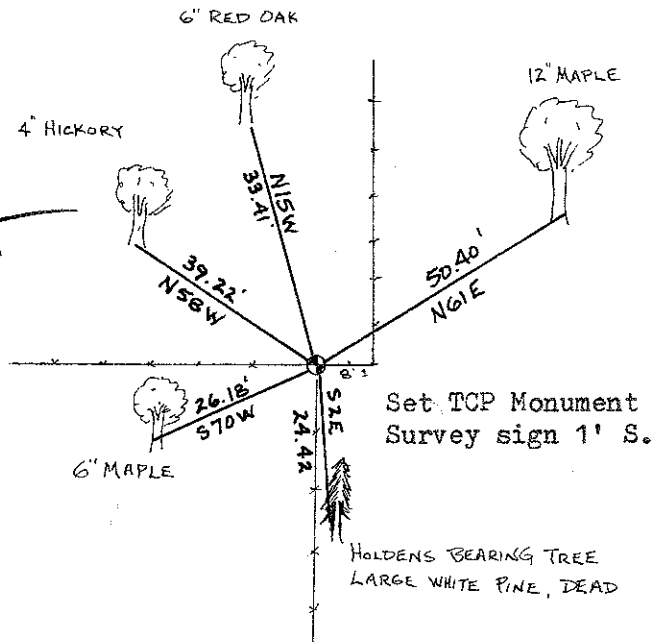
Witnesses to corner location:

David E. Madison

Gary L. Dechant



October 21, 1995



• = LOCATION CORNER

T 15 N R 1 W

WISCONSIN

(Trees double blazed with 20d nails set)

SURVEY CONTROL ORDER

Horizontal _____
Vertical _____

WISCONSIN COORDINATE SYSTEM

Corner	East (X)	North (Y)	Elevation (Z)	Zone
Control Sta. Name				

City, Village or Town WELLINGTON

County of MONROE