

CERTIFICATE

CERTIFIED LAND CORNER

No. 31

21501060000

I, William C. Jung, do hereby certify that on the twenty-fourth day of June 1981, I found (evidence) of the Southeast corner of Section 6, T 15 N, R 1 W, Fourth Principal Meridian, and I re-established said corner according to the Wisconsin Statutes as shown and described hereon.

Dated this 2nd day of Sept. 1981.

William C. Jung

Registered Land Surveyor 1323

History of original corner establishment:

Hamilton LaRue shows this corner to be existing in surveys done in January and February of 1897. In December of 1902, Holden shows a stake at this corner and a bearing tree from one of Ingalls' surveys. Harley Sime shows an iron pipe at this corner in a survey done in November of 1961.

Description of corner evidence found:

I accepted the existing iron pipe used in a previous survey as the best available evidence of the government corner. I did not put in a Harrison as the pipe is very solid and in good condition.

Approved: HARLEY A. SIME MONROE CO. SURVEYOR

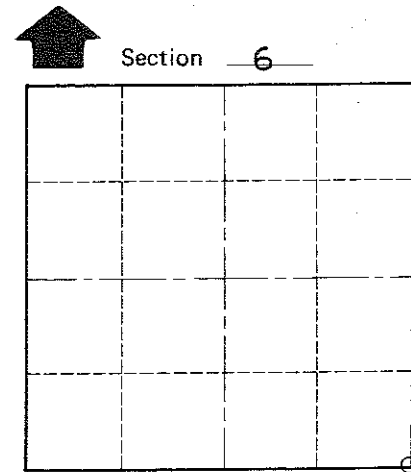
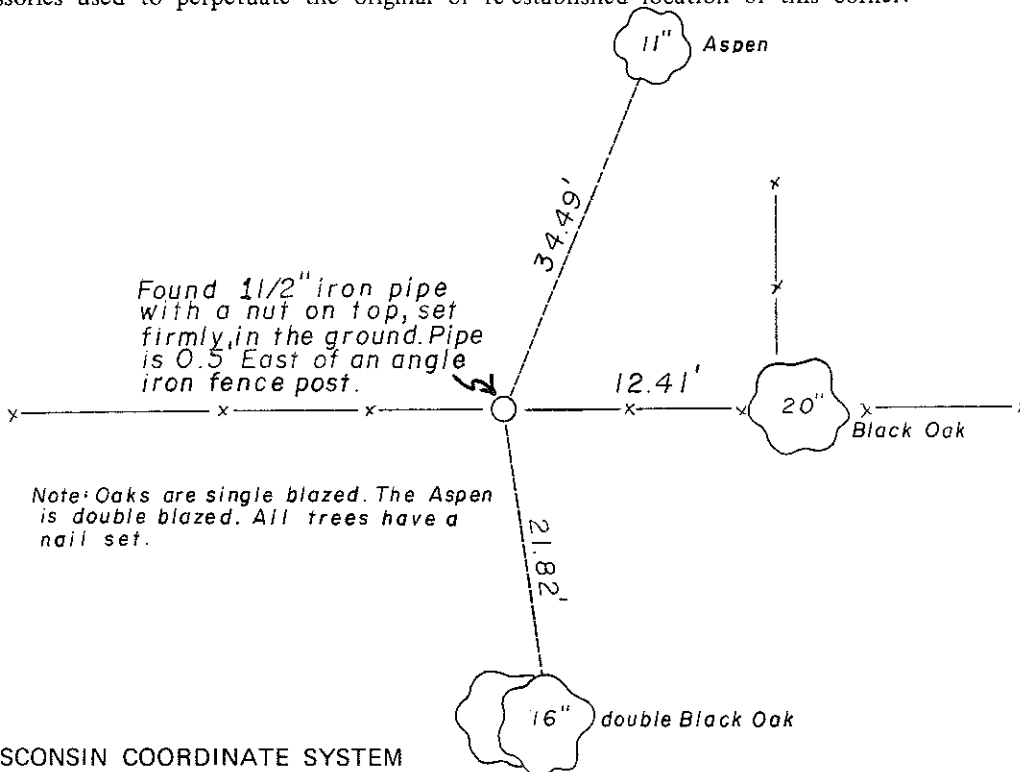
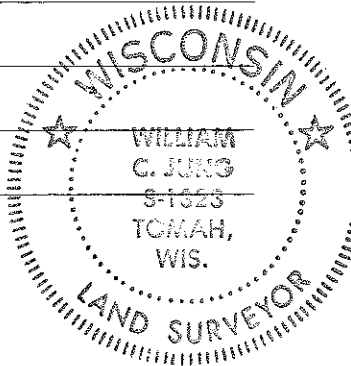
COUNTY SURVEYOR FORM NO. 1

Description of corner and witness monuments, references and accessories used to perpetuate the original or re-established location of this corner:

Witnesses to corner location:

William C. Jung

Carlton R. Pietz



O = LOCATION CORNER T 15 N R 1 W WISCONSIN

SURVEY CONTROL ORDER

Table with 2 rows: Horizontal, Vertical.

WISCONSIN COORDINATE SYSTEM

Table with 5 columns: Corner, East (X), North (Y), Elevation (Z), Zone. Row 1: Control Sta. Name.

Town of Wellington County of Monroe