

21501052000

I, Ronald D. Parish, do hereby certify that on the 28th day of December 1988, I found ~~(evidence)~~ (no evidence) of the West 1/4 corner of Section 4, T 15 N, R 1 W. Fourth Principal Meridian, and I re-established said corner according to the Wisconsin Statutes as shown and described hereon.

Dated this 30th day of Dec. 1988.

Ronald D. Parish
Registered Land Surveyor
Title

History of corner establishment since Original Government Survey

S.S. Ingalls was here in May of 1873.

Description of corner evidence found:

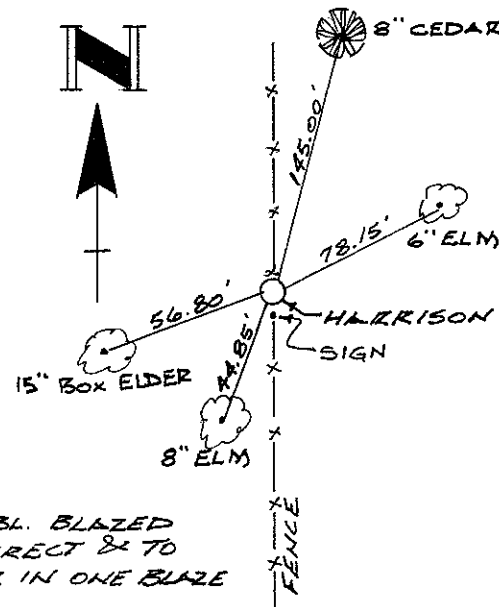
Could find no evidence of the corner and very few trees remain in this area. Set corner at intersection of the East-West 1/4 line fence projected Westerly and a North-South fence line. This does not fit Ingalls dimensions or the Original Government Survey very well, but this line starts from the Northwest corner on a very steep hillside, crosses up over a nearly vertical bluff, down another very steep bluff to the valley below.

Description of corner and witness monuments, references and accessories used to perpetuate the original or re-established location of this corner:

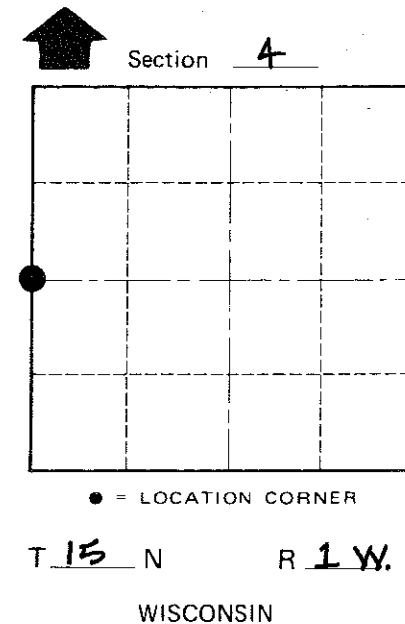
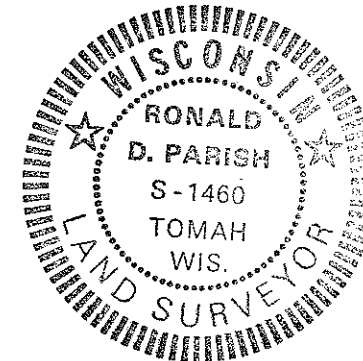
Witnesses to corner location:

Ronald D. Parish

Richard Brueggen



ALL TREES DBL. BLAZED
ALL MEAS. DIRECT & TO
NAIL W/SHINER IN ONE BLAZE



COUNTY SURVEYOR FORM NO. 1

SURVEY CONTROL ORDER

Horizontal _____
Vertical _____

WISCONSIN COORDINATE SYSTEM

Corner	East (X)	North (Y)	Elevation (Z)	Zone
Control Sta. Name				

City, Village or Town WELLINGTON
County of MONROE