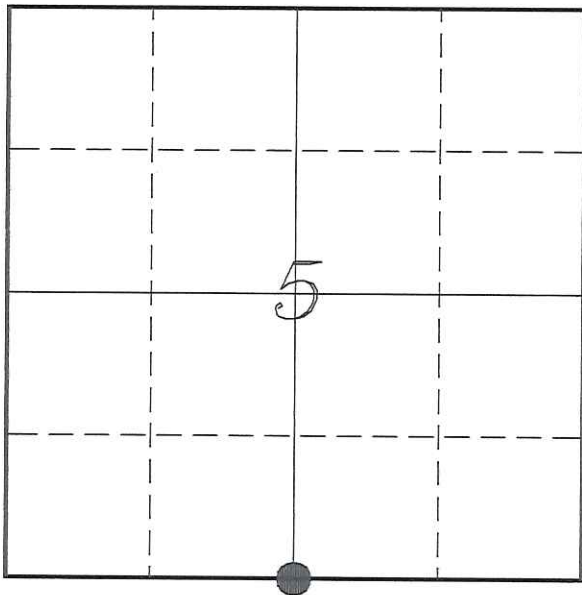


U. S. PUBLIC LAND SURVEY MONUMENT RECORD

SECTION 5, T15N, R1W, TOWN OF WELLINGTON
 MONROE COUNTY, WISCONSIN



LOCATION OF LANDMARK

MONROE COUNTY COORDINATE SYSTEM	
Northing	326275.973
Easting	702377.963
Datum	NAD 1983 (1991)
Elevation	
Datum	
TYPE OF LANDMARK:	
Set Harrison Monument	
BEARINGS ARE REFERENCED TO:	
Monroe County Coordinates	

Witnesses: Laurence E Johns III

Date: 13 September 2013

Describe any record evidence, monument evidence, testimonial evidence or any other material evidence you considered and whether the monument was found or restored through acceptance of an obliterated evidence location.

No bearing trees of record were located.

I found a 1/2" iron rod with a hammer type head attached to it on the East side of a 3-way fence corner. It appeared old and was very stable.

This 1/2" iron rod is 7.1± North and 4.7± East of the mid-point between the SW & SE Corners of the Section.

Though Holden only mentions a 1/2" iron rod, it is possible that this monument is his. It is also located at occupation.

I accepted this monument as the best available evidence of the original government corner and replaced it with a Harrison Monument.

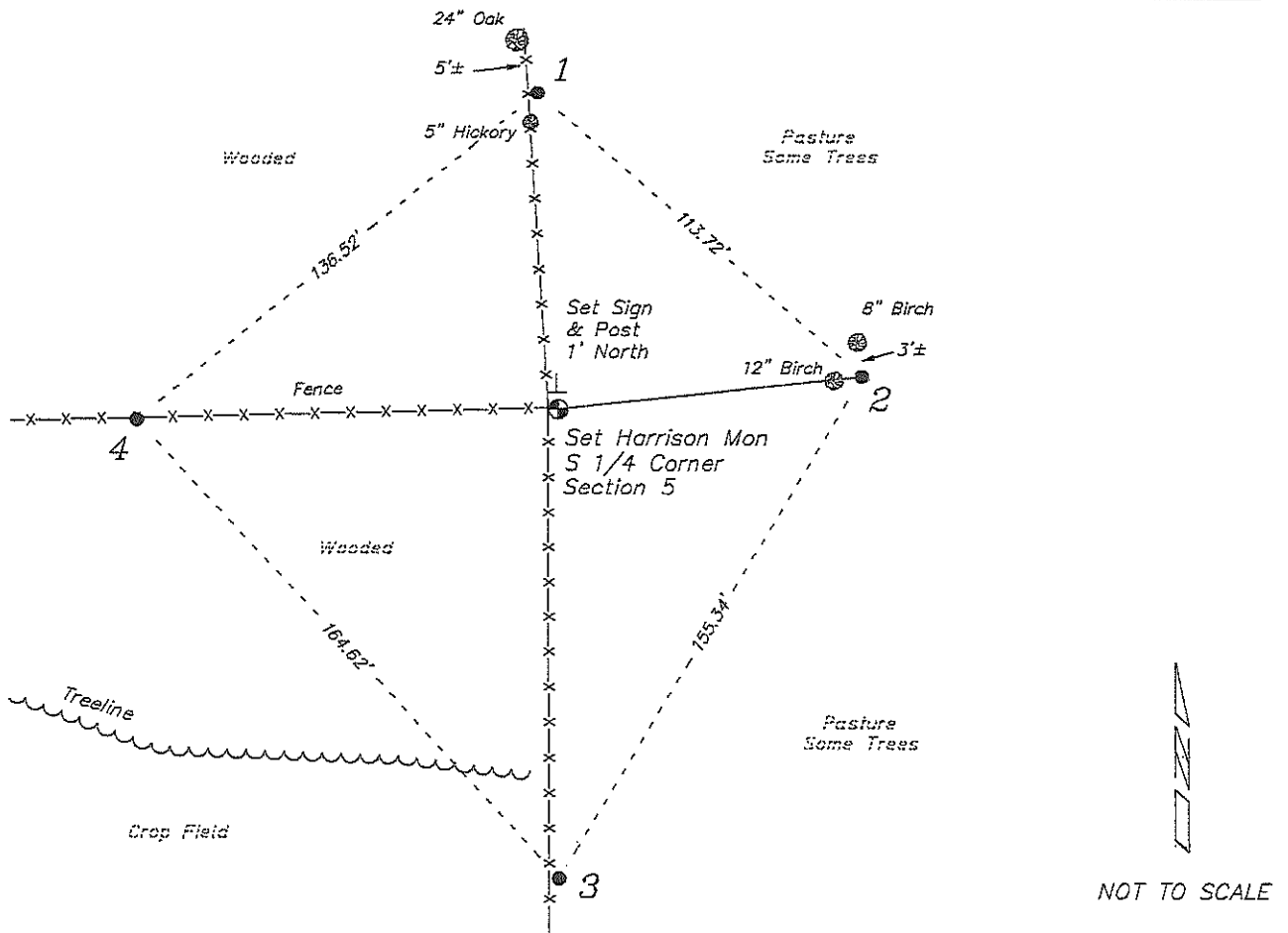
Describe or show any material discrepancy between the location of the restored corner and that of the corner previously restored or re-established.

Alfred Brown established this corner in January 1846.

Fred Holden was at this corner, in December 1902, during a survey in Section 8. He shows he re-established this corner and set a 1/2" iron rod at the corner.

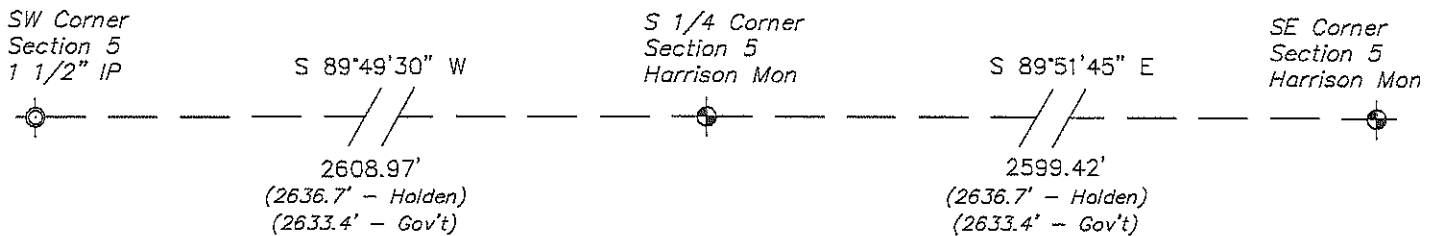
RECORD OF DURABLE WITNESS MONUMENTS

NO	DESCRIPTION	BEARING	DISTANCE
1	Set 3/4" x 18" Iron Rod In Fence - 2' North of a 5" Hickory	N 03°37'32" W	84.23'
2	Set 3/4" x 18" Iron Rod 2' East of a 12" Birch	N 83°45'08" E	80.36'
3	Set 3/4" x 18" Iron Rod In Fence Line	S 00°04'20" E	124.58'
4	Set 3/4" x 18" Iron Rod In Fence Line	S 88°32'18" W	110.67'



PLAN VIEW DRAWING OF REFERENCE TIES

Map Showing Distance And Direction To Other Public Land Survey
Corners Used For Re-Establishing The Corner



I, Laurence E Johns III RLS 2804, Registered Land Surveyor, hereby certify that the corner location shown on this record was determined by me or under my direction and control, and that this U.S. Public Land Survey Monument Record is correct and complete to the best of my knowledge and belief.

Laurence E Johns III
 Laurence E Johns III RLS 2804
 Eagle Ridge Surveying, LLC
 PO Box 213
 Wilton, Wisconsin
 13 September 2013

