

21501042000

I, Ronald D. Parish, do hereby certify that on the 27th day of December 1988, I found ~~(evidence)~~ (no evidence) of the E 1/4 corner of Section 4, T15 N, R 1 W. Fourth Principal Meridian, and I re-established said corner according to the Wisconsin Statutes as shown and described hereon.

Dated this 30th day of Dec. 1988.

Ronald D. Parish  
Registered Land Surveyor  
Title

History of corner establishment since Original Government Survey

S.S. Ingalls was here in May of 1873. He set the Center of Section from straight lines projected from this and other corners.

Description of corner evidence found:

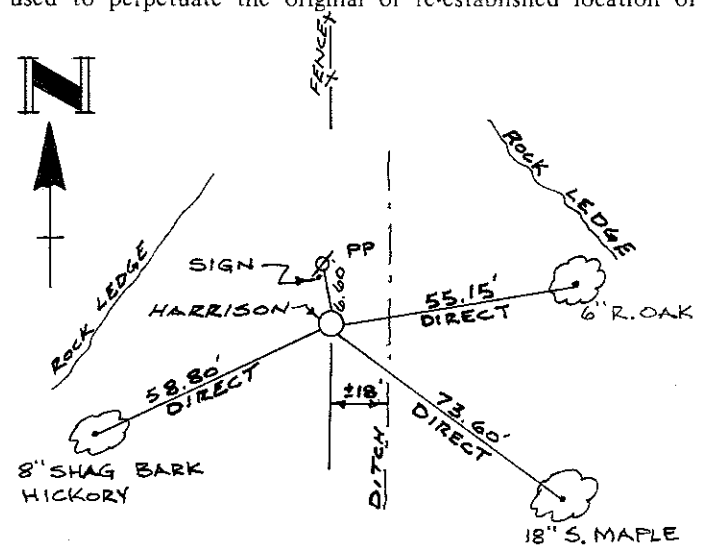
Could find no evidence of bearing trees or corner. Set corner at intersection of East-West 1/4 line fence and a fence line projected from the North. The 1/4 line fence is one of the best fences in the entire Section and was established over some of the least rugged terrain. The Section has extremely high bluffs and deep valleys.

Description of corner and witness monuments, references and accessories used to perpetuate the original or re-established location of this corner:

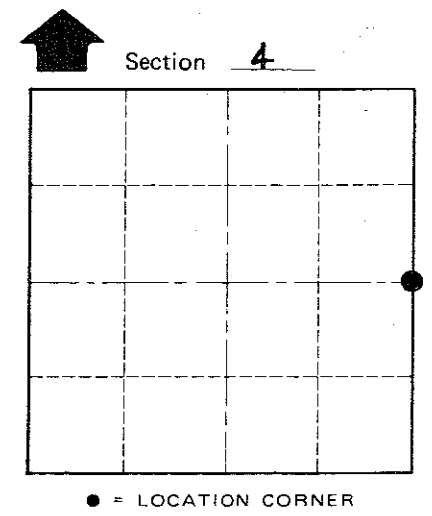
Witnesses to corner location:

Ronald D. Parish

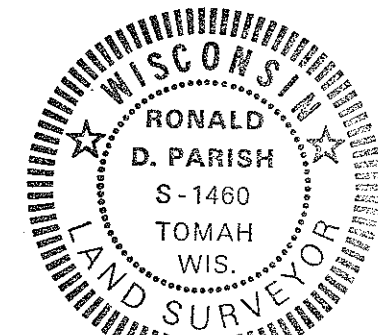
Richard Brueggen



ALL TREES DBL. BLAZED  
1/4 MEAS. TO NAIL & SHINER  
IN BLAZE.



T 15 N R 1 W.  
WISCONSIN



COUNTY SURVEYOR FORM NO. 1

SURVEY CONTROL ORDER

Horizontal \_\_\_\_\_  
Vertical \_\_\_\_\_

WISCONSIN COORDINATE SYSTEM

Corner	East (X)	North (Y)	Elevation (Z)	Zone
Control Sta. Name				

City, Village of WELLINGTON

County of MONROE