

21501032000

I, Gary L. Dechant, do hereby certify that on the 15 day of January, 1996, I found (evidence) (no evidence) of the W/4 corner of Section 2, T 15 N, R 1 W Fourth Principal Meridian, and I re-established said corner according to the Wisconsin Statutes as shown and described hereon.

Dated this 16th day of Jan. 1996.

Gary L. Dechant

RLS 1744

Title

History of corner establishment since Original Government Survey

No known recorded history since the original government survey.

Description of corner evidence found:

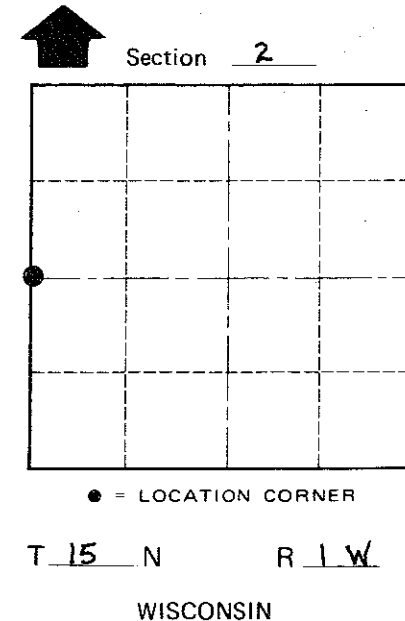
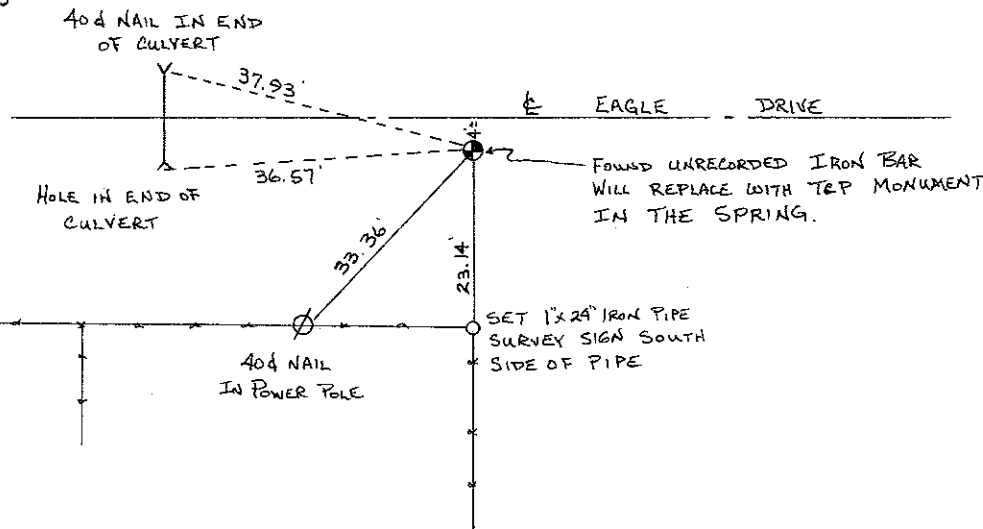
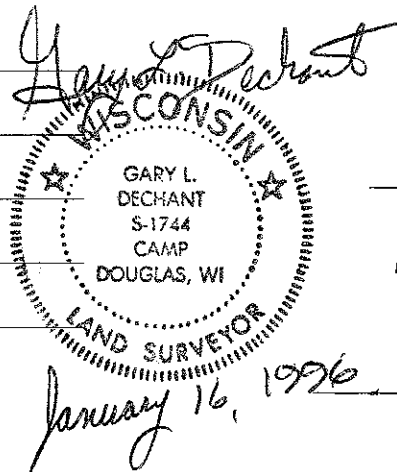
Found unrecorded 3/4" iron bar 4'+ south of the centerline of the Town Road on line with the fence to the south. This fits the original notes to the NW corner of Sec. 2 within 3'+. There is a severe shortage to the SW corner of Sec. 2 of 140'+ (2 chains plus). This could be due partly to the steep bluff between the SW & W/4 corners. Even though there is a shortage, there is good evidence to support the corner location of this W/4 corner. The occupied line at the NW corner of the SW/4-SW/4 roughly measures 1257'+. Also alignment of the C/4 corner falls in the centerline of the Town Road and the NE corner of the NW/4-SE/4 falls 2' north of the occupied fence corner.

Description of corner and witness monuments, references and accessories used to perpetuate the original or re-established location of this corner:

Witnesses to corner location:

David E. Madison

Gary L. Dechant



COUNTY SURVEYOR FORM NO. 1

SURVEY CONTROL ORDER

Table with 2 rows: Horizontal, Vertical.

WISCONSIN COORDINATE SYSTEM

Table with 5 columns: Corner, East (X), North (Y), Elevation (Z), Zone.

City, Village or Town WELLINGTON

County of MONROE