

22

U.S. PUBLIC LAND CORNER MAINTENANCE

Corner ID : S1/4 Sec.1, T15N-R1W
21501010020

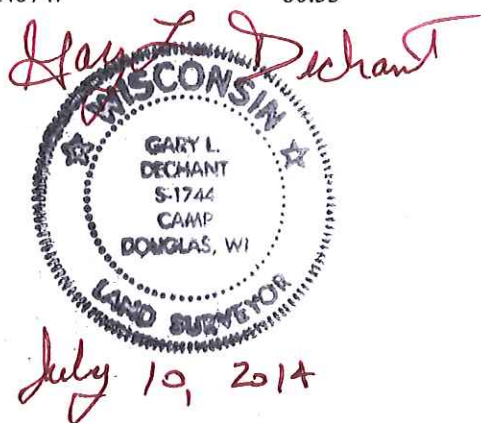
<u>DATE</u>	<u>CREW</u>	<u>MONUMENT TYPE -----</u>
July 10, 2014	Zachariah P. Dechant Gary L. Dechant	Found Harrison in tact 4' west centerline CTH "V" 17' south centerline Monarch Ave

References:

	<u>Bearing</u>	<u>Distance</u>
1) Set 3/4"x24" hex iron bar, flush, in lawn, 11' SW of 26" Maple	N47E	77.32'
2) Set 3/4"x 24" hex iron bar, flush, in lawn	S67E	54.90'
3) Set 3/4"x24" hex iron bar, in field, down 13"	S47W	44.11'
4) Set 3/4"x24" hex iron bar, down 8"	N67W	80.53'

NOTE: Harrison and reference markers
set on straight lines.

COORDINATES:



I, Gary L. Dechant, do hereby certify that on the 4th day of August 19 87, I found ~~XXXXXX~~ (no evidence) of the S¹/₄ corner of Section 1, T15 N, R 1 W Fourth Principal Meridian, and I re-established said corner according to the Wisconsin Statutes as shown and described hereon.

Dated this 7th day of Aug. 19 87.

Gary L. Dechant
Reg. Land Surveyor, S-1744
Title

History of corner establishment since Original Government Survey

A. S. Ingalls was here in June of 1873.

Description of corner evidence found:

Set by single proportionate measurement.

See Reverse Side For Maintenance



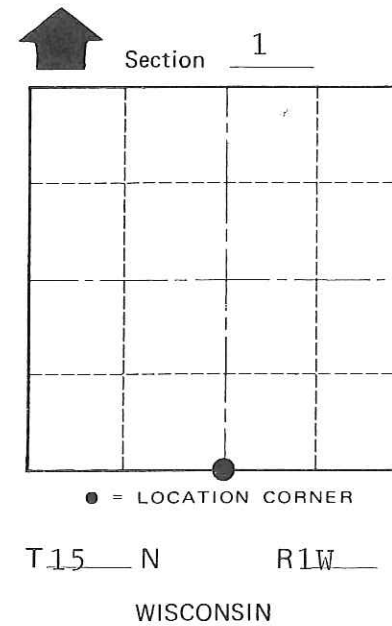
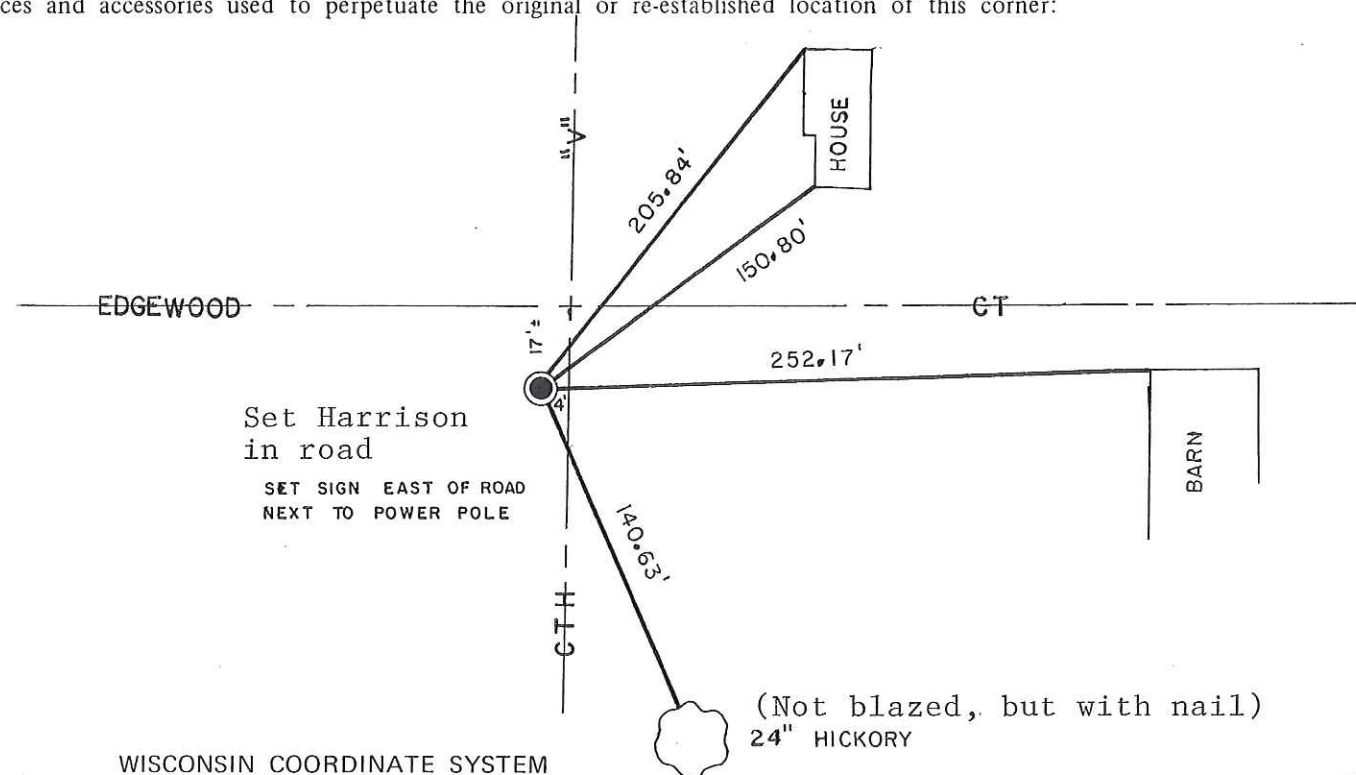
COUNTY SURVEYOR FORM NO. 1

Description of corner and witness monuments, references and accessories used to perpetuate the original or re-established location of this corner:

Witnesses to corner location:

David E. Madison

Gary L. Dechant



SURVEY CONTROL ORDER

Horizontal	_____
Vertical	_____

WISCONSIN COORDINATE SYSTEM

Corner	East (X)	North (Y)	Elevation (Z)	Zone
Control Sta. Name				

~~XXXXXX~~ Town Wellington
County of Monroe