

VERNON COUNTY CERTIFIED U.S. PUBLIC LAND SURVEY MONUMENT RECORD

INSTRUCTIONS: THIS RECORD SHALL SHOW THE LOCATION OF THE CORNER AND SHALL INCLUDE ALL OF THE FOLLOWING ELEMENTS (A-I)

(A) IDENTIFY THE CORNER BY REFERENCE TO THE U.S. PUBLIC LAND SURVEY SYSTEM

■ = CORNER MONUMENT RESTORED

WITNESSES TO CORNER LOCATION:

- 1) Robert M. Lampman
- 2) Jessica A. Zamor

VERNON COUNTY COORDINATES - NAD83(1991) - SURVEY FEET

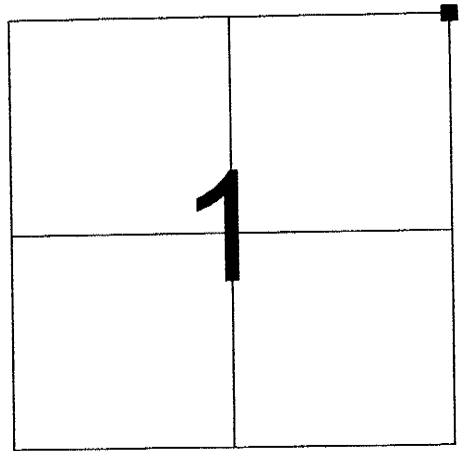
NORTHING: 213323.069

EASTING: 854546.390

MONROE COUNTY COORDINATES - NAD83(1991) - SURVEY FEET

NORTHING: 302265.569

EASTING: 758099.672



SECTION 1
TOWN 14 NORTH, RANGE 1 EAST

(B) DESCRIBE ANY RECORD EVIDENCE, MONUMENT EVIDENCE, OCCUPATIONAL EVIDENCE, TESTIMONIAL EVIDENCE OR ANY OTHER MATERIAL EVIDENCE YOU CONSIDERED, AND WHETHER THE MONUMENT WAS FOUND OR PLACED.

Accepted location of existing Harrison Monument at occupied fence corner. Existing corner location was found to agree well with other evidence of occupation to the West along the Township Line.

(See reverse side for corner history.)

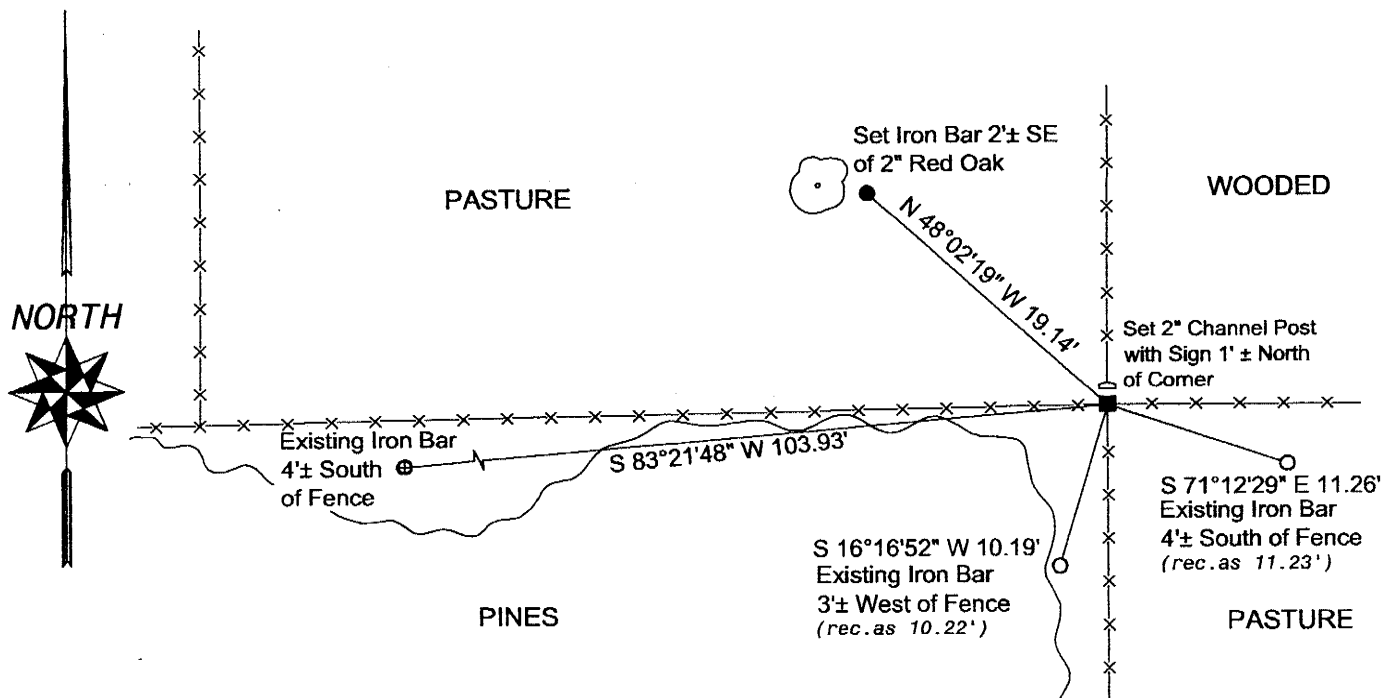
(C) IN THE PLAN VIEW DRAWING BELOW, PROVIDE REFERENCE TIES TO AT LEAST 4 WITNESS MONUMENTS OR, IF THE LOCATION IS WITHIN A MUNICIPALITY, TO AT LEAST 2 WITNESS MONUMENTS. (WITNESS MONUMENTS SHALL BE MADE OF CONCRETE, NATURAL STONE, IRON, OR OTHER EQUALLY DURABLE MATERIAL.) DESCRIBE WITNESS MONUMENTS.

(D) SHOW A PLAN VIEW DRAWING, DEPICTING THE RELEVANT MONUMENTS AND REFERENCE TIES, WHICH IS SUFFICIENTLY DETAILED TO ENABLE ACCURATE RELOCATION OF THE CORNER MONUMENT IF IT IS DISTURBED.

LEGEND

- FOUND EXISTING CAST IRON HARRISON MONUMENT
- SET 3/4" X 24" ROUND IRON BAR FOR WITNESS MONUMENT
- EXISTING 1/2" ROUND IRON BAR
- ⊕ EXISTING 3/4" ROUND IRON BAR

NOT TO SCALE



(E) DESCRIBE ANY MATERIAL DISCREPANCY BETWEEN THE LOCATION OF THE CORNER AS RESTORED OR REESTABLISHED AND THE LOCATION OF THAT CORNER AS PREVIOUSLY RESTORED OR REESTABLISHED BY DISTANCE AND DIRECTION. SHOW THE DISCREPANCY ON THE PLAN VIEW DRAWING UNDER (D), ABOVE. SHOW THE DISTANCES BETWEEN THE CORNER AS PREVIOUSLY RESTORED OR REESTABLISHED AND (1) THE CORNER AS RESTORED OR REESTABLISHED, AND (2) TO AT LEAST 2 OF THE WITNESS MONUMENTS AS SHOWN ON THE DRAWING IN (D), ABOVE.

N/A

(F) WAS THE CORNER RESTORED THROUGH ACCEPTANCE OF (1) AN OBLITERATED EVIDENCE LOCATION, OR (2) A FOUND PERPETUATED LOCATION?

(2) A FOUND PERPETUATED LOCATION

(G & H) WAS THE CORNER REESTABLISHED THROUGH LOST CORNER PROPORTIONATE METHODS? IF SO SHOW THE METHOD, INCLUDING THE DIRECTIONS AND DISTANCES TO OTHER PUBLIC LAND SURVEY CORNERS USED AS EVIDENCE OR USED FOR PROPORTIONING IN DETERMINING THE CORNER LOCATION.

N/A

(**) ANY ADDITIONAL INFORMATION RELATED TO CORNER LOCATION

CORNER HISTORY:

-Original government corner location established by Stuntz & Sargent in 1851.

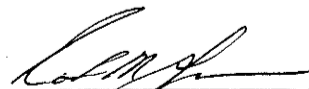
-Frederic W. Zeitlow of Mid-State Associates set a 3/4" rebar at the corner on a survey prepared for Mohns Estate and dated December 13, 1974.

-In May of 1986, James Carroll replaced an existing 3/4" iron rod at the corner with a Harrison Monument and prepared a tie sheet.

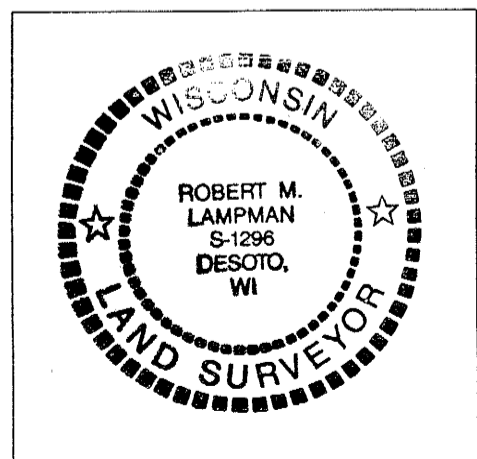
-In Decemember of 1998, Carl M. Sandsness prepared an updated tie sheet for the corner with new witnesses.

AFFIX LAND SURVEYOR SEAL

(I) I, ROBERT M. LAMPMAN, CERTIFY THAT THE LOCATION SHOWN ON THIS RECORD WAS DETERMINED BY ME OR UNDER MY DIRECTION AND CONTROL AND THAT THIS U.S. PUBLIC LAND SURVEY MONUMENT RECORD IS CORRECT AND COMPLETE TO THE BEST OF MY KNOWLEDGE AND BELIEF.


SIGNATURE

3-10-04
DATE



FOR VERNON COUNTY, WISCONSIN

4/501360000

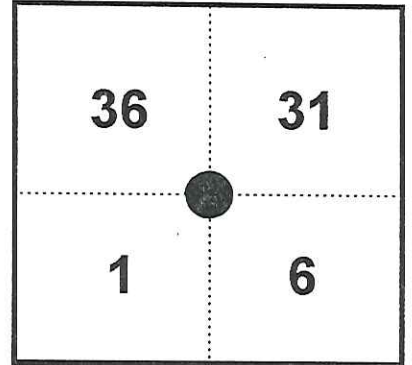
Note: This form is intended and designed to fulfill all requirements of Wisconsin Administrative Code, Chapter AE-7.08, U.S. Public Land Survey Monument Record (3)(a)(b)(c)(d)(e)(f)(g)(h)(i). Use additional sheets if necessary.

(a) The Section corner common to Sections 1,6,31,36

Township(s) 14,15 North, Range(s) 1,2 East.

Vernon County Coordinates: N 213323.028

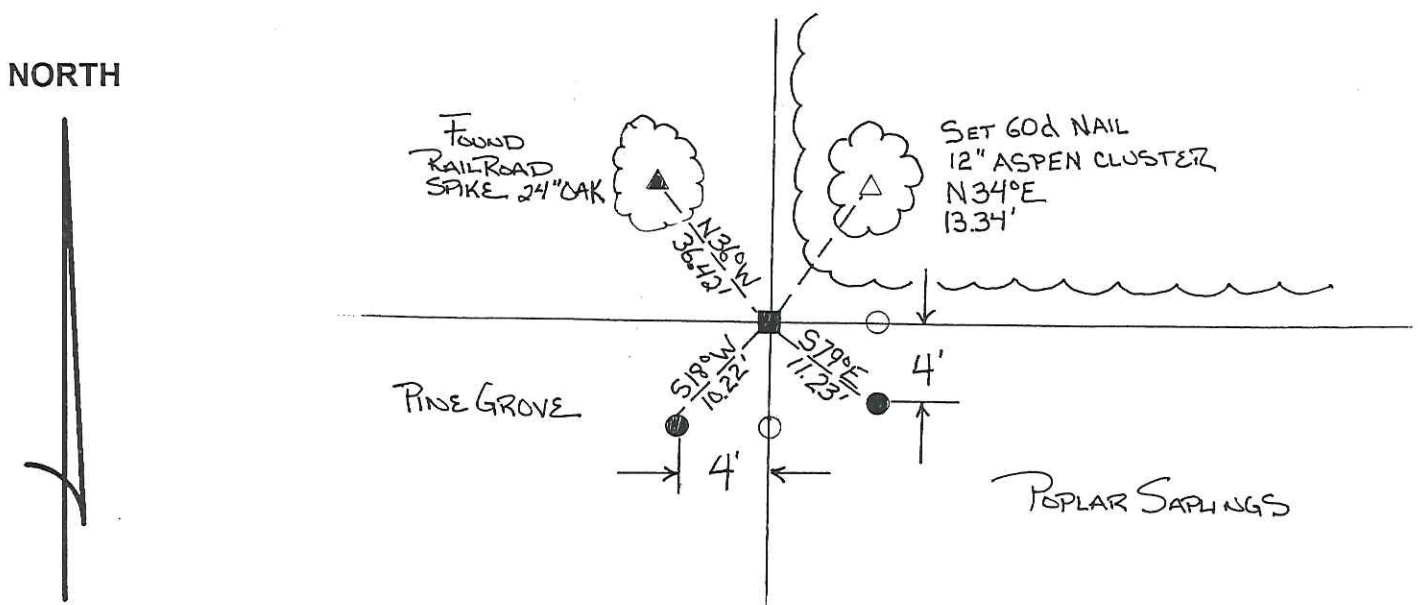
Datum: _____ E 854546.666



(b)(f)(h) Description of monument found at this corner and if it was accepted, state all evidence (material, testimonial, occupational, plats records, other monuments) used as a basis for accepting. If not accepted or nothing was found, state evidence used as basis for establishing location and what was set. If re-established through lost corner proportionate methods, indicate all monuments, distances and directions used.

11-8-98 - I found Harrison Monument at intersection of fences, accepted as true corner location and set witness monuments as shown.

(c)(d)(e) Plan view of corner with ties to at least four (4) witness monuments. If in disagreement with previously established corner, show the distances between the two corners and also indicate ties to disputed corner.



Not To Scale

- = Found Harrison monument
- ▲ = Found Railroad Spike
- △ = Set 60d nail
- = 1/2" SET REBAR

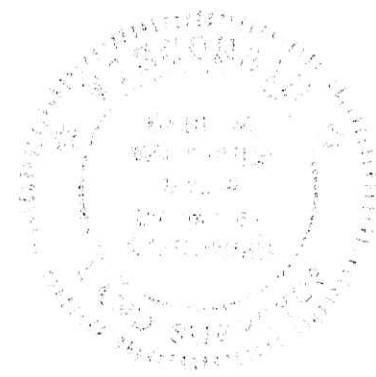
(I) Certify that the corner location on this record was determined by me or under my direction and control and that this U.S. Public Land survey Monument Record is correct and complete to the best of my knowledge and belief.

[Handwritten Signature]

 Signature

12/22/98

 Date



Filed for record in Vernon County Surveyor's Office on _____ INDEX NO. _____

41501360000

121

JUNEAU COUNTY

Survey Monument Record

TYPE OF MONUMENT: HARRISON

STATE PLANE COORDINATES: N _____
E _____

ELEVATION — M.S.L. DATUM: _____

THETA ANGLE: _____

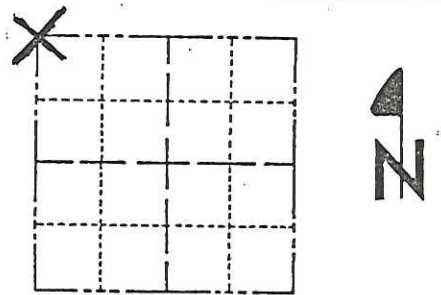
FIELD BOOK: _____ PAGE _____

CORNER NO. _____

SECTION 36 6

TOWN 15 14

RANGE 1E 2E



LOCATION
(Indicated by 'X')

SEAL:



BASIS FOR MONUMENT LOCATION

(Use reverse side if necessary)

Show info such as: History of corner, with reference to Vol. and pg, dates, surveyor; exact description of monument replaced; if location computed, by taped or EDM traverse; landowner remarks, etc.

REPLACED 3/4" ROD

Iron rod found in place at the fence corner set by other Surveyor.
Accepted as the true corner location.

CERTIFIED CORRECT.
James Carroll
Registered Land Surveyor
DATE: 3/23/86

TIE SKETCH

(Show at least four ties)



Corner No. 121

JUNEAU COUNTY SURVEY MONUMENT RECORD

CORNER NO. 1
SECTION 6
TOWN 14N.
RANGE 2E.

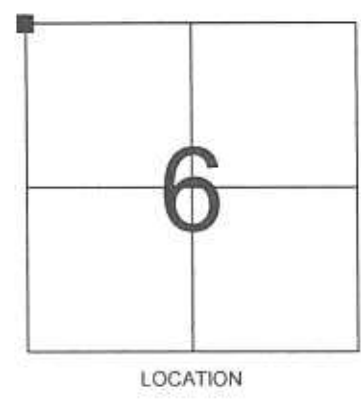
TYPE OF MONUMENT: STANDARD HARRISON MONUMENT

JUNEAU COUNTY COORDINATES
NORTHING: 133,133.92
EASTING: 400,481.86

■ = CORNER MONUMENT RESTORED

BASIS FOR MONUMENT LOCATION
(USE REVERSE SIDE IF NECESSARY)

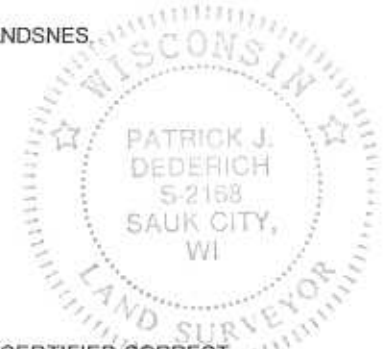
SHOW INFO SUCH AS: HISTORY OF CORNER, WITH REFERENCE TO VOLUME AND PAGE DATES, SURVEYOR; EXACT DESCRIPTION OF MONUMENT PLACED OR FOUND, IF LOCATION COMPUTED, BY TAPED OR EDM TRAVERSE; LANDOWNER REMARKS, ETC.



HARRISON MONUMENT FOUND AS PER TIE SHEET DATED 12/22/1998 BY CARL SANDSNES.

LEGEND

- = HARRISON MONUMENT FOUND
 - = 3/4" X 24" IRON ROD SET
 - = 5/8" DIAMETER IRON ROD FOUND
 - ∅ = 3/4" DIAMETER IRON ROD FOUND
 - () = PREVIOUSLY RECORDED AS
- AZIMUTHS ARE MAGNETIC



CERTIFIED CORRECT

Patrick J. Dederich
REGISTERED LAND SURVEYOR
DATE 6/18/2004

TIE SKETCH
(SHOW AT LEAST FOUR TIES)

NOT TO SCALE



BEARINGS ARE BASED
ON THE JUNEAU COUNTY
COORDINATE SYSTEM
UNLESS OTHERWISE NOTED

