

VERNON COUNTY CERTIFIED U.S. PUBLIC LAND SURVEY MONUMENT RECORD

INSTRUCTIONS: THIS RECORD SHALL SHOW THE LOCATION OF THE CORNER AND SHALL INCLUDE ALL OF THE FOLLOWING ELEMENTS (A-I)

(A) IDENTIFY THE CORNER BY REFERENCE TO THE U.S. PUBLIC LAND SURVEY SYSTEM

■ = CORNER MONUMENT RESTORED

WITNESSES TO CORNER LOCATION:

- 1) Robert M. Lampman
- 2) Jessica A. Zamor

VERNON COUNTY COORDINATES - NAD83(1991) - SURVEY FEET

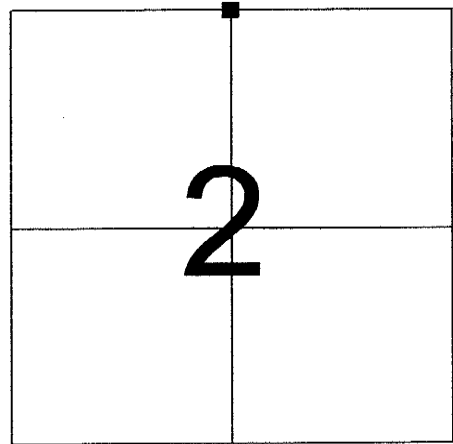
NORTHING: 212800.210

EASTING: 846625.799

MONROE COUNTY COORDINATES - NAD83(1991) - SURVEY FEET

NORTHING: 301755.972

EASTING: 750178.139



SECTION 2
TOWN 14 NORTH, RANGE 1 EAST

(B) DESCRIBE ANY RECORD EVIDENCE, MONUMENT EVIDENCE, OCCUPATIONAL EVIDENCE, TESTIMONIAL EVIDENCE OR ANY OTHER MATERIAL EVIDENCE YOU CONSIDERED, AND WHETHER THE MONUMENT WAS FOUND OR PLACED.

Accepted location of existing True Cast Products Monument at occupied fence corner.

The east/west position of the monument is verified by the occupied forty corners to the east and west. Both of said occupied forty corners were found to fall within 2.5' of being equal distance from this monument and the next existing section corner monument. Distances running east and west were also found to check reasonably well with original government distances. Said distances measuring 2644.28 feet and 2647.70 feet respectively.

The north/south position of the monument lines up with strong occupation running west for one-quarter mile. The north/south position of the corner also lines up well with monumentation running to the east. A line run from this corner to the N 1/4 corner of Section 1 passes approximately 2.7' south of the NE corner of Section 2.

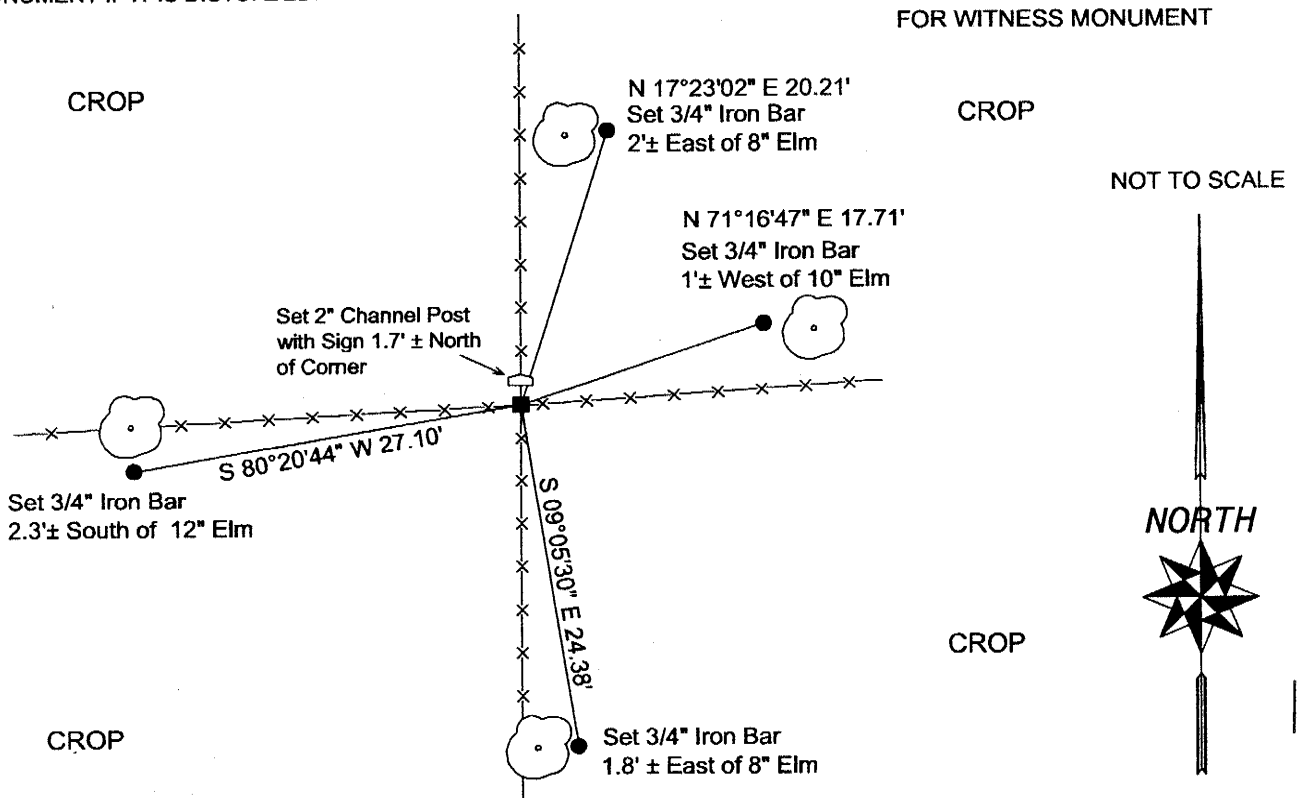
This corner exists approximately 17.6 feet south of a straight line between the NE and NW corners of Section 2. Direction of occupation running east from this corner does not line up with the NE corner of Section 2. Said occupation runs easterly approximately on an extension of the direction along the North line of the NW 1/4 of Section 2. Therefore, the occupied forty corner to the east is located approximately 16 feet southerly of the section line.

(C) IN THE PLAN VIEW DRAWING BELOW, PROVIDE REFERENCE TIES TO AT LEAST 4 WITNESS MONUMENTS OR, IF THE LOCATION IS WITHIN A MUNICIPALITY, TO AT LEAST 2 WITNESS MONUMENTS. (WITNESS MONUMENTS SHALL BE MADE OF CONCRETE, NATURAL STONE, IRON, OR OTHER EQUALLY DURABLE MATERIAL.) DESCRIBE WITNESS MONUMENTS.

(D) SHOW A PLAN VIEW DRAWING, DEPICTING THE RELEVANT MONUMENTS AND REFERENCE TIES, WHICH IS SUFFICIENTLY DETAILED TO ENABLE ACCURATE RELOCATION OF THE CORNER MONUMENT IF IT IS DISTURBED.

LEGEND

- FOUND EXISTING CAST IRON TRUE CAST PRODUCTS MON.
- SET 3/4" X 24" ROUND IRON BAR FOR WITNESS MONUMENT



(E) DESCRIBE ANY MATERIAL DISCREPANCY BETWEEN THE LOCATION OF THE CORNER AS RESTORED OR REESTABLISHED AND THE LOCATION OF THAT CORNER AS PREVIOUSLY RESTORED OR REESTABLISHED BY DISTANCE AND DIRECTION. SHOW THE DISCREPANCY ON THE PLAN VIEW DRAWING UNDER (D), ABOVE. SHOW THE DISTANCES BETWEEN THE CORNER AS PREVIOUSLY RESTORED OR REESTABLISHED AND (1) THE CORNER AS RESTORED OR REESTABLISHED, AND (2) TO AT LEAST 2 OF THE WITNESS MONUMENTS AS SHOWN ON THE DRAWING IN (D), ABOVE.

N/A

(F) WAS THE CORNER RESTORED THROUGH ACCEPTANCE OF (1) AN OBLITERATED EVIDENCE LOCATION, OR (2) A FOUND PERPETUATED LOCATION?

(2) A FOUND PERPETUATED LOCATION

(G & H) WAS THE CORNER REESTABLISHED THROUGH LOST CORNER PROPORTIONATE METHODS? IF SO SHOW THE METHOD, INCLUDING THE DIRECTIONS AND DISTANCES TO OTHER PUBLIC LAND SURVEY CORNERS USED AS EVIDENCE OR USED FOR PROPORTIONING IN DETERMINING THE CORNER LOCATION.

N/A

(**) ANY ADDITIONAL INFORMATION RELATED TO CORNER LOCATION

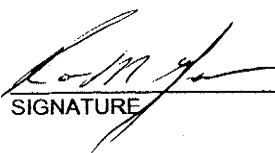
CORNER HISTORY:

-Original government corner location established by Stuntz & Sargent in 1851.

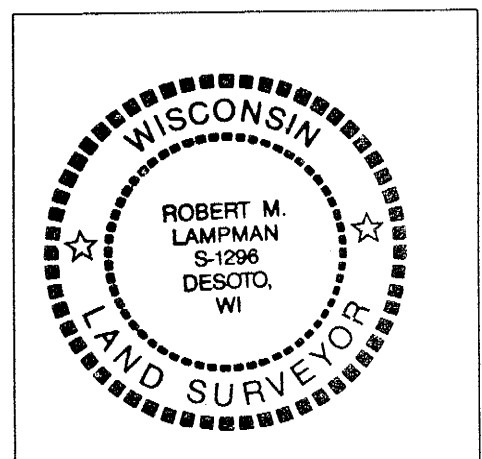
-Lawrence A. Feddersen set a True Cast Products Monument at the corner and prepared a tie sheet dated August 14, 1995. Feddersen established the corner location by acceptance of occupational evidence.

AFFIX LAND SURVEYOR SEAL

(I) I, ROBERT M. LAMPMAN, CERTIFY THAT THE LOCATION SHOWN ON THIS RECORD WAS DETERMINED BY ME OR UNDER MY DIRECTION AND CONTROL AND THAT THIS U.S. PUBLIC LAND SURVEY MONUMENT RECORD IS CORRECT AND COMPLETE TO THE BEST OF MY KNOWLEDGE AND BELIEF.


SIGNATURE

3-10-04
DATE



41501350020

I, Lawrence A. Feddersen, do hereby certify that on the twentieth day of July 19 95, I found (evidence) ~~(no evidence)~~ of the South Quarter corner of Section 35, T 15 N, R 1 E Fourth Principal Meridian, and I re-established said corner according to the Wisconsin Statutes as shown and described hereon.

Dated this 14 day of August 19 95.

Lawrence A. Feddersen

Registered Land Surveyor
Title

History of corner establishment since Original Government Survey

No record of re-established corner.

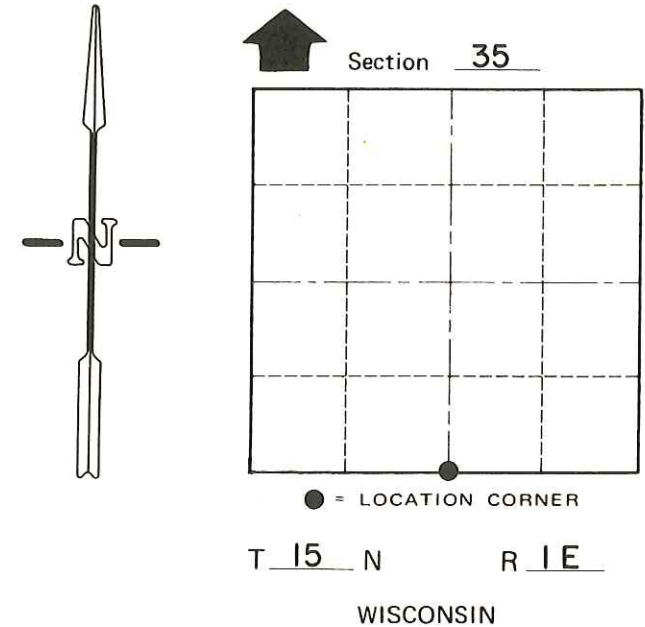
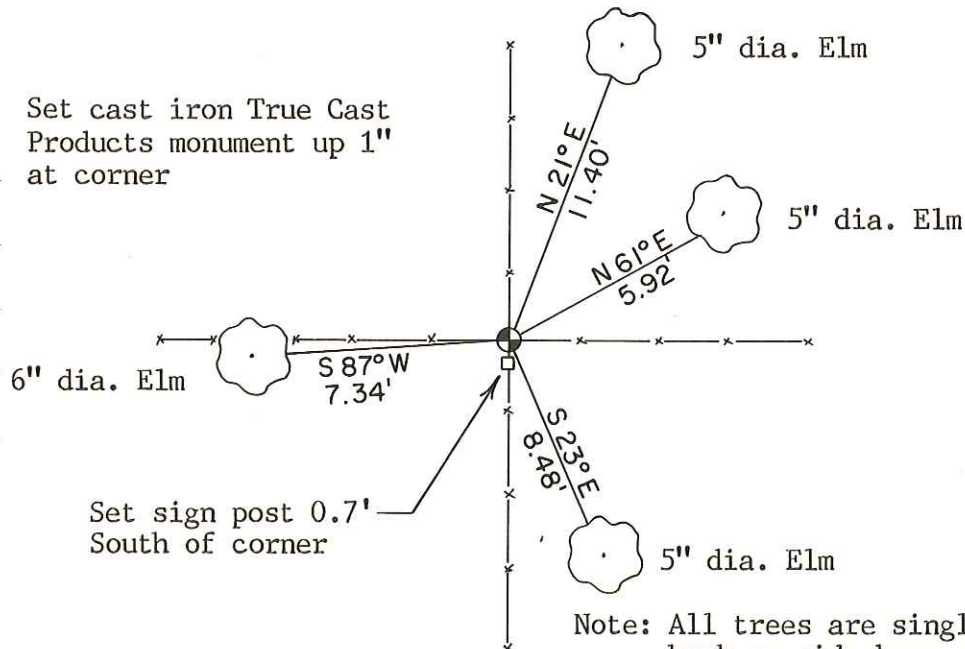
Description of corner evidence found:

Accepted a 4-way fence as best possible evidence.

Description of corner and witness monuments, references and accessories used to perpetuate the original or re-established location of this corner:

Witnesses to corner location:

- Lawrence A. Feddersen
- Douglas J. Malliet
- Timothy J. Jeatran



Note: All trees are single blazed with PK nail & washer in hack on side base of tree. Measurements are to the PK nail.

SURVEY CONTROL ORDER

Horizontal	_____
Vertical	_____

WISCONSIN COORDINATE SYSTEM

Corner	East (X)	North (Y)	Elevation (Z)	Zone
Control Sta. Name				

XXXXXXXXXX Town of Glendale
County of Monroe

COUNTY SURVEYOR FORM NO. 1