

VERNON COUNTY CERTIFIED U.S. PUBLIC LAND SURVEY MONUMENT RECORD

INSTRUCTIONS: THIS RECORD SHALL SHOW THE LOCATION OF THE CORNER AND SHALL INCLUDE ALL OF THE FOLLOWING ELEMENTS (A-I)

(A) IDENTIFY THE CORNER BY REFERENCE TO THE U.S. PUBLIC LAND SURVEY SYSTEM

■ = CORNER MONUMENT RESTORED

WITNESSES TO CORNER LOCATION:

- 1) Robert M. Lampman
- 2) Jessica A. Zamor

VERNON COUNTY COORDINATES - NAD83(1991) - SURVEY FEET

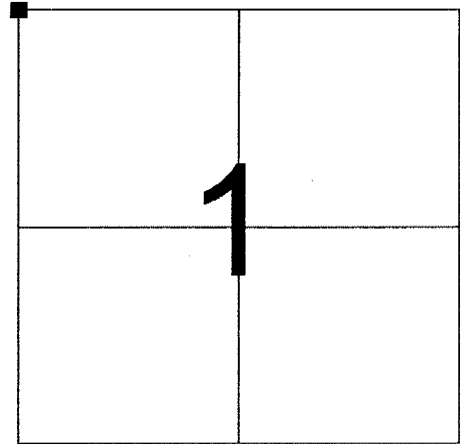
NORTHING: 212972.812

EASTING: 849264.449

MONROE COUNTY COORDINATES - NAD83(1991) - SURVEY FEET

NORTHING: 301924.154

EASTING: 752817.101



SECTION 1
TOWN 14 NORTH, RANGE 1 EAST

(B) DESCRIBE ANY RECORD EVIDENCE, MONUMENT EVIDENCE, OCCUPATIONAL EVIDENCE, TESTIMONIAL EVIDENCE OR ANY OTHER MATERIAL EVIDENCE YOU CONSIDERED, AND WHETHER THE MONUMENT WAS FOUND OR PLACED.

Accepted location of existing True Cast Products Monument at occupied fence corner. The existing corner location falls only approximately 2.7 feet north of a straight line between the one-quarter corners to the east and west. Distances to the east and west also compare reasonably well with government. Said distances measure 2654.62 feet and 2644.28 feet respectively. The east/west position of this corner agrees extremely well with the occupied forty corners to both the east and west.

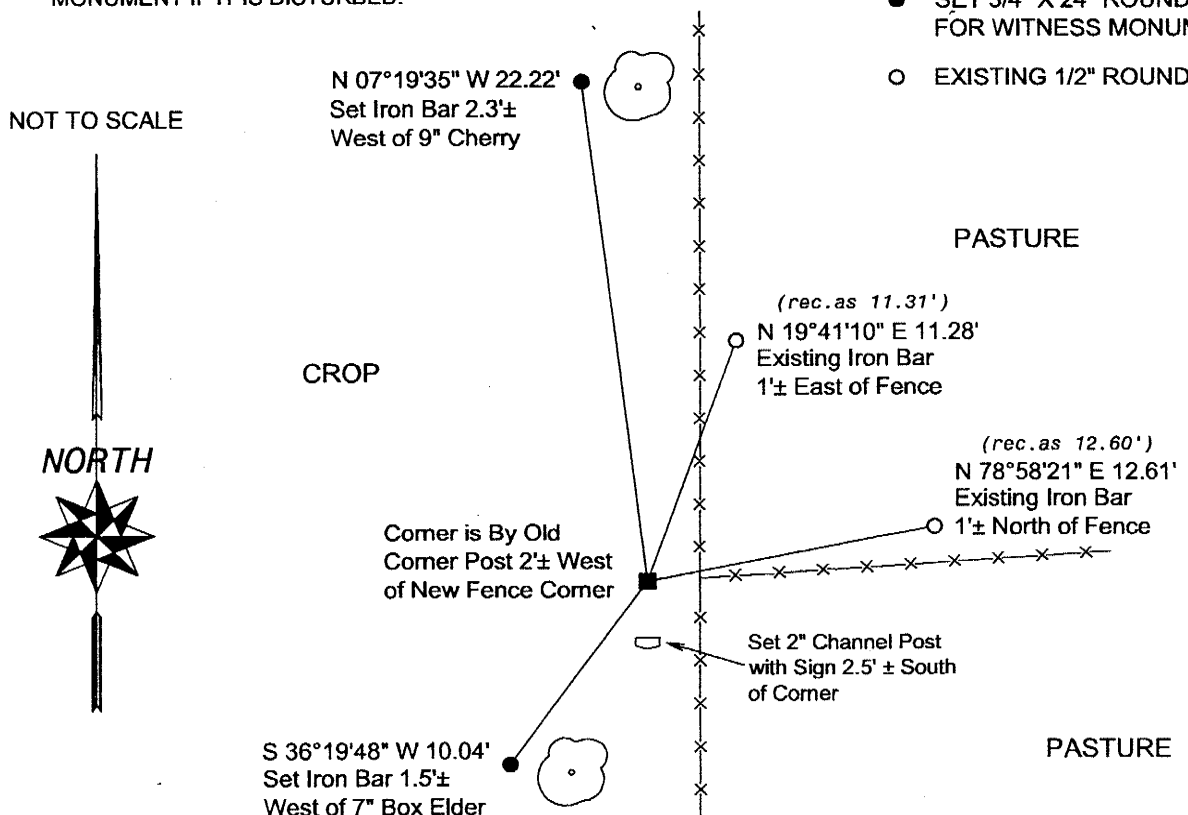
The north/south location of this corner is supported by alignment with adjacent one-quarter corners east and west and occupation at this corner. Occupation at the forty corner to the west is south of the section line running west and occupation at the forty corner to the east is north of the section line running east. No explanation was found for this. However, the two forty corners are offset such that if you run a line between the two occupied corners, said line passes through less than 2 feet north of this existing section corner monument.

(C) IN THE PLAN VIEW DRAWING BELOW, PROVIDE REFERENCE TIES TO AT LEAST 4 WITNESS MONUMENTS OR, IF THE LOCATION IS WITHIN A MUNICIPALITY, TO AT LEAST 2 WITNESS MONUMENTS. (WITNESS MONUMENTS SHALL BE MADE OF CONCRETE, NATURAL STONE, IRON, OR OTHER EQUALLY DURABLE MATERIAL.) DESCRIBE WITNESS MONUMENTS.

(D) SHOW A PLAN VIEW DRAWING, DEPICTING THE RELEVANT MONUMENTS AND REFERENCE TIES, WHICH IS SUFFICIENTLY DETAILED TO ENABLE ACCURATE RELOCATION OF THE CORNER MONUMENT IF IT IS DISTURBED.

LEGEND

- FOUND EXISTING CAST IRON TRUE CAST PRODUCTS MON.
- SET 3/4" X 24" ROUND IRON BAR FOR WITNESS MONUMENT
- EXISTING 1/2" ROUND IRON BAR



(E) DESCRIBE ANY MATERIAL DISCREPANCY BETWEEN THE LOCATION OF THE CORNER AS RESTORED OR REESTABLISHED AND THE LOCATION OF THAT CORNER AS PREVIOUSLY RESTORED OR REESTABLISHED BY DISTANCE AND DIRECTION. SHOW THE DISCREPANCY ON THE PLAN VIEW DRAWING UNDER (D), ABOVE. SHOW THE DISTANCES BETWEEN THE CORNER AS PREVIOUSLY RESTORED OR REESTABLISHED AND (1) THE CORNER AS RESTORED OR REESTABLISHED, AND (2) TO AT LEAST 2 OF THE WITNESS MONUMENTS AS SHOWN ON THE DRAWING IN (D), ABOVE.

N/A

(F) WAS THE CORNER RESTORED THROUGH ACCEPTANCE OF (1) AN OBLITERATED EVIDENCE LOCATION, OR (2) A FOUND PERPETUATED LOCATION?

(2) A FOUND PERPETUATED LOCATION

(G & H) WAS THE CORNER REESTABLISHED THROUGH LOST CORNER PROPORTIONATE METHODS? IF SO SHOW THE METHOD, INCLUDING THE DIRECTIONS AND DISTANCES TO OTHER PUBLIC LAND SURVEY CORNERS USED AS EVIDENCE OR USED FOR PROPORTIONING IN DETERMINING THE CORNER LOCATION.

N/A

(**) ANY ADDITIONAL INFORMATION RELATED TO CORNER LOCATION

CORNER HISTORY:

-Original government corner location established by Stuntz & Sargent in 1851.

-Gary Dechant set a True Cast Products Monument at the corner and prepared a tie sheet dated December 31, 1996. Gary Dechant reestablished the corner location by accepting occupational evidence as per the remains of a large old fence corner post.

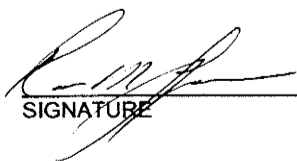
-Richard T. Blakeslee calls for a Monroe County Cast Iron Monument found on a survey dated August 3, 1997.

-Patrick Carroll calls for a found Harrison Marker on surveys dated between 1999 and 2002.

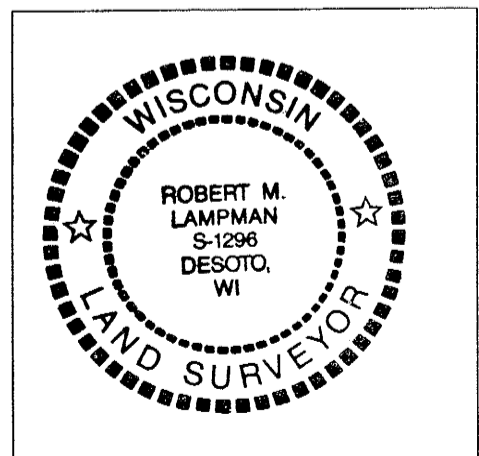
-In Decemember of 1998, Carl M. Sandsness prepared an updated tie sheet for the corner with new witnesses.

AFFIX LAND SURVEYOR SEAL

(I) I, ROBERT M. LAMPMAN, CERTIFY THAT THE LOCATION SHOWN ON THIS RECORD WAS DETERMINED BY ME OR UNDER MY DIRECTION AND CONTROL AND THAT THIS U.S. PUBLIC LAND SURVEY MONUMENT RECORD IS CORRECT AND COMPLETE TO THE BEST OF MY KNOWLEDGE AND BELIEF.


SIGNATURE

3-10-04
DATE



FOR VERNON COUNTY, WISCONSIN

41501350000

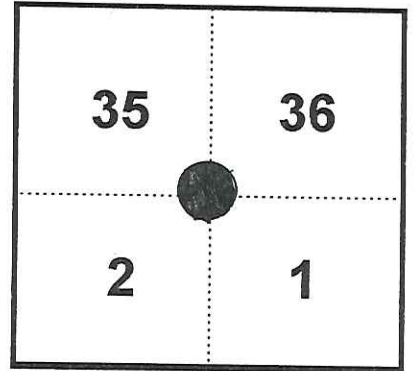
Note: This form is intended and designed to fulfill all requirements of Wisconsin Administrative Code, Chapter AE-7.08, U.S. Public Land Survey Monument Record (3)(a)(b)(c)(d)(e)(f)(g)(h)(i). Use additional sheets if necessary.

(a) The Section corner common to Sections 1,2,35,36

Township(s) 14,15 North, Range(s) 1 East.

Vernon County Coordinates: N 212972.749

Datum: _____ E 849264.735

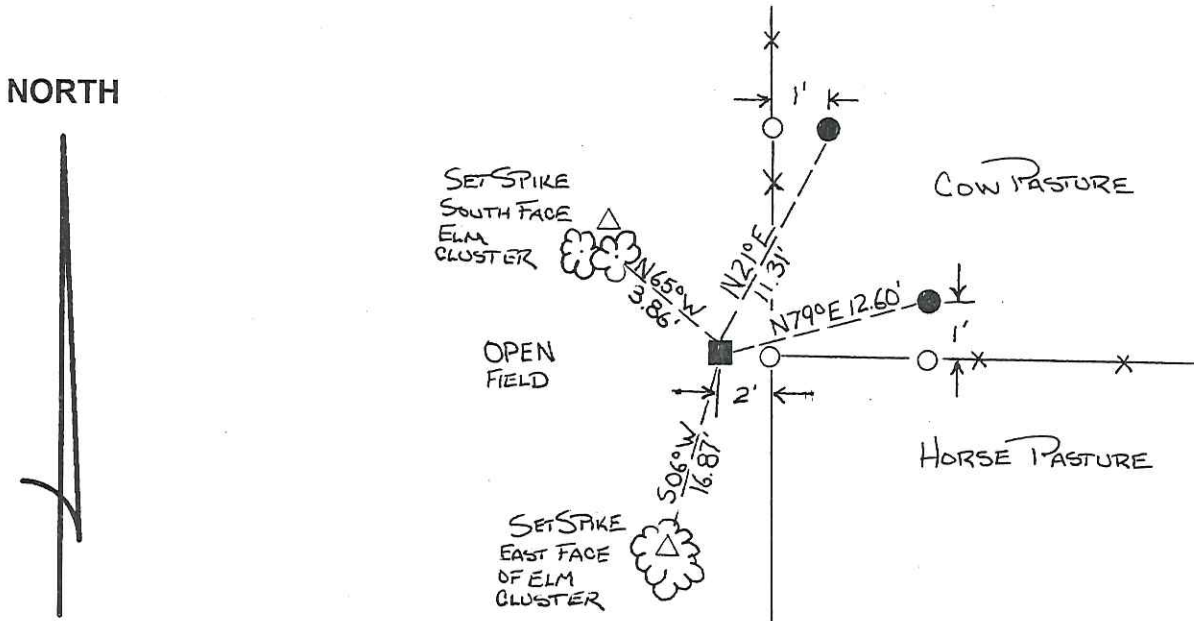


(b)(f)(h) Description of monument found at this corner and if it was accepted, state all evidence (material, testimonial, occupational, plats records, other monuments) used as a basis for accepting. If not accepted or nothing was found, state evidence used as basis for establishing location and what was set. If re-established through lost corner proportionate methods, indicate all monuments, distances and directions used.

12-26-1851 - J. E. Davidson established West line of Section 1 (96.40 chains).

11-8-1998 - I found corner monument at intersection of fences, accepted as true corner location and set witness monuments as shown.

(c)(d)(e) Plan view of corner with ties to at least four (4) witness monuments. If in disagreement with previously established corner, show the distances between the two corners and also indicate ties to disputed corner.



Not To Scale

- = Found Harrison monument
- = Set 1/2" rebar (1' FROM FENCE POSTS)
- △ = Set 60d nail
- = Wood fence post

(I) Certify that the corner location on this record was determined by me or under my direction and control and that this U.S. Public Land survey Monument Record is correct and complete to the best of my knowledge and belief.

[Signature]
Signature

12/22/98
Date



Filed for record in Vernon County Surveyor's Office on _____ INDEX NO. _____

123

CERTIFICATE

CERTIFIED LAND CORNER

No. 123

41501350000

I, Gary L. Dechant, do hereby certify that on the 18th day of December 19 96, I found (evidence) (~~no evidence~~) of the SW corner of Section 36, T 15 N, R 1 E Fourth Principal Meridian, and I re-established said corner according to the Wisconsin Statutes as shown and described hereon.

History of corner establishment since Original Government Survey

No known recorded history since the original government survey.

Description of corner evidence found:

Set corner 34 west of new fence corner, sets next to a old large post. Accepted old remains of post as best available evidence of the corner.

Dated this 31st day of Dec. 19 96.

Gary L. Dechant

R.L.S. 1744

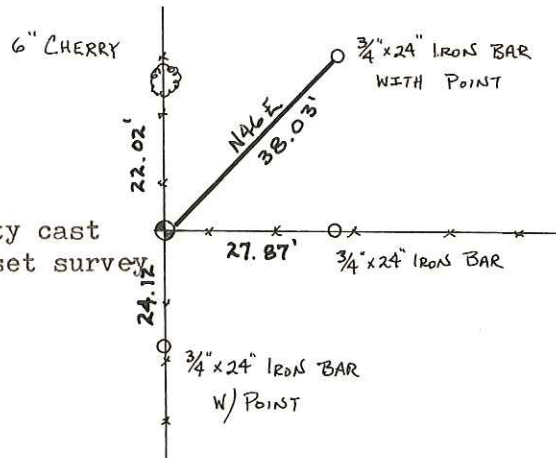
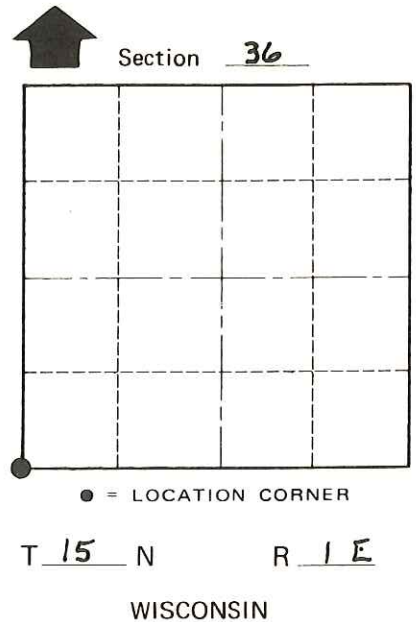
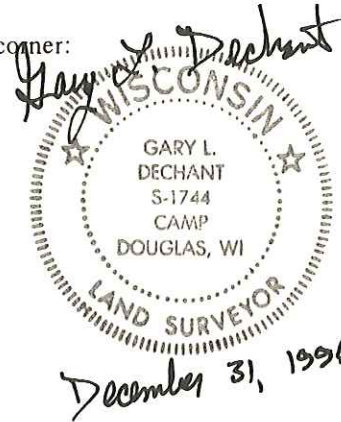
Title

Description of corner and witness monuments, references and accessories used to perpetuate the original or re-established location of this corner:

Witnesses to corner location:

David E. Madison

Gary L. Dechant



Set Monroe County cast iron monument, set survey sign 1' north.

Cherry is double blazed with 40d nail set)

COUNTY SURVEYOR FORM NO. 1

SURVEY CONTROL ORDER

Horizontal	_____
Vertical	_____

WISCONSIN COORDINATE SYSTEM

Corner	East (X)	North (Y)	Elevation (Z)	Zone
Control Sta. Name				

City, Village or Town GLENDALE
County of MONROE