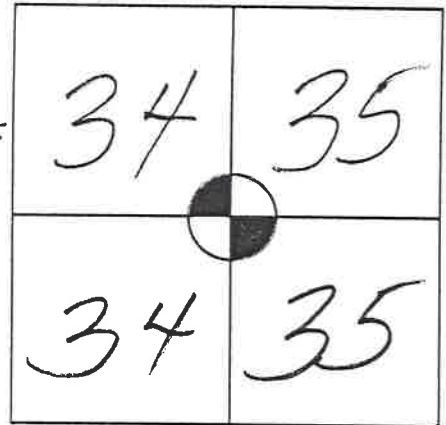


41501342000

MONROE COUNTY CERTIFIED U.S. PUBLIC LAND SURVEY MONUMENT RECORD

INSTRUCTIONS: THIS RECORD SHALL SHOW THE LOCATION OF THE CORNER AND SHALL INCLUDE ALL OF THE FOLLOWING ELEMENTS (A-I) **FOUND TRUE CAST PRODUCTS (TCP) CAST IRON MONUMENT ± 8" BELOW PAVEMENT GRADE @ QUARTER CORNER.**

TOWN OF GLENDALE
R1E



■ = CORNER MONUMENT RESTORED

WITNESSES TO CORNER LOCATION:

- 1)
- 2)
- 3)

STATE PLANE COORDINATES (WISCONSIN SOUTH ZONE)

NORTHING:

EASTING:

N 304317.50

THESE COORDINATES COMPLY WITH WIS. CSA SPECS. FOR "SURVEY GRADE".

MONROE COUNTY COORDINATES

NORTHING: WICRS

EASTING: NAD83(2011)

E 747474.67

(B) DESCRIBE ANY RECORD EVIDENCE, MONUMENT EVIDENCE, OCCUPATIONAL EVIDENCE, TESTIMONIAL EVIDENCE OR ANY OTHER MATERIAL EVIDENCE YOU CONSIDERED, AND WHETHER THE MONUMENT WAS FOUND OR PLACED.

I ACCEPTED THIS CORNER PER TIE SHEET BY OF BRYAN MEYER DATED 12/2/92. ALL TIES FOUND DESTROYED. I ADDED NEW TIES & COORDINATES FOR THIS TCP MONUMENT FOUND IN PAVEMENT.

(C) IN THE PLAN VIEW DRAWING BELOW, PROVIDE REFERENCE TIES TO AT LEAST 4 WITNESS MONUMENTS OR, IF THE LOCATION IS WITHIN A MUNICIPALITY, TO AT LEAST 2 WITNESS MONUMENTS. (WITNESS MONUMENTS SHALL BE MADE OF CONCRETE, NATURAL STONE, IRON, OR OTHER EQUALLY DURABLE MATERIAL.) DESCRIBE WITNESS MONUMENTS.

ALL AZIMUTHS ARE MONROE Co. WICRS GRID NAD83(2011)

(D) SHOW A PLAN VIEW DRAWING, DEPICTING THE RELEVANT MONUMENTS AND REFERENCE TIES, WHICH IS SUFFICIENTLY DETAILED TO ENABLE ACCURATE RELOCATION OF THE CORNER MONUMENT IF IT IS DISTURBED.

40 SCALE
PLOT PLAN
KEY

- 3/4" x 18" REBAR SET
- ▲ 60Q NAIL FOUND

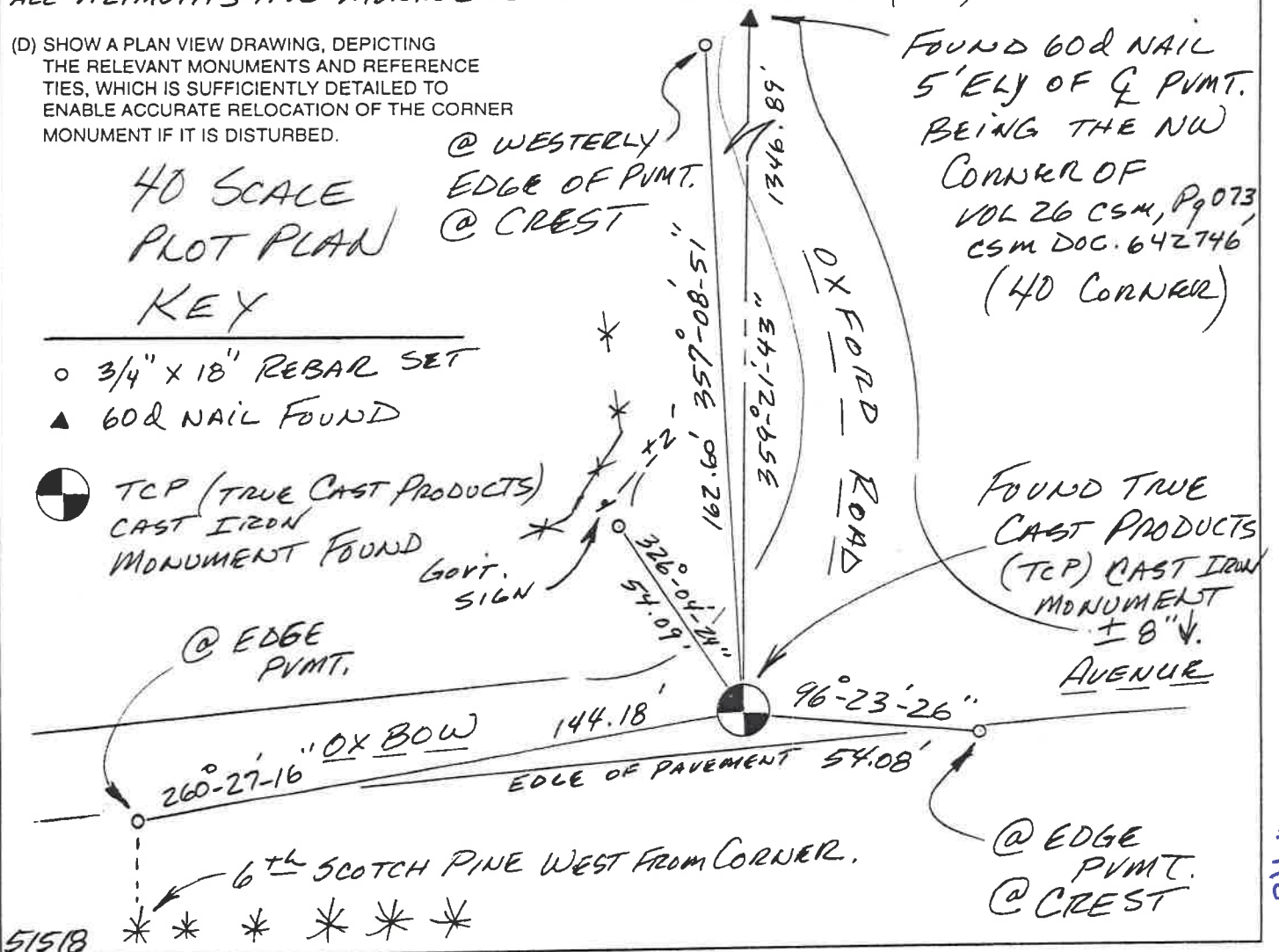
● TCP (TRUE CAST PRODUCTS) CAST IRON MONUMENT FOUND

@ EDGE PVMT.

@ WESTERLY EDGE OF PVMT. @ CREST

FOUND 60Q NAIL 5' ELY OF Q PVMT. BEING THE NW CORNER OF VOL 26 CSM, P 073 CSM DOC. 642746 (40 CORNER)

FOUND TRUE CAST PRODUCTS (TCP) CAST IRON MONUMENT ± 8" AVENUE



@ EDGE PVMT. @ CREST

51518

118

(E) DESCRIBE ANY MATERIAL DISCREPANCY BETWEEN THE LOCATION OF THE CORNER AS RESTORED OR REESTABLISHED AND THE LOCATION OF THAT CORNER AS PREVIOUSLY RESTORED OR REESTABLISHED BY DISTANCE AND DIRECTION. SHOW THE DISCREPANCY ON THE PLAN VIEW DRAWING UNDER (D), ABOVE. SHOW THE DISTANCES BETWEEN THE CORNER AS PREVIOUSLY RESTORED OR REESTABLISHED AND (1) THE CORNER AS RESTORED OR REESTABLISHED, AND (2) TO AT LEAST 2 OF THE WITNESS MONUMENTS AS SHOWN ON THE DRAWING IN (D), ABOVE.

NONE.

(F) WAS THE CORNER RESTORED THROUGH ACCEPTANCE OF (1) AN OBLITERATED EVIDENCE LOCATION, OR (2) A FOUND PERPETUATED LOCATION?

(2).

(G & H) WAS THE CORNER REESTABLISHED THROUGH LOST CORNER PROPORTIONATE METHODS? IF SO SHOW THE METHOD, INCLUDING THE DIRECTION AND DISTANCES TO OTHER PUBLIC LAND SURVEY CORNERS USED AS EVIDENCE OR USED FOR PROPORTIONING IN DETERMINING THE CORNER LOCATION.

No.

AFFIX LAND SURVEYOR SEAL

(I) I, *Greg FAUERBACH* CERTIFY THAT THE LOCATION SHOWN ON THIS RECORD WAS DETERMINED BY ME OR UNDER MY DIRECTION AND CONTROL AND THAT THIS U.S. PUBLIC LAND SURVEY MONUMENT RECORD IS CORRECT AND COMPLETE TO THE BEST OF MY KNOWLEDGE AND BELIEF.

Greg A. Faerbach *4/17/18*
SIGNATURE DATE



51518

CERTIFICATE

I, Bryan H. Meyer, do hereby certify that on the 2nd day of December 1992, I found (evidence) ~~(no evidence)~~ of the West 1/4 corner of Section 35, T 15 N, R 1 E Fourth Principal Meridian, and I re-established said corner according to the Wisconsin Statutes as shown and described hereon.

Dated this 2nd day of Dec. 1992.

Bryan H. Meyer

Deputy County Surveyor

CERTIFIED LAND CORNER

History of corner establishment since Original Government Survey

No recorded history since the Original Government Survey.

Description of corner evidence found:

I accepted the intersection of the centerline of Eureka Lane with the centerline projection of 32nd Avenue from the North as the best available evidence.

No. 118

41501342000



Bryan H. Meyer
H. A. Sime and Associates
P. O. Box 705
Tomah, Wisconsin 54660
Phone: (608)-372-5392

COUNTY SURVEYOR FORM NO. 1

Description of corner and witness monuments, references and accessories used to perpetuate the original or re-established location of this corner:

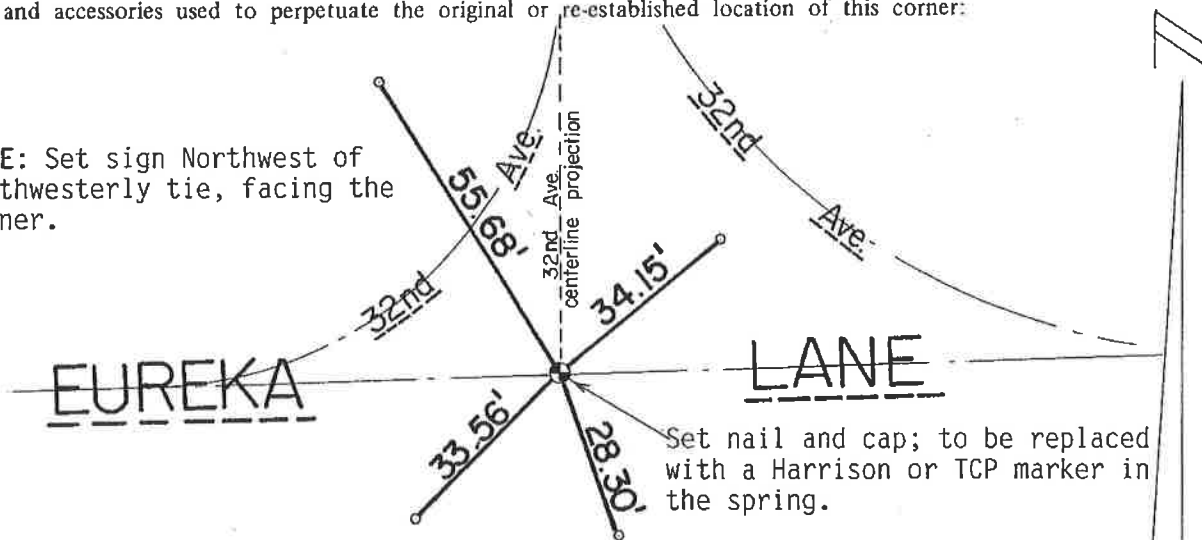
Crew: Meyer, Cooper
Date: December 2, 1992

Witnesses to corner location:

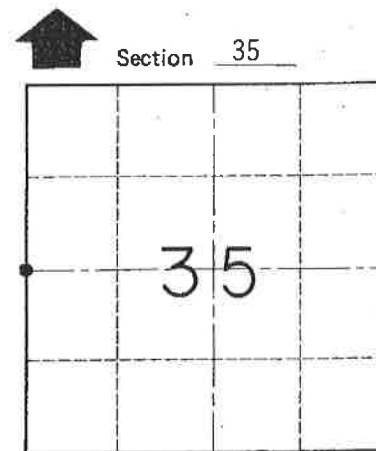
Bryan H. Meyer

Donald A. Cooper

NOTE: Set sign Northwest of Northwesterly tie, facing the corner.



o = Set 3/4" x 24" round iron bar



● = LOCATION CORNER

T 15 N R 1 E
WISCONSIN

SURVEY CONTROL ORDER

Horizontal	_____
Vertical	_____

WISCONSIN COORDINATE SYSTEM

Corner	East (X)	North (Y)	Elevation (Z)	Zone
Control Sta. Name				

~~City, Village or Town~~ of Glendale

County of Monroe