

VERNON COUNTY CERTIFIED U.S. PUBLIC LAND SURVEY MONUMENT RECORD

INSTRUCTIONS: THIS RECORD SHALL SHOW THE LOCATION OF THE CORNER AND SHALL INCLUDE ALL OF THE FOLLOWING ELEMENTS (A-I)

(A) IDENTIFY THE CORNER BY REFERENCE TO THE U.S. PUBLIC LAND SURVEY SYSTEM

■ = CORNER MONUMENT RESTORED

WITNESSES TO CORNER LOCATION:

- 1) Robert M. Lampman
- 2) Jessica A. Zamor

VERNON COUNTY COORDINATES - NAD83(1991) - SURVEY FEET

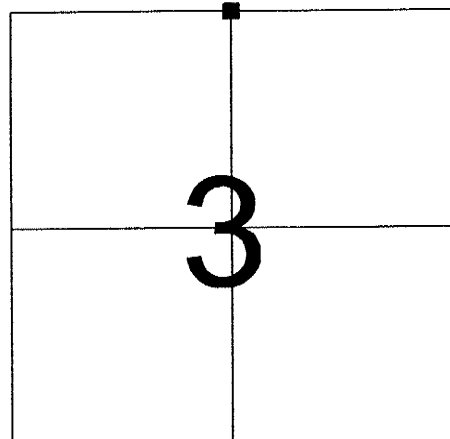
NORTHING: 212464.922

EASTING: 841331.753

MONROE COUNTY COORDINATES - NAD83(1991) - SURVEY FEET

NORTHING: 301429.561

EASTING: 744883.485



SECTION 3
TOWN 14 NORTH, RANGE 1 EAST

(B) DESCRIBE ANY RECORD EVIDENCE, MONUMENT EVIDENCE, OCCUPATIONAL EVIDENCE, TESTIMONIAL EVIDENCE OR ANY OTHER MATERIAL EVIDENCE YOU CONSIDERED, AND WHETHER THE MONUMENT WAS FOUND OR PLACED.

Accepted location of existing True Cast Products Monument at occupational corner as the best available evidence of the original corner location.

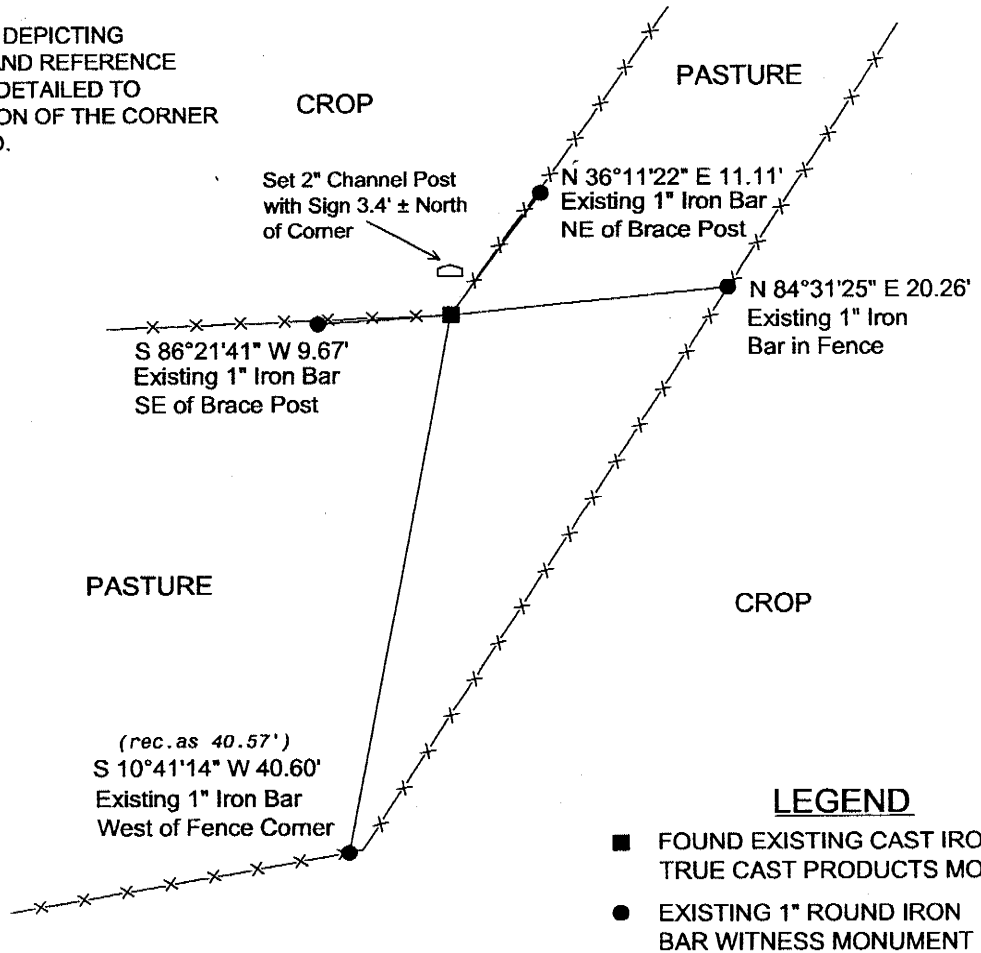
The east/west position of the monument was found to agree with the location of the occupied forty corner to the west and the existing monument at the Northwest corner of Section 3. Distances to both the Northeast and Northwest corners of Section 3 measure longer than original government distances. Said distances measure 2657.30 feet and 2670.86 feet respectively. Thus, the existing monument is located within 6.8 feet of a position established by a standard proration of distance.

The existing monument is located 26.93 feet north of a straight line between the Northeast and Northwest corners of Section 3. However, there is no evidence at the corner area to indicate that the monument should shift southerly. Also, occupation at the NW corner of the NE 1/4 of the NW 1/4 of Section 3 is approximately 6 feet northerly of a straight line between this existing monument and the existing monument at the NW corner of Section 3.

(C) IN THE PLAN VIEW DRAWING BELOW, PROVIDE REFERENCE TIES TO AT LEAST 4 WITNESS MONUMENTS OR, IF THE LOCATION IS WITHIN A MUNICIPALITY, TO AT LEAST 2 WITNESS MONUMENTS. (WITNESS MONUMENTS SHALL BE MADE OF CONCRETE, NATURAL STONE, IRON, OR OTHER EQUALLY DURABLE MATERIAL.) DESCRIBE WITNESS MONUMENTS.

(D) SHOW A PLAN VIEW DRAWING, DEPICTING THE RELEVANT MONUMENTS AND REFERENCE TIES, WHICH IS SUFFICIENTLY DETAILED TO ENABLE ACCURATE RELOCATION OF THE CORNER MONUMENT IF IT IS DISTURBED.

NOT TO SCALE



(E) DESCRIBE ANY MATERIAL DISCREPANCY BETWEEN THE LOCATION OF THE CORNER AS RESTORED OR REESTABLISHED AND THE LOCATION OF THAT CORNER AS PREVIOUSLY RESTORED OR REESTABLISHED BY DISTANCE AND DIRECTION. SHOW THE DISCREPANCY ON THE PLAN VIEW DRAWING UNDER (D), ABOVE. SHOW THE DISTANCES BETWEEN THE CORNER AS PREVIOUSLY RESTORED OR REESTABLISHED AND (1) THE CORNER AS RESTORED OR REESTABLISHED, AND (2) TO AT LEAST 2 OF THE WITNESS MONUMENTS AS SHOWN ON THE DRAWING IN (D), ABOVE.

N/A

(F) WAS THE CORNER RESTORED THROUGH ACCEPTANCE OF (1) AN OBLITERATED EVIDENCE LOCATION, OR (2) A FOUND PERPETUATED LOCATION?

(2) A FOUND PERPETUATED LOCATION

(G & H) WAS THE CORNER REESTABLISHED THROUGH LOST CORNER PROPORTIONATE METHODS? IF SO SHOW THE METHOD, INCLUDING THE DIRECTIONS AND DISTANCES TO OTHER PUBLIC LAND SURVEY CORNERS USED AS EVIDENCE OR USED FOR PROPORTIONING IN DETERMINING THE CORNER LOCATION.

N/A

(**) ANY ADDITIONAL INFORMATION RELATED TO CORNER LOCATION

CORNER HISTORY:

-Original government corner location established by Stuntz & Sargent in 1851.

-W.H.Knower reestablished a corner location by agreement and lists one new witness as part of a survey of the North/South one-quarter line of Section 3, T14N, R1E dated July 1888.

-Lawrence A. Feddersen set a True Cast Products Monument at the corner and prepared a tie sheet dated August 14, 1995. Feddersen reestablished the corner location by acceptance of an occupied fence corner. (Intersection of east/west fence with northeast/southwest property line fence) Lawrence A. Feddersen shows the corner monument on Monroe County C.S.M.s recorded at Volume 10, Page 94 and Volume 10, Page 130. Said surveys are also dated August of 1995.

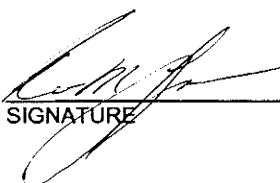
-Richard T. Blakeslee shows an existing 3" dia. cast monument found in place on Vernon County Certified Survey Map No. 71, Volume 4, Page 165, Document No. 366451 dated April of 1998.

AFFIX LAND SURVEYOR SEAL

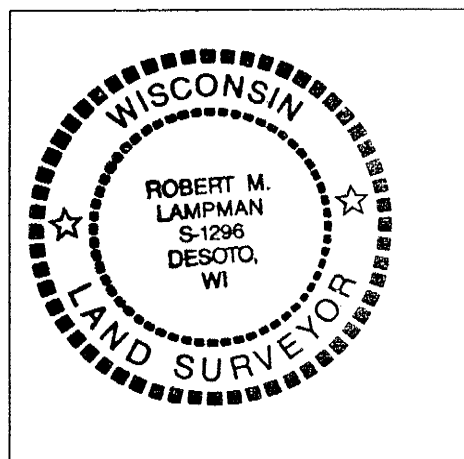
(I) I, ROBERT M. LAMPMAN, CERTIFY THAT THE LOCATION SHOWN ON THIS RECORD WAS DETERMINED BY ME OR UNDER MY DIRECTION AND CONTROL AND THAT THIS U.S. PUBLIC LAND SURVEY MONUMENT RECORD IS CORRECT AND COMPLETE TO THE BEST OF MY KNOWLEDGE AND BELIEF.

SIGNATURE

DATE



3-10-04



41501340020

I, Lawrence A. Feddersen, do hereby certify that on the sixteenth day of July 19 95, I found (evidence) ~~(no evidence)~~ of the South Quarter corner of Section 34, T 15 N, R 1 E Fourth Principal Meridian, and I re-established said corner according to the Wisconsin Statutes as shown and described hereon.

Dated this 14 day of AUGUST 19 95.

Lawrence A. Feddersen

Registered Land Surveyor

Title

History of corner establishment since Original Government Survey

No record of re-established corner.

Description of corner evidence found:

Accepted the intersection of a East-West fence with a Northeast-Southwest deed fence as best available evidence.

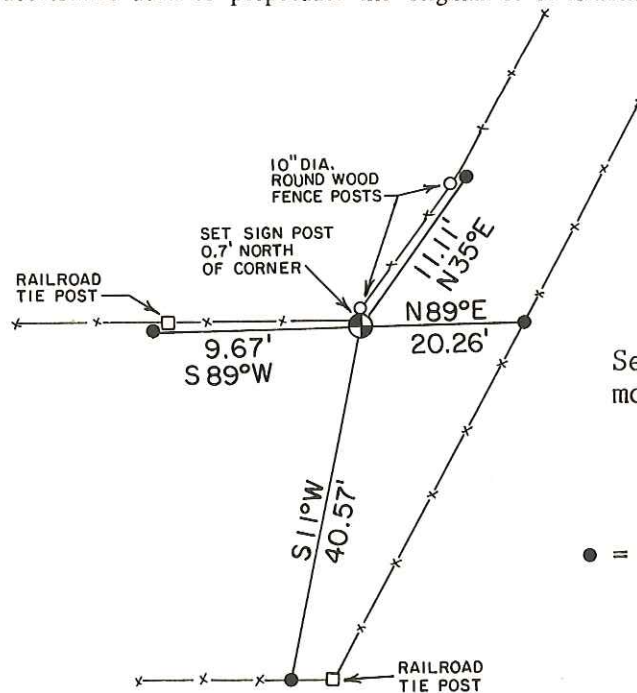
Description of corner and witness monuments, references and accessories used to perpetuate the original or re-established location of this corner:

Witnesses to corner location:

Lawrence A. Feddersen

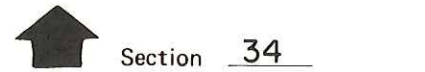
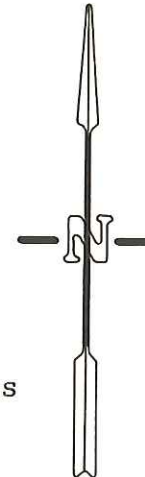
Douglas J. Malliet

Timothy J. Jeatran



Set cast iron True Cast Products monument flush at corner

● = Set 1"x 24" round iron bar.



● = LOCATION CORNER

T 15 N R 1 E

WISCONSIN

SURVEY CONTROL ORDER

Horizontal	_____
Vertical	_____

WISCONSIN COORDINATE SYSTEM

Corner	East (X)	North (Y)	Elevation (Z)	Zone
Control Sta. Name				

XXXXXXXXXX Town of Glendale

County of Monroe

COUNTY SURVEYOR FORM NO. 1