

VERNON COUNTY CERTIFIED U.S. PUBLIC LAND SURVEY MONUMENT RECORD

INSTRUCTIONS: THIS RECORD SHALL SHOW THE LOCATION OF THE CORNER AND SHALL INCLUDE ALL OF THE FOLLOWING ELEMENTS (A-I)

(A) IDENTIFY THE CORNER BY REFERENCE TO THE U.S. PUBLIC LAND SURVEY SYSTEM

■ = CORNER MONUMENT RESTORED

WITNESSES TO CORNER LOCATION:

- 1) Robert M. Lampman
- 2) Jessica A. Zamor

VERNON COUNTY COORDINATES - NAD83(1991) - SURVEY FEET

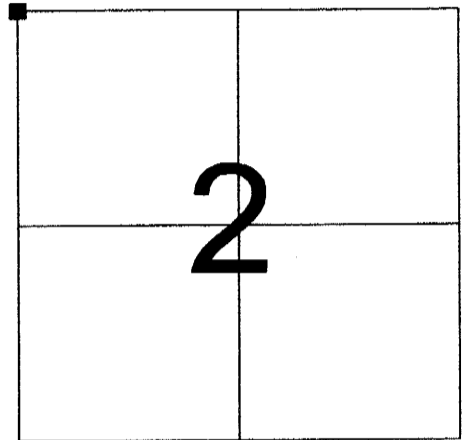
NORTHING: 212662.617

EASTING: 843981.687

MONROE COUNTY COORDINATES - NAD83(1991) - SURVEY FEET

NORTHING: 301622.812

EASTING: 747533.773



SECTION 2
TOWN 14 NORTH, RANGE 1 EAST

(B) DESCRIBE ANY RECORD EVIDENCE, MONUMENT EVIDENCE, OCCUPATIONAL EVIDENCE, TESTIMONIAL EVIDENCE OR ANY OTHER MATERIAL EVIDENCE YOU CONSIDERED, AND WHETHER THE MONUMENT WAS FOUND OR PLACED.

Accepted location of existing True Cast Products Monument at corner. The existing corner monument was established by Lawrence A. Feddersen in August of 1995. Feddersen reestablished the corner location by intersecting the direction of occupation running south from the W 1/4 corner of Section 35, T15N, R1E and the direction of occupation running west from the North 1/4 corner of Section 2. Feddersen's tie sheet shows the monument being located 2.8 feet east of an old fence line. Said fence line has since been cleared and rebuilt. The monument is now located 10.3 feet east of a new fence. An ash tree utilized as a reference by Feddersen remains as evidence that the position of the monument has not been altered. The location of the existing monument agrees extremely well with the occupied forty corner to the east. Said occupied corner being only approximately 1.5 feet north and 2.5 feet east of a forty corner by standard proration.

(C) IN THE PLAN VIEW DRAWING BELOW, PROVIDE REFERENCE TIES TO AT LEAST 4 WITNESS MONUMENTS OR, IF THE LOCATION IS WITHIN A MUNICIPALITY, TO AT LEAST 2 WITNESS MONUMENTS. (WITNESS MONUMENTS SHALL BE MADE OF CONCRETE, NATURAL STONE, IRON, OR OTHER EQUALLY DURABLE MATERIAL.) DESCRIBE WITNESS MONUMENTS.

(D) SHOW A PLAN VIEW DRAWING, DEPICTING THE RELEVANT MONUMENTS AND REFERENCE TIES, WHICH IS SUFFICIENTLY DETAILED TO ENABLE ACCURATE RELOCATION OF THE CORNER MONUMENT IF IT IS DISTURBED.

NOT TO SCALE

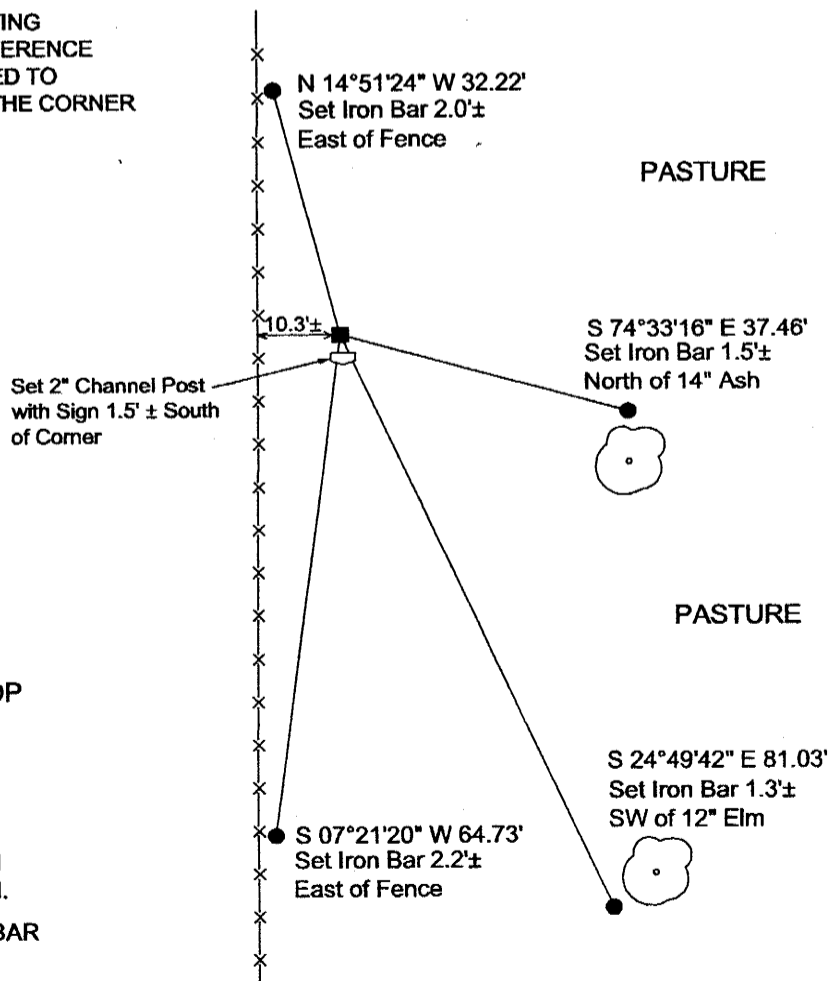


CROP

CROP

LEGEND

- FOUND EXISTING CAST IRON TRUE CAST PRODUCTS MON.
- SET 3/4" X 24" ROUND IRON BAR FOR WITNESS MONUMENT



(E) DESCRIBE ANY MATERIAL DISCREPANCY BETWEEN THE LOCATION OF THE CORNER AS RESTORED OR REESTABLISHED AND THE LOCATION OF THAT CORNER AS PREVIOUSLY RESTORED OR REESTABLISHED BY DISTANCE AND DIRECTION. SHOW THE DISCREPANCY ON THE PLAN VIEW DRAWING UNDER (D), ABOVE. SHOW THE DISTANCES BETWEEN THE CORNER AS PREVIOUSLY RESTORED OR REESTABLISHED AND (1) THE CORNER AS RESTORED OR REESTABLISHED, AND (2) TO AT LEAST 2 OF THE WITNESS MONUMENTS AS SHOWN ON THE DRAWING IN (D), ABOVE.

N/A

(F) WAS THE CORNER RESTORED THROUGH ACCEPTANCE OF (1) AN OBLITERATED EVIDENCE LOCATION, OR (2) A FOUND PERPETUATED LOCATION?

(2) A FOUND PERPETUATED LOCATION

(G & H) WAS THE CORNER REESTABLISHED THROUGH LOST CORNER PROPORTIONATE METHODS? IF SO SHOW THE METHOD, INCLUDING THE DIRECTIONS AND DISTANCES TO OTHER PUBLIC LAND SURVEY CORNERS USED AS EVIDENCE OR USED FOR PROPORTIONING IN DETERMINING THE CORNER LOCATION.

N/A

(**) ANY ADDITIONAL INFORMATION RELATED TO CORNER LOCATION

CORNER HISTORY:

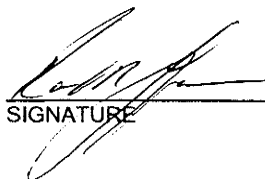
-Original government corner location established by Stuntz & Sargent in 1851.

-Lawrence A. Feddersen set a True Cast Products Monument at the corner and prepared a tie sheet dated August 9, 1995. Lawrence A. Feddersen shows the corner monument on Monroe County C.S.M.s recorded at Volume 10, Page 94 and Volume 10, Page 130. Said surveys are also dated August of 1995.

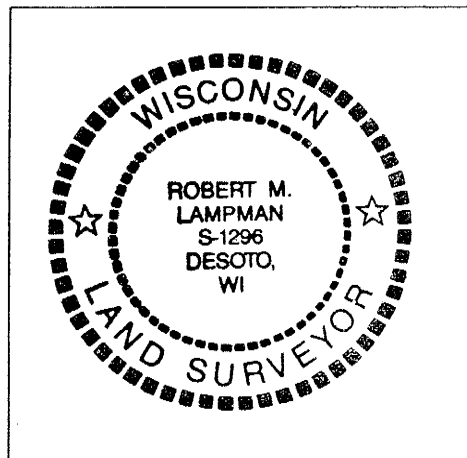
-Richard T. Blakeslee found a 3" diameter cast iron monument at the corner in April of 1998 as per Vernon County Certified Survey Map No. 71, Volume 4, Page 165, Document No. 366451.

AFFIX LAND SURVEYOR SEAL

(I) I, ROBERT M. LAMPMAN, CERTIFY THAT THE LOCATION SHOWN ON THIS RECORD WAS DETERMINED BY ME OR UNDER MY DIRECTION AND CONTROL AND THAT THIS U.S. PUBLIC LAND SURVEY MONUMENT RECORD IS CORRECT AND COMPLETE TO THE BEST OF MY KNOWLEDGE AND BELIEF.


SIGNATURE

3-10-04
DATE



4150134 0000

I, Lawrence A. Feddersen, do hereby certify that on the 8th day of August 19 95, I found ~~(evidence)~~ (no evidence) of the Southeast corner of Section 34, T 15 N, R 1 E Fourth Principal Meridian, and I re-established said corner according to the Wisconsin Statutes as shown and described hereon.

Dated this 9th day of August 1995.

Lawrence A. Feddersen

Registered Land Surveyor
Title

History of corner establishment since Original Government Survey

No record of corner restoration/re-establishment since the Original Government Survey.

Description of corner evidence found:

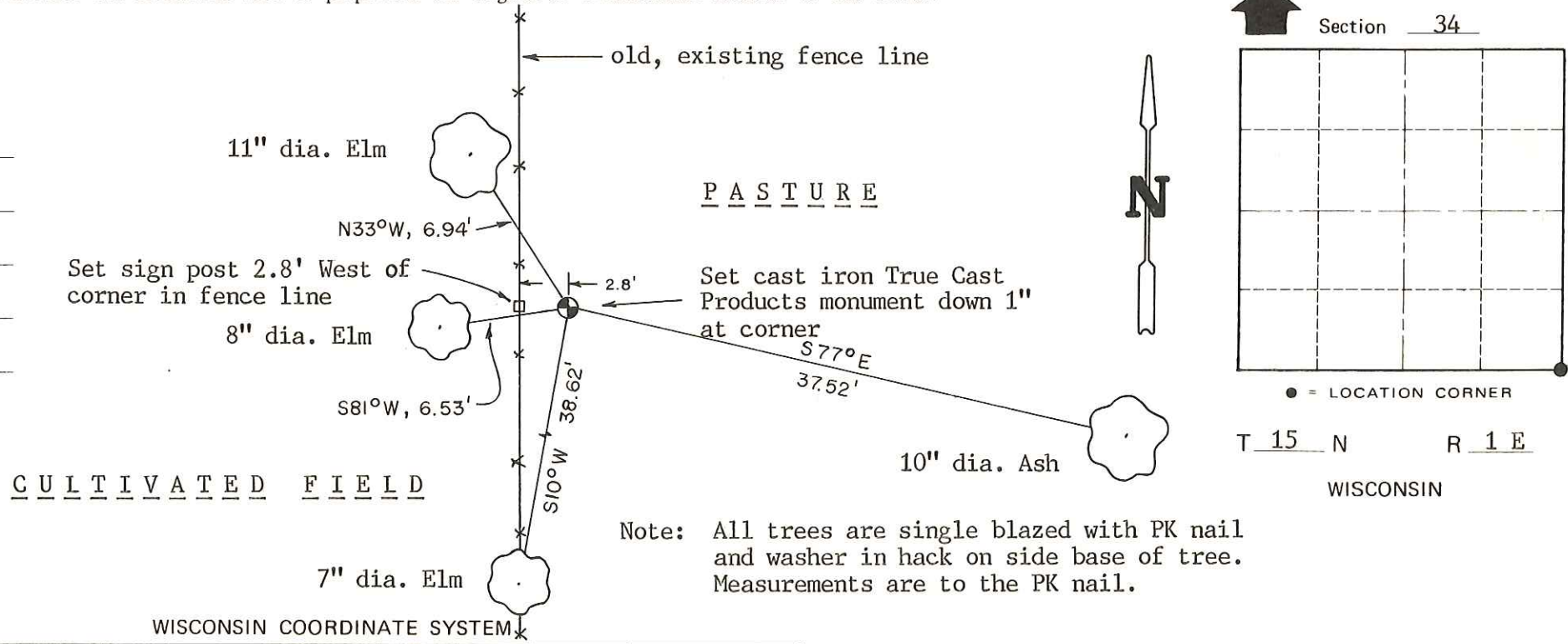
No evidence of a corner was found at this location. The corner was re-established by intersecting the southerly extension of a north-south line formed by using an existing monument at the E1/4 corner of said section and points in existing north-south fence line North of the corner location; and the westerly extension of a line formed by using an existing four-way fence intersection at the S1/4 corner of Section 35 of said township and an existing two-way fence corner intersection at the Southwest corner of the SE1/4-SW1/4 of Section 35.

COUNTY SURVEYOR FORM NO. 1

Description of corner and witness monuments, references and accessories used to perpetuate the original or re-established location of this corner:

Witnesses to corner location:

Lawrence A. Feddersen
Timothy J. Jeatran
Douglas J. Malliet



Note: All trees are single blazed with PK nail and washer in hack on side base of tree. Measurements are to the PK nail.

SURVEY CONTROL ORDER

Horizontal	_____
Vertical	_____

WISCONSIN COORDINATE SYSTEM

Corner	East (X)	North (Y)	Elevation (Z)	Zone
Control Sta. Name				

City, Village or Town of Glendale
County of Monroe