

CERTIFICATE

I, Lawrence A. Feddersen, do hereby certify that on the 4th day of August 19 95, I found ~~(evidence)~~ (no evidence) of the West Quarter corner of Section 34, T 15 N, R 1 E Fourth Principal Meridian, and I re-established said corner according to the Wisconsin Statutes as shown and described hereon.

Dated this 14 day of August 19 95.

Lawrence A. Feddersen

Registered Land Surveyor  
Title

CERTIFIED LAND CORNER

No. 117 (2)

41501332000

History of corner establishment since Original Government Survey

No record of corner restoration/re-establishment since the Original Government Survey

Description of corner evidence found:

No evidence of a corner was found at this location. The corner was re-established on line and halfway between the Northwest corner and Southwest corner of Section 34.

COUNTY SURVEYOR FORM NO. 1

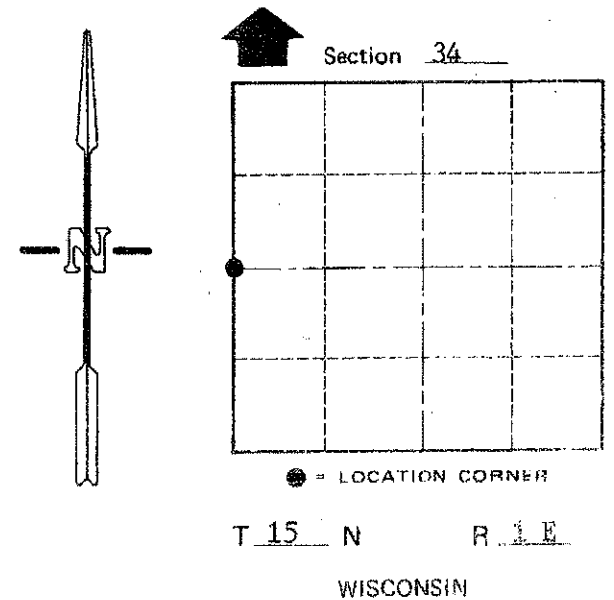
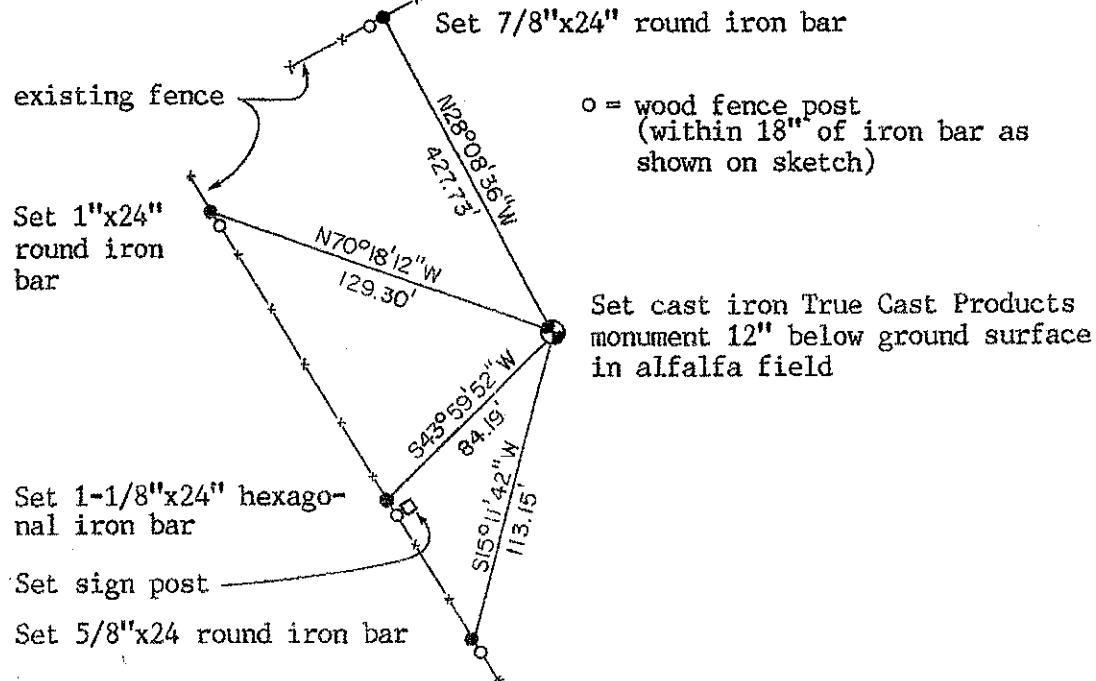
Description of corner and witness monuments, references and accessories used to perpetuate the original or re-established location of this corner:

Witnesses to corner location:

Lawrence A. Feddersen

Timothy J. Jeatran

Douglas J. Malliet



SURVEY CONTROL ORDER

Horizontal	_____
Vertical	_____

WISCONSIN COORDINATE SYSTEM

Corner	East (X)	North (Y)	Elevation (Z)	Adjustment NAD83 (1991)
Control Sta. Name Glendale SE, 16-151E	742208.52	303851.70		
	CO-X By Richard Blakeslee 10-10-11			

~~xxxxxxx~~ Town of Glendale

County of Monroe