

CERTIFICATE

I, Harley A. Sime, do hereby certify that on the 8th day of September 1981, I found (evidence) (~~re-established~~) of the E¹/₄ corner of Section 32, T 15 N, R 1 E Fourth Principal Meridian, and I re-established said corner according to the Wisconsin Statutes as shown and described hereon.

Dated this 21st day of Sept. 1981.

Harley A. Sime, R.L.S. 355

County Surveyor
Title

COUNTY SURVEYOR FORM NO. 1

Description of corner and witness monuments, references and accessories used to perpetuate the original or re-established location of this corner:

Witnesses to corner location:

- G. Dechant
- C. Pietz
- B. Meyer

Approved: HARLEY A. SIME
MONROE CO. SURVEYOR

SURVEY CONTROL ORDER

Horizontal	_____
Vertical	_____

WISCONSIN COORDINATE SYSTEM				
Corner	East (X)	North (Y)	Elevation (Z)	Adjustment NAD83(1991)
Glendale SE, 16-151E	736944.96	303406.81		
Control Sta. Name	CO-X By Richard Blakeslee 10-10-11			

CERTIFIED LAND CORNER

No. 116 (2)

41501322000

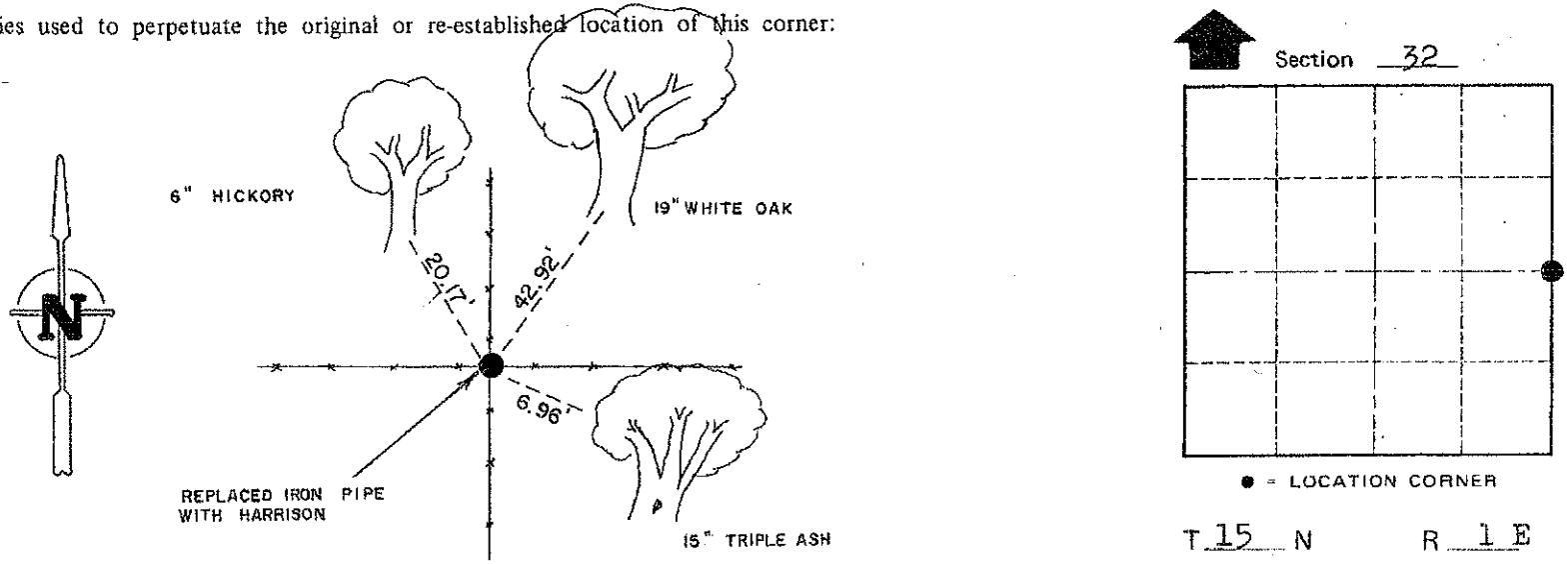
History of corner establishment since Original Government Survey

D. Marten found an unrecorded iron pipe at a four way fence corner in June of 1974. He accepted it as the corner as it fits conditions well.

Description of corner evidence found:

We found the iron pipe at the fence corner and replaced it with a Harrison Monument.

Replaced N/A With N/A
On 9/15/82 Crew: By Jung
Comments Fred Holden set a 3/4" pipe at this corner in May of 1904.



(Trees double blazed with nails set)

~~City of~~ Town Glendale
County of Monroe

WISCONSIN