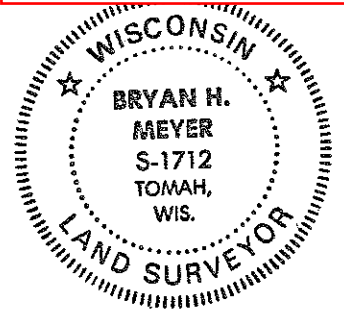


CERTIFICATE

CERTIFIED LAND CORNER

No. 109

41501290000



Bryan H. Meyer
 H. A. Sime and Associates
 P. O. Box 705
 Tomah, Wisconsin 54660
 Phone: (608)-372-5392

I, Bryan H. Meyer, do hereby certify that on the 2nd day of December 19 92, I found ~~evidence~~ (no evidence) of the Northwest corner of Section 33, T 15 N, R 1 E Fourth Principal Meridian, and I re-established said corner according to the Wisconsin Statutes as shown and described hereon.

Dated this 2nd day of Dec. 19 92.

Bryan H. Meyer

Deputy County Surveyor
Title

History of corner establishment since Original Government Survey

Fred Holden was here in May of 1904, found the original corner and struck a new bearing tree.

Description of corner evidence found:

I looked for but was unable to find Holden's bearing tree. I re-established this corner by double proportionate measure.

Description of corner and witness monuments, references and accessories used to perpetuate the original or re-established location of this corner:
 Crew: Meyer, Cooper
 Date: December 2, 1992

Witnesses to corner location:

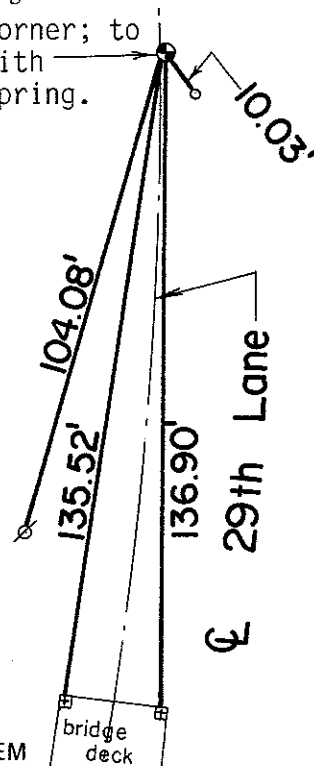
Bryan H. Meyer

Donald A. Cooper

Set nail at corner; to be replaced with Harrison in spring.

NOTE: Set sign on power pole facing the corner.

- ∅ = Set nail in power pole
- = Set 3/4"x24" iron bar
- ⊞ = Set chiselled cross in bridge deck

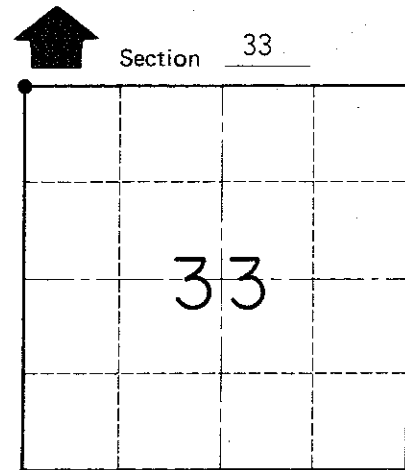


WISCONSIN COORDINATE SYSTEM

SURVEY CONTROL ORDER

Horizontal	_____
Vertical	_____

Corner	East (X)	North (Y)	Elevation (Z)	Zone
Control Sta. Name				



● = LOCATION CORNER
 T 15 N R 1 E
 WISCONSIN

COUNTY SURVEYOR FORM NO. 1

~~City, Village or~~ Town of Glendale
 County of Monroe