

CERTIFICATE

I, Bryan H. Meyer, do hereby certify that on the 27th day of July 19 92, I found (no evidence) of the West 1/4 corner of Section 27, T 15 N, R 1 E Fourth Principal Meridian, and I re-established said corner according to the Wisconsin Statutes as shown and described hereon.

Dated this 28th day of July 19 92.

*Bryan H. Meyer*

Deputy County Surveyor  
Title

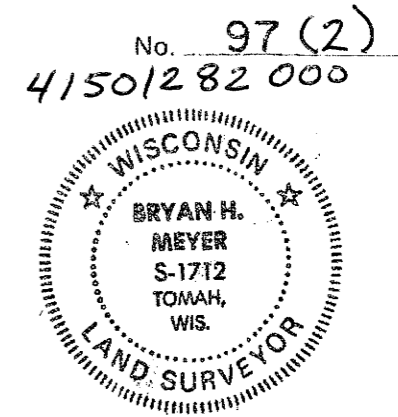
CERTIFIED LAND CORNER

History of corner establishment since Original Government Survey

Fred Holden was here in March and April of 1905 and set a sleigh shoe.

Description of corner evidence found:

I made an extensive search for Holden's sleigh shoe, but could not find it. I re-established this corner on line and equidistant between the Northwest and Southwest corners of Section 27, as per law.



H. A. Sime and Associates  
P. O. Box 705  
Tomah, Wisconsin 54660  
Phone: (608)-372-5392

COUNTY SURVEYOR FORM NO. 1

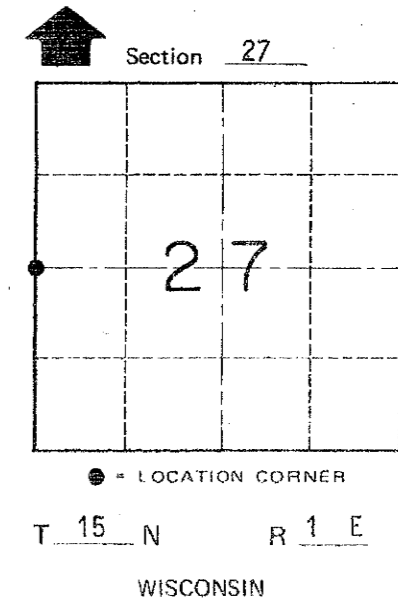
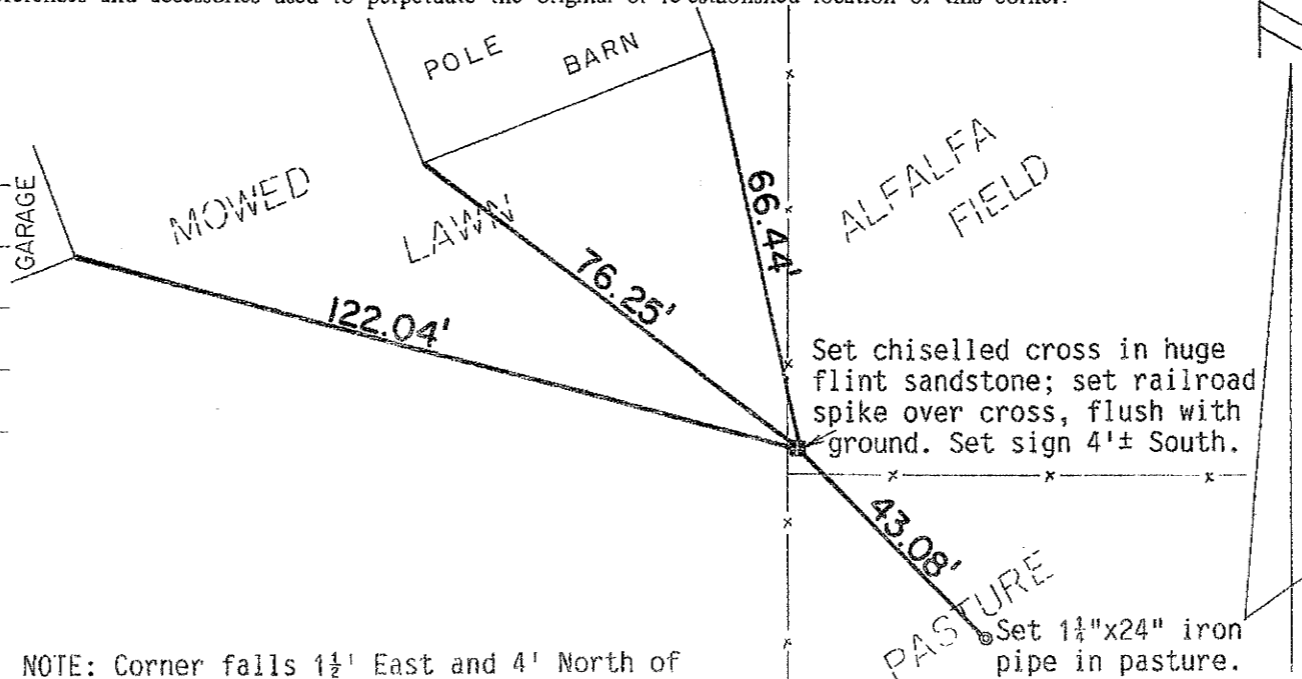
Description of corner and witness monuments, references and accessories used to perpetuate the original or re-established location of this corner:

Crew: Kostka, Kenworthy, Meyer  
Date: July 27, 1992  
Weather: Partly Cloudy, 75°±  
Witnesses to corner location:

Brent Kostka

John Kenworthy

Bryan H. Meyer



SURVEY CONTROL ORDER

Horizontal	_____
Vertical	_____

NOTE: Corner falls 1 1/2' East and 4' North of fence corner.

WISCONSIN COORDINATE SYSTEM

Corner	East (X)	North (Y)	Elevation (Z)	Zone Adjustment
	742166.98	309133.84		NAD83(1991)
Control Sta. Name	Glendale SE, 16-151E CO-X by Richard Blakeslee 10-10-11			

City, Village or Town of Glendale  
County of Monroe