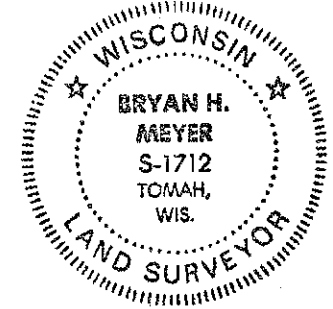


CERTIFICATE

CERTIFIED LAND CORNER

No. 108 (2)

41501280020



I, Bryan H. Meyer, do hereby certify that on the 5th day of August 1992, I found (evidence) ~~XXXXXXXXXX~~ of the North 1/4 corner of Section 33, T 15 N, R 1 E Fourth Principal Meridian, and I re-established said corner according to the Wisconsin Statutes as shown and described hereon.

History of corner establishment since Original Government Survey

Nothing recorded.

Description of corner evidence found:

I accepted the intersection of the centerline of a town road known as Eureka Avenue with the existing fence lines from the North and South as the best available evidence of the corner location.

Dated this 31st day of Dec. 1992.

*Bryan H. Meyer*

Deputy County Surveyor  
Title

H. A. Sime and Associates  
P. O. Box 705  
Tomah, Wisconsin 54660  
Phone: (608)-372-5392

COUNTY SURVEYOR FORM NO. 1

Description of corner and witness monuments, references and accessories used to perpetuate the original or re-established location of this corner:

Crew: Meyer, Kostka  
Date: August 5, 1992

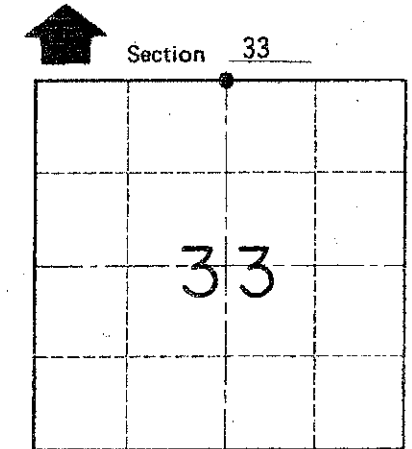
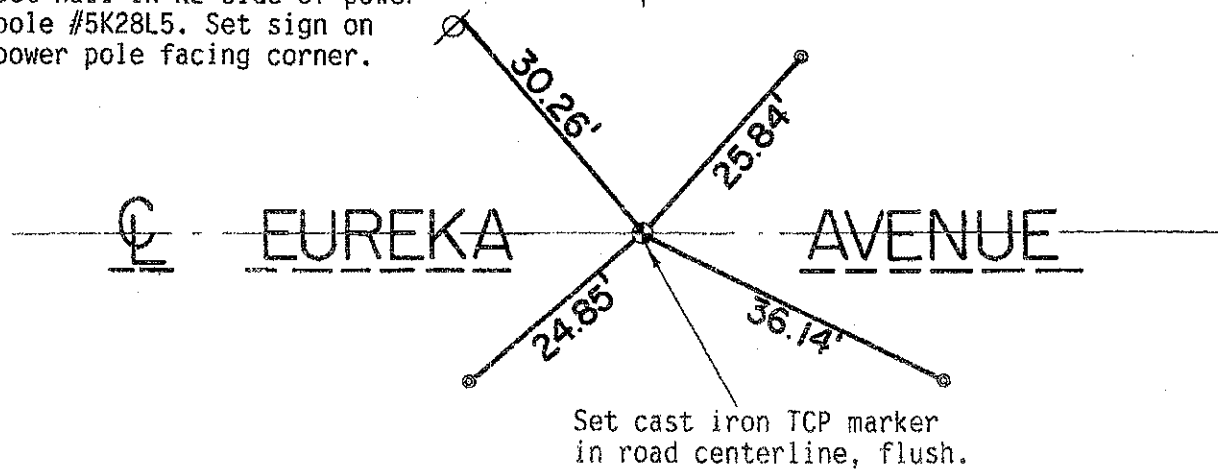
Witnesses to corner location:

Bryan H. Meyer

Brent Kostka

Set nail in NE side of power pole #5K28L5. Set sign on power pole facing corner.

● = Set 1 1/4" x 24" iron pipe in ditch centerline



● = LOCATION CORNER  
T 15 N R 1 E  
WISCONSIN

SURVEY CONTROL ORDER

Horizontal	
Vertical	

WISCONSIN COORDINATE SYSTEM

Corner	East (X)	North (Y)	Elevation (Z)	Adjustment NAD83(1991)
Control Sta. Name Glendale SE, 16-151E	739568.17	306234.15		
	CO-X by Richard Blakeslee 10-10-11			

~~Village~~ Town of Glendale

County of Monroe