

41501270000

I, William C. Jung, do hereby certify that on the 19th day of May 1981 I found (evidence) (~~was evidence~~) of the S.E. corner of Section 27, T 15 N, R 1 E Fourth Principal Meridian, and I re-established said corner according to the Wisconsin Statutes as shown and described hereon.

History of corner establishment since Original Government Survey

Fred Holden was at this corner in March and April of 1905.

Dated this 15 day of Jan. 1982

William C. Jung

William C. Jung, R.L.S. 1323
Title

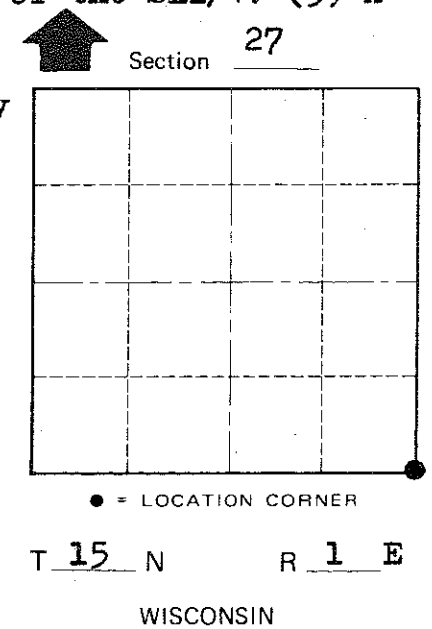
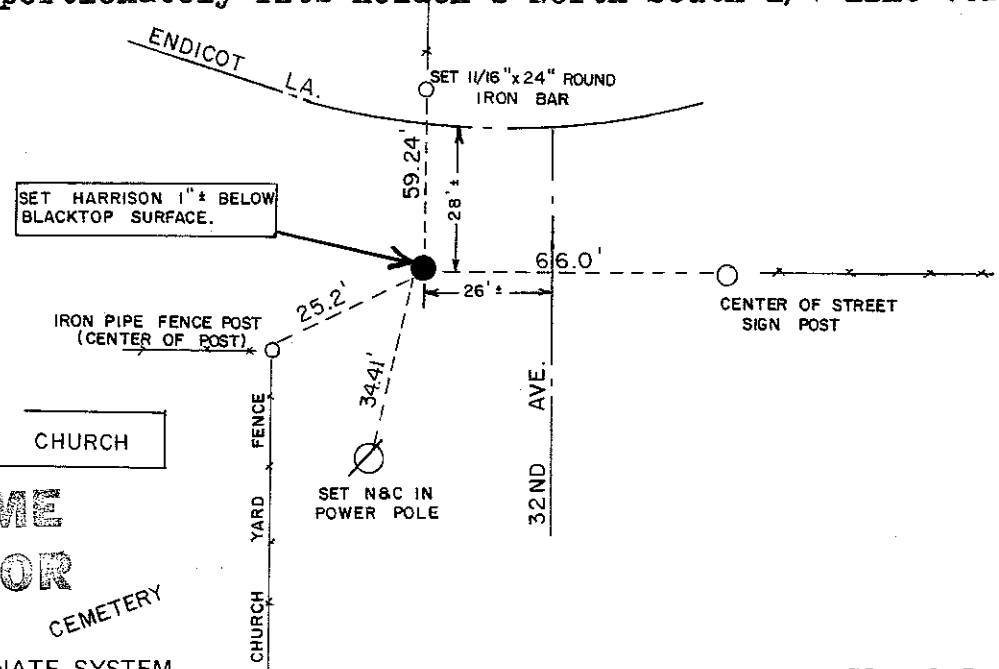
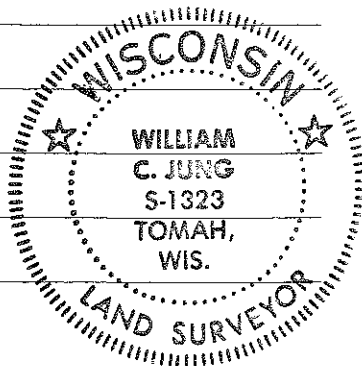
Description of corner evidence found:

I projected the North line fence South and intersected it with the East line fence projected West. I accepted this occupied location as the best available evidence of the original corner and Holden's corner after analyzing the field data. Also: (1) I found an old well established corner post 3/4 mile to the West of this section corner. The distance to this post fits the original distance within 4'+. (2) I measured 1/4 mile North from this section corner and found an iron monument at an old fence corner. It appears to be Holden's old corner. I rough chained a distance of 1328'+. This distance fits Holden's North-South forty distances on the East line of the NE1/4. He found all three original corners on the East line of Section 27. If the original Surveyors measured 1328'+ per 1/4 mile on the East line of the NE1/4, then it also goes that they would have measured the same on each 1/4 mile on the East side of the SE1/4. (3) A

Description of corner and witness monuments, references and accessories used to perpetuate the original or re-established location of this corner: close study of aerial photos of the surrounding sections shows this location to fit existing evidence well. (4) Using this corner and the computed direction to the West, and then computing the S1/4 corner, it is found that the computed North-South 1/4 line proportionately fits Holden's North-South 1/4 line very well. Witnesses to corner location: well for distance and direction.

Jung

Pietz



Approved: **HARLEY A. SIME**
MONROE CO. SURVEYOR

SURVEY CONTROL ORDER

Horizontal	_____
Vertical	_____

WISCONSIN COORDINATE SYSTEM

Corner	East (X)	North (Y)	Elevation (Z)	Zone
Control Sta. Name				

City, Village or Town Glendale
County of Monroe Wisconsin

COUNTY SURVEYOR FORM NO. 1