

CERTIFICATE

I, Bryan H. Meyer, do hereby certify that on the 27th day of July 19 92, I found (evidence) ~~no evidence~~ of the South 1/4 corner of Section 27, T 15 N, R 1 E Fourth Principal Meridian, and I re-established said corner according to the Wisconsin Statutes as shown and described hereon.

Dated this 28th day of July 19 92.

Bryan H. Meyer

Deputy County Surveyor
Title

CERTIFIED LAND CORNER

History of corner establishment since Original Government Survey

James J. Carroll was here in May of 1987 and set a nail at a fence corner.

Description of corner evidence found:

I found a nail at a four-way fence corner and accepted it as the corner.

No. 104

41501260020



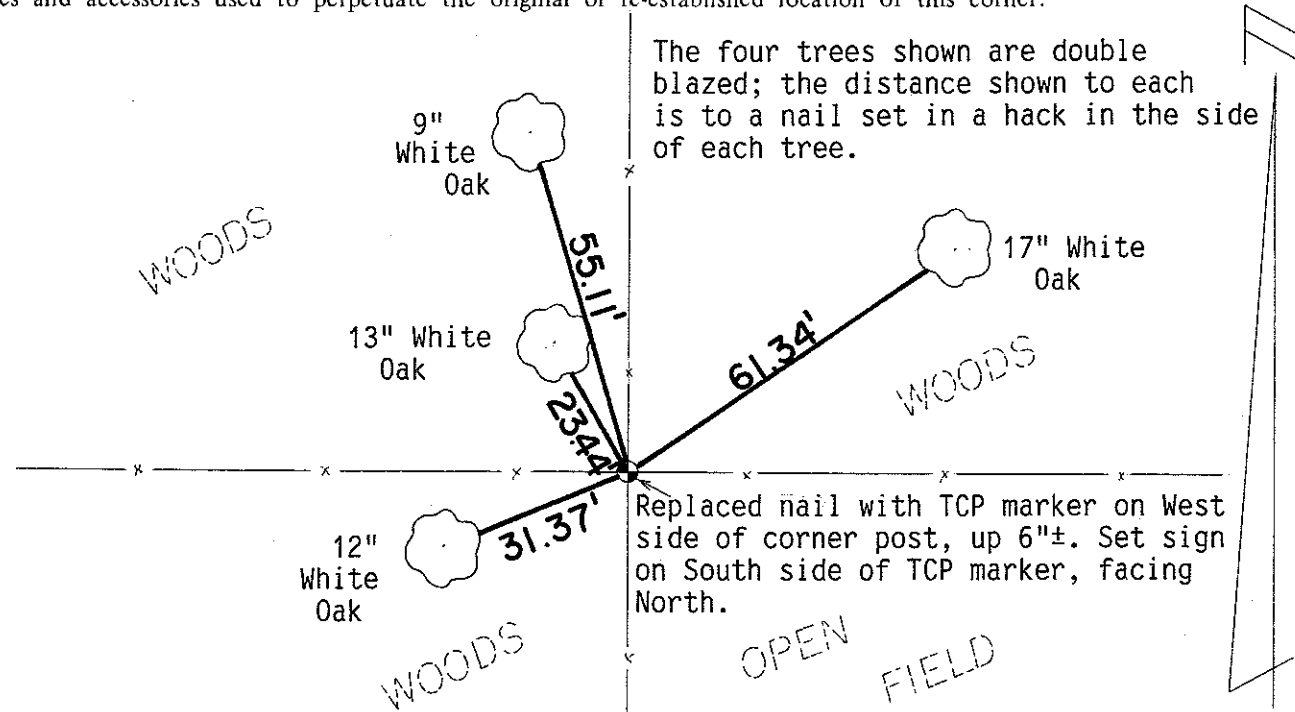
H. A. Sime and Associates
P. O. Box 705
Tomah, Wisconsin 54660
Phone: (608)-372-5392

COUNTY SURVEYOR FORM NO. 1

Description of corner and witness monuments, references and accessories used to perpetuate the original or re-established location of this corner:

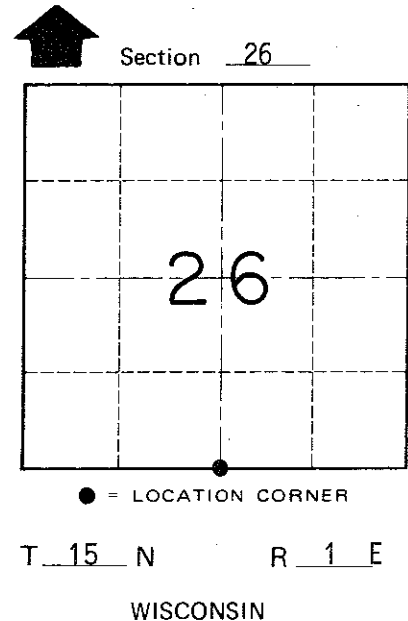
Crew: Meyer, Kenworthy, Kostka
Date: July 27, 1992
Weather: Partly Cloudy, 75°±
Witnesses to corner location:

Bryan H. Meyer
John Kenworthy
Brent Kostka



The four trees shown are double blazed; the distance shown to each is to a nail set in a hack in the side of each tree.

Replaced nail with TCP marker on West side of corner post, up 6"±. Set sign on South side of TCP marker, facing North.



SURVEY CONTROL ORDER

Horizontal	_____
Vertical	_____

WISCONSIN COORDINATE SYSTEM

Corner	East (X)	North (Y)	Elevation (Z)	Zone
Control Sta. Name				

~~City, Village or~~ Town of Glendale
County of Monroe