

JUNEAU COUNTY SURVEY MONUMENT RECORD

CORNER NO: 101
SECTION 31
TOWN 15N
RANGE 2E

TYPE OF MONUMENT: STANDARD HARRISON MONUMENT FOUND

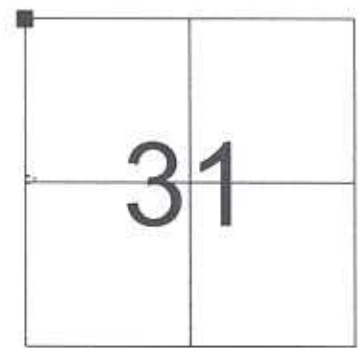
JUNEAU COUNTY COORDINATES
NORTHING: 138,426.71
EASTING: 400,473.20

■ = CORNER MONUMENT RESTORED

BASIS FOR MONUMENT LOCATION
(USE REVERSE SIDE IF NECESSARY)

SHOW INFO SUCH AS: HISTORY OF CORNER, WITH REFERENCE TO VOLUME AND PAGE DATES, SURVEYOR; EXACT DESCRIPTION OF MONUMENT PLACED OR FOUND, IF LOCATION COMPUTED, BY TAPED OR EDM TRAVERSE; LANDOWNER REMARKS, ETC.

STANDARD HARRISON MONUMENT FOUND AS PER TIE SHEET DATED 2/15/1988 BY JAMES J. CARROLL.



LOCATION

LEGEND

- = STANDARD HARRISON MONUMENT FOUND
- = 3/4" X 24" IRON ROD SET
- = 3/4" DIAMETER IRON ROD FOUND
- () = PREVIOUSLY RECORDED AS



CERTIFIED CORRECT

Patrick J. Dederich
REGISTERED LAND SURVEYOR

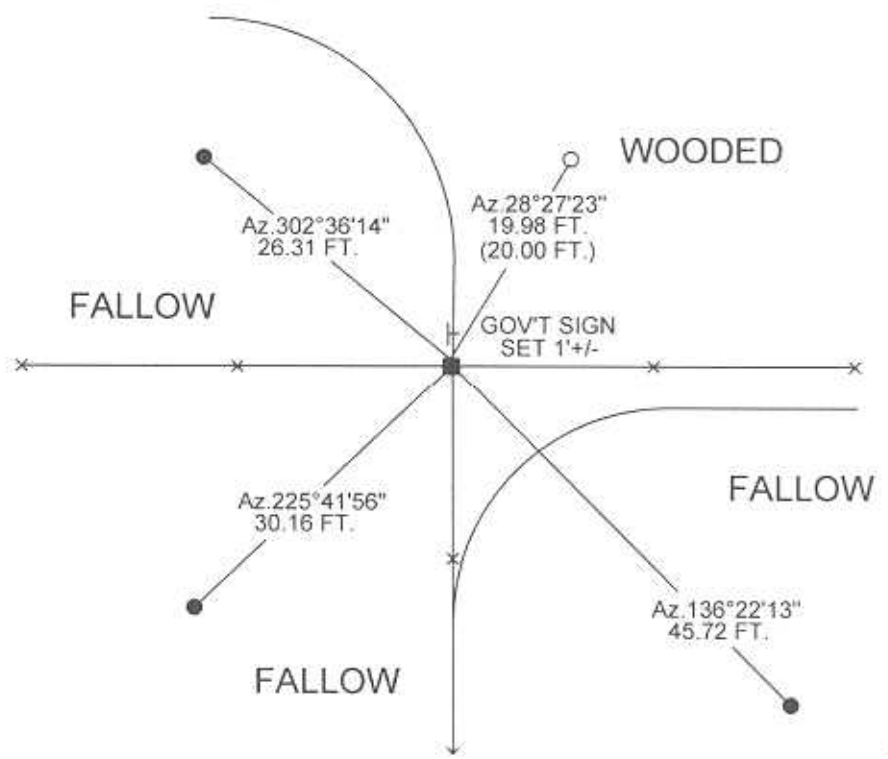
DATE 9/14/2005

TIE SKETCH
(SHOW AT LEAST FOUR TIES)

NOT TO SCALE



BEARINGS ARE BASED ON THE JUNEAU COUNTY COORDINATE SYSTEM UNLESS OTHERWISE NOTED



JUNEAU COUNTY

Survey Monument Record

TYPE OF MONUMENT: HARRISON

STATE PLANE COORDINATES: N _____

E _____

ELEVATION — M.S.L. DATUM: _____

THETA ANGLE: _____

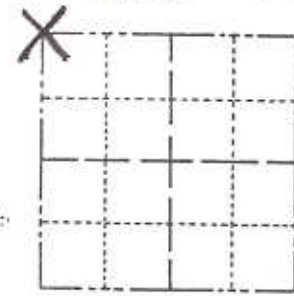
FIELD BOOK: _____ PAGE _____

CORNER NO. 101

SECTION 31

TOWN 15 N

RANGE 2 E



LOCATION
(Indicated by 'X')

SEAL:



BASIS FOR MONUMENT LOCATION

(Use reverse side if necessary)

Show info such as: History of corner, with reference to Vol. and pg. dates, surveyor; exact description of monument replaced; if location computed, by taped or EDM traverse; landowner remarks, etc.

SET @ FENCE CORNER
FOUND 1/2" SQ. X 20" ROD DISTURBED
@ CORNER

Accepted as the true
corner location

CERTIFIED CORRECT.

James J. Carrol
Registered Land Surveyor
DATE: 2/15/88

TIE SKETCH

(Show at least four ties)

