

JUNEAU COUNTY SURVEY MONUMENT RECORD

CORNER NO. 74
SECTION 19
TOWN 15N.
RANGE 2E.

TYPE OF MONUMENT: 2 1/2" DIAMETER CAPPED IRON PIPE

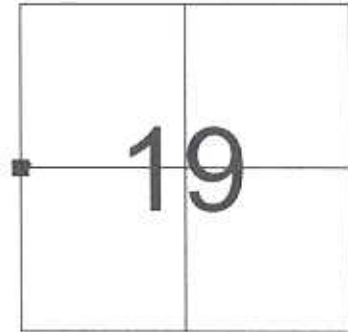
JUNEAU COUNTY COORDINATES
NORTHING: 146,343.99
EASTING: 400,508.91

■ = CORNER MONUMENT RESTORED

BASIS FOR MONUMENT LOCATION
(USE REVERSE SIDE IF NECESSARY)

SHOW INFO SUCH AS: HISTORY OF CORNER; WITH REFERENCE TO VOLUME AND PAGE DATES, SURVEYOR, EXACT DESCRIPTION OF MONUMENT PLACED OR FOUND, IF LOCATION COMPUTED, BY TAPED OR EDM TRAVERSE; LANDOWNER REMARKS, ETC.

2 1/2" CAPPED IRON PIPE FOUND AS PER TIE SHEET DATED 4/14/2001 BY PATRICK A. CARROLL.



LOCATION

LEGEND

- = 2 1/2" CAPPED IRON PIPE FOUND
- = 3/4" X 24" IRON ROD SET
- () = PREVIOUSLY RECORDED AS



CERTIFIED CORRECT

Patrick J. Dederich
REGISTERED LAND SURVEYOR

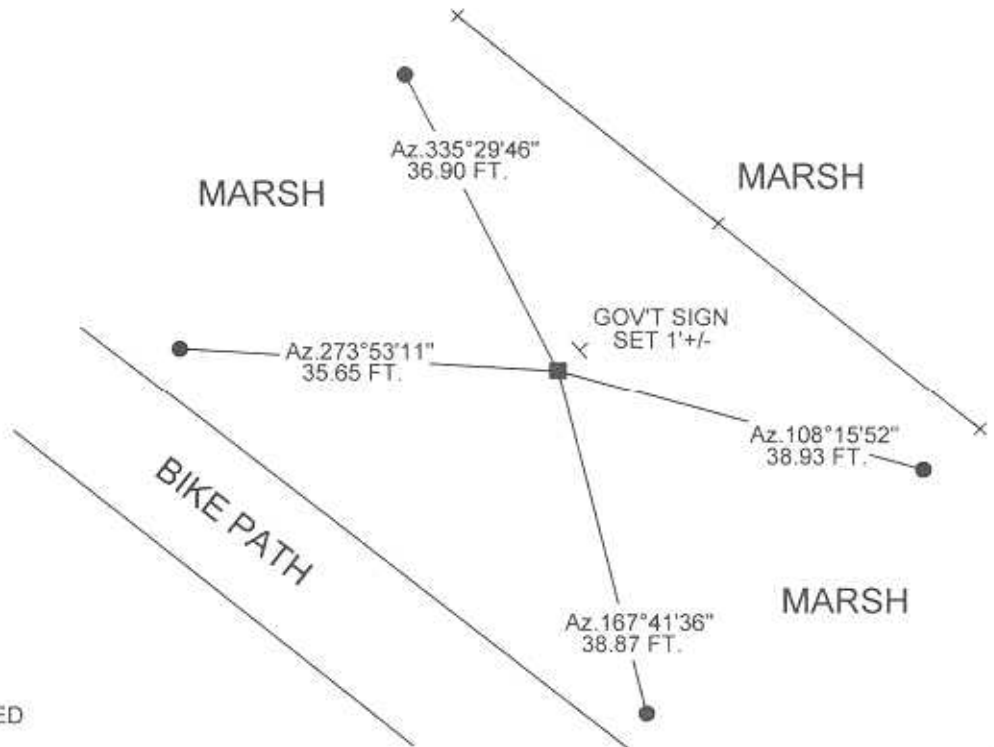
DATE 9/14/2005

TIE SKETCH
(SHOW AT LEAST FOUR TIES)

NOT TO SCALE



BEARINGS ARE BASED
ON THE JUNEAU COUNTY
COORDINATE SYSTEM
UNLESS OTHERWISE NOTED



JUNEAU COUNTY

Survey Monument Record

TYPE OF MONUMENT: 2 1/2" x 48" iron pipe (capped)

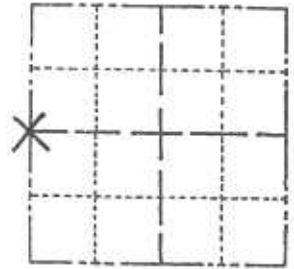
STATE PLANE COORDINATES: N _____ E _____

ELEVATION — M.S.L. DATUM: _____

THETA ANGLE: _____

FIELD BOOK: _____ PAGE _____

CORNER NO. 74
SECTION 19
TOWN 15
RANGE 2E



LOCATION (Indicated by 'X')

BASIS FOR MONUMENT LOCATION

(Use reverse side if necessary)

Show info such as: History of corner, with reference to Vol. and pg. dates, surveyor; exact description of monument replaced; if location computed, by taped or EDM traverse; landowner remarks, etc.

The west line of the FRAC. SW 1/4 of the SW 1/4 of Section 19 being 1319.81 feet was doubled over and set as the corner location.

SEAL:



CERTIFIED CORRECT:

Registered Land Surveyor

DATE: 04/14/01

TIE SKETCH

(Show at least four ties)

