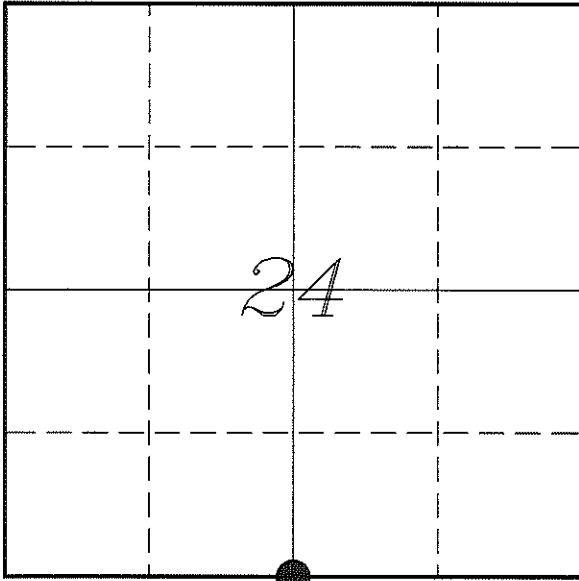


---

# U. S. PUBLIC LAND SURVEY MONUMENT RECORD

---

## SECTION 24, T15N, R1E, TOWN OF GLENDALE MONROE COUNTY, WISCONSIN



*LOCATION OF LANDMARK*

*Witnesses:* Laurence E Johns III

*Date:* 11 July 2013

<i>MONROE COUNTY COORDINATE SYSTEM</i>	
<i>Northing</i>	312671.461
<i>Easting</i>	755332.812
<i>Datum</i>	NAD 1983 (1991)
<i>Elevation</i>	
<i>Datum</i>	
<i>TYPE OF LANDMARK:</i>	
<i>Set Harrison Monument</i>	
<i>BEARINGS ARE REFERENCED TO:</i>	
<i>Monroe County Coordinates</i>	

---

*Describe any record evidence, monument evidence, testimonial evidence or any other material evidence you considered and whether the monument was found or restored through acceptance of an obliterated evidence location.*

No bearing trees of record were located.

The only occupation in the area is a straight East/West fence.

I could not find the 1" iron pipe set by Carroll. The computed location lands in a very large rock and about 3 feet South of the fence. It appears that his corner was determined by doubling over from a '40' corner set by James Carroll at the fence corner in October 1993.

I believe it was Pat Carroll's intention that this corner was to be on the fence.

This location would miss the '40' fence corner to the North by 1.9 feet.

I set this corner at the distance from the SW Corner called for by Carroll on the fence. I believe this to be the best available evidence of the original government corner.

---

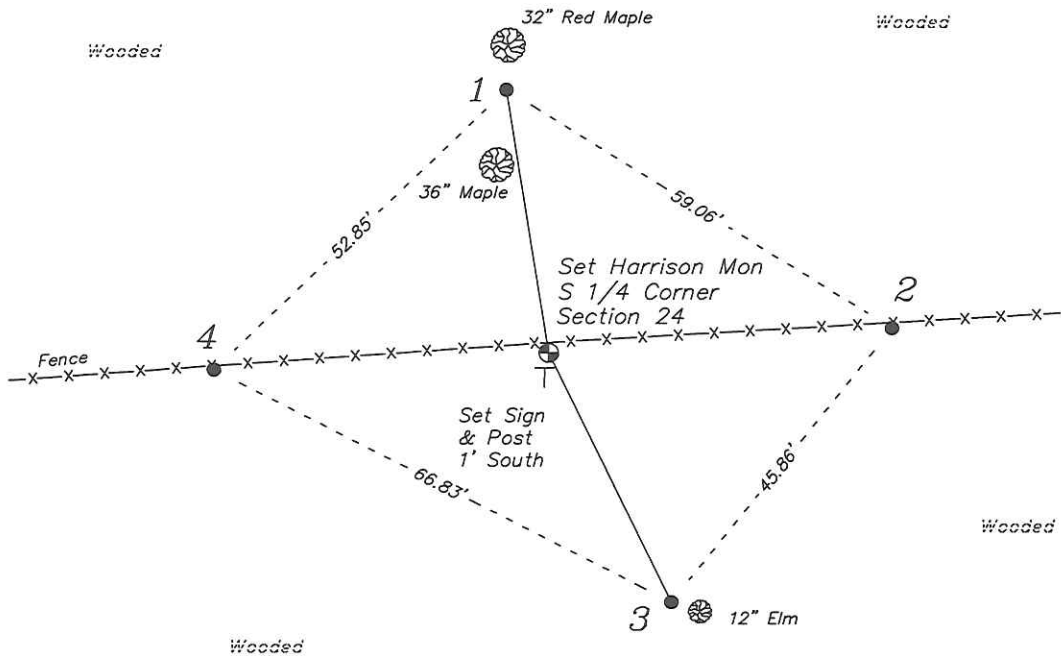
*Describe or show any material discrepancy between the location of the restored corner and that of the corner previously restored or re-established.*

John Davidson established this corner in January 1852.

Patrick Carroll was at this corner, in July 2007, during a survey in Sections 24 & 25. He shows that he set a 1" iron pipe.

## RECORD OF DURABLE WITNESS MONUMENTS

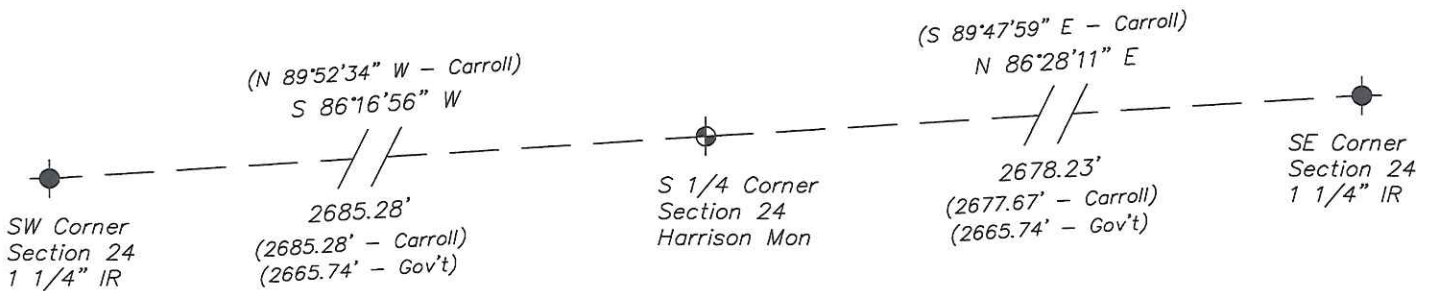
NO	DESCRIPTION	BEARING	DISTANCE
1	Set 3/4" x 18" Iron Rod 4' South of a 32" Red Maple	N 09°00'54" W	34.87'
2	Set 3/4" x 18" Iron Rod In Fence Line	N 85°54'23" E	44.77'
3	Set 3/4" x 18" Iron Rod 2' Northwest of a 12" Elm	S 26°05'08" E	36.26'
4	Set 3/4" x 18" Iron Rod In Fence Line	S 87°08'22" W	43.63'



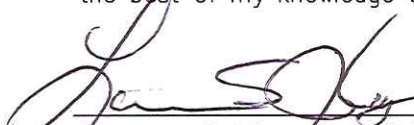
NOT TO SCALE

## PLAN VIEW DRAWING OF REFERENCE TIES

Map Showing Distance And Direction To Other Public Land Survey  
Corners Used For Re-Establishing The Corner



I, Laurence E Johns III RLS 2804, Registered Land Surveyor, hereby certify that the corner location shown on this record was determined by me or under my direction and control, and that this U.S. Public Land Survey Monument Record is correct and complete to the best of my knowledge and belief.

  
 Laurence E Johns III RLS 2804  
 Eagle Ridge Surveying, LLC  
 PO Box 213  
 Wilton, Wisconsin  
 11 July 2013



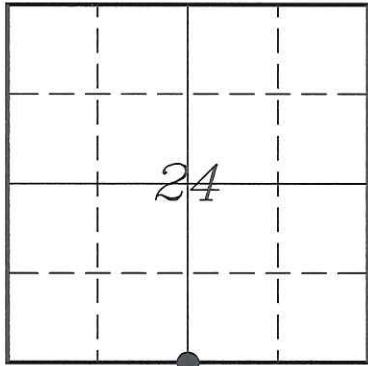
  
 11 JUL 13

---

U. S. PUBLIC LAND SURVEY MONUMENT RECORD  
'Addendum for Corner Photographs'

---

SECTION 24, T15N, R1E, TOWN OF GLENDALE  
MONROE COUNTY, WISCONSIN



LOCATION OF LANDMARK

Date:  
11 July 2013



Taken from the Northeast



Taken from Corner looking North